



TREE TRIMMING, PROTECTION AND MANAGEMENT

DTE Energy is dedicated to providing reliable, affordable electricity for every customer. While trees are a source of pride for all of us, they can also cause power outages. In fact, two-thirds of the time our customers spend without power is due to trees. Trees growing too near to power lines can also cause safety concerns.

Tree trimming is a common sense solution to prevent outages and unsafe situations from happening in the first place.

Proactive communication with you is a cornerstone of this program. We're committed to collaborating with customers to address concerns before trimming begins.

As we do this, we're encouraging safe, thoughtful tree planting. You don't have to choose between reliable electricity and beautiful trees. You can have both. The secret is to plant only low-growing trees under and near power lines. This brochure will show you how.

Trimming trees near overhead power lines is not a "do-it-yourself" job. These lines carry very high voltage. If you, or your trimming tools, come into contact with these power lines, you risk serious injury or worse. Please consult a professional tree-trimming service to trim trees near overhead power lines.

REMEMBER THE ROOT SYSTEM

When large trees are planted too close to sidewalks or driveways, proper root development is inhibited. In addition, growing roots can raise and break pavement, damaging walkways and driveways.

CONSIDER ENERGY EFFICIENCY

Strategically planting deciduous trees near south, east, and west-facing windows will provide needed shade in the summer, but let in the sun's heat during the winter. For more energy savings tips go to dteenergy.com/saveenergy.

NEED MORE INFORMATION?

For more information about tree planting or trimming, visit our web site at dteenergy.com/treecare.



150219/xxM/xxx/05-15



RIGHT TREE, RIGHT PLACE

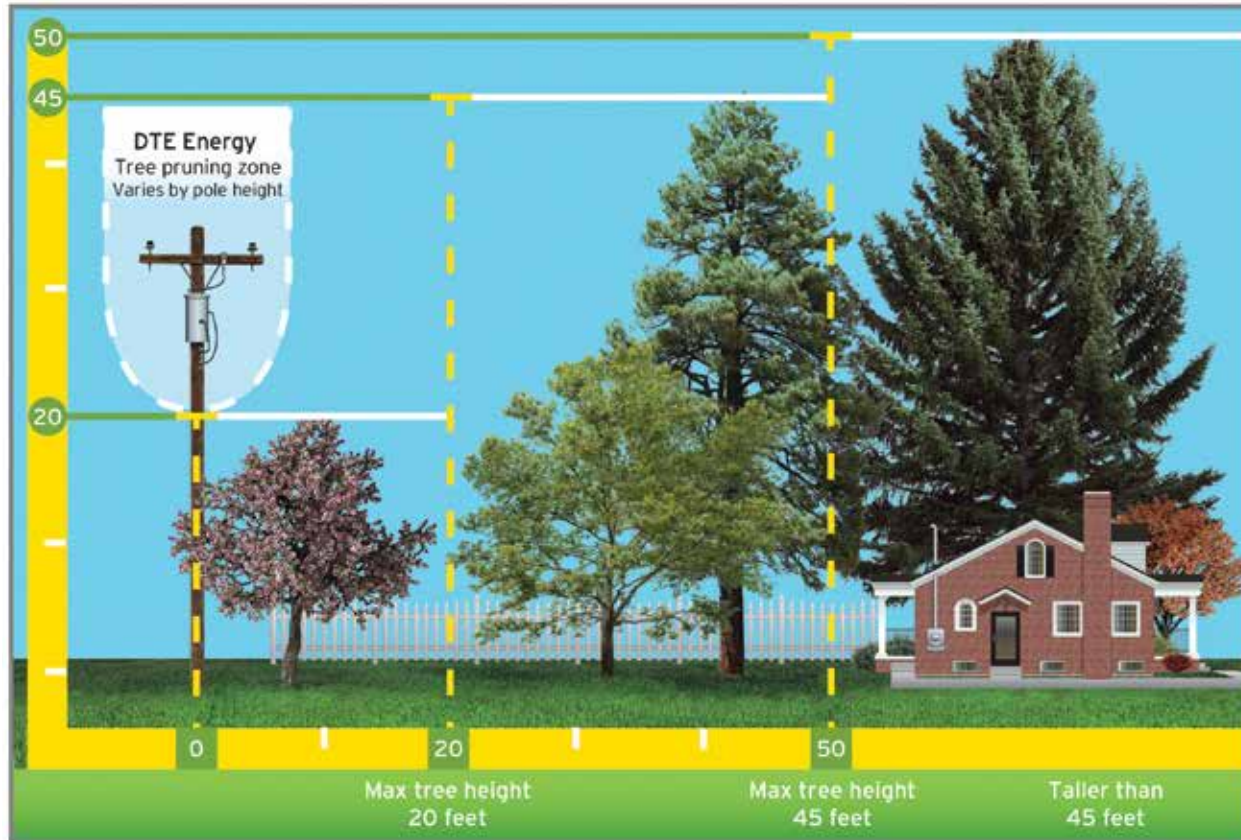
Reliable power.
Healthy trees.



PLANT THE RIGHT TREE IN THE RIGHT PLACE

You don't have to choose between having beautiful trees and reliable electricity. You can have both. The secret is to remember that trees branch outward and upward as they grow. By planting only low-growing trees near power lines, you can avoid the possibility of your tree interfering with overhead electrical power lines in the future.

The chart below shows the proper planting distances.



DIRECTLY UNDER POWER LINES TO 20 FEET AWAY

Smaller shrubs and trees
(maximum height 20 feet)

FROM 20 TO 50 FEET AWAY

Maximum height 45 feet

MORE THAN 50 FEET AWAY

Maximum heights greater than 45 feet



KEEP EQUIPMENT CLEAR

In areas where power lines are underground, it's important to consider the location of those green or grey metal boxes located on your lawn. Those boxes are your connection to the DTE Energy electrical system.

Landscaping or structures obstructing this equipment must be removed before we can restore your power or complete maintenance. This can translate into longer outages for you.

That's why shrubs, fences and other structures must be at least two feet away from the sides and back of this equipment and 8 feet away from the front (the side with the door).

BEFORE YOU PLANT

SAFETY FIRST

Make sure you know what's below before you dig. Always contact MISS DIG by calling **8-1-1** or going online to **missdig.net** at least three business days before you break ground.

Then, be sure to follow all the requirements of MISS DIG before you plant.

