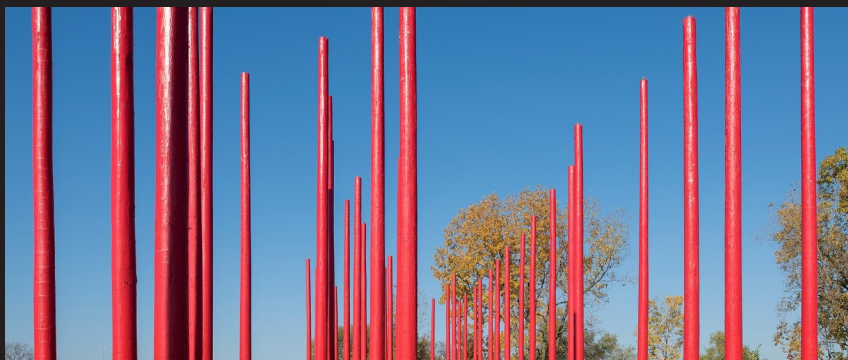
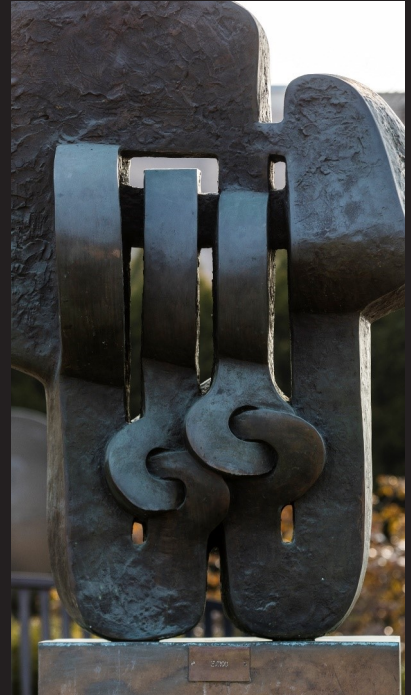




PUBLIC ARTS GUIDE

Southfield, Michigan



April 20, 2021

Southfield Public Arts Guide

April 20, 2021



Prepared by: The Southfield Public Arts Commission

Southfield Public Arts Guide

Acknowledgments

Arts Commission Members

Ronald Barry
Brian Craigo
Delores Flagg
Harvey Goldstein
Jeffrey A. Ligan
Robert McTaggart
Yvonne Milinsky
Nick Pizana
Jay Reid

Elected Officials

Kenson J. Siver, EdE, Mayor
Linnie Taylor, Council President
Michael “Ari” Mandelbaum, Council President Pro Tem
Nancy L.M. Banks
Daniel Brightwell
Lloyd Crews
Jason Hoskins
Tawnya Morris (resigned 4/20/2021)
Linnie Taylor
Sherikia Hawkins, MA, MMC, City Clerk
Irv M. Lowenberg, City Treasurer

City Staff

Frederick E. Zorn, CEcD, City Administrator
John Michrina, Deputy City Administrator
Terry Croad, AICP, ASLA, City Planner, Ex-Officio
Dave Ewick, City Librarian, Ex-Officio
Terry Fields, Director of Parks & Recreation, Ex-Officio
Noreen Kozlowski, Landscape Design Coordinator, Ex-Officio
Sarah Mulally, AICP, Assistant City Planner
Kyle Bryce, Planner I
Dawn King, City Attorney



Southfield Public Arts Guide

Table of Contents

<u>Chapter</u>	<u>Page #</u>
Title Page	2
Acknowledgments	3
Table of Contents	4
Mayor’s Greetings	5
Arts Commission Vision	6
Map of Districts	11
Artwork by District	13
City Centre.....	14
• Donald F. Fracassi Municipal Complex.....	14
• Southfield Public Library.....	29
• Lawrence Technological University.....	69
• Corporate & Private.....	81
Municipal Parks.....	94
Southfield Downtown Development Authority.....	100
Southfield Technology Corridor.....	105
SmartZone/Centrepolis.....	110
Miscellaneous Locations.....	118
Unplaced.....	130
Art Identification Plaques	138
Index of Artists	140
Appendix	143
Public Arts Commission Ordinance #1674.....	
Bylaws.....	
Public Art Requirement Ordinance #1657.....	
Donation Form.....	
Notes	



Southfield Public Arts Guide

Mayor's Greetings - Kenson J. Siver

The rise of the automobile brought drastic changes to the American landscape. The United States has evolved from a nation of coherent town squares and Main Streets to miles and miles of urban sprawl and megalopolises. Sadly, in much of the sprawl one finds a beige, monotonous sameness. Identity has been lost in this sameness of subdivisions, strip malls and suburban office centers. In this man-made landscape one could be anywhere and at the same time, nowhere.

Fear not. In the past two decades a rejection of suburban wastelands has swept the country. There has been a return to urban centers and a push in suburban communities to create places of interest that take the edge off landscapes that were designed around the automobile. The importance of "placemaking" has emerged to create distinct identities; to give residents and visitors the sense of being someplace. Public art, pedestrian amenities and landscaping are components in creating strong local identities. Art breaks blandness and sameness, stimulates the local economy and creates conversations, experiences and memories. Southfield has made great strides in creating interesting public spaces in the recent past.

Since 2015, with the redesign of Evergreen Road, Southfield has greatly improved the look of its City Centre and truly created a new, distinct identity for the area. Simultaneously, the Southfield Public Art Commission came into being followed by its fundraising arm, the Friends of Southfield Public Arts. With the support of the City Council and the city administration, the Public Art Commission took possession of the art collection from the defunct Northland Center. Thus began a major public fundraising campaign to fuel an impressive expansion of the presence of public art in the city. Since 2016, the Art Commission and the Friends of Public Arts have restored and placed ten pieces from Northland, purchased a David Barr sculpture and received three sculpture donations. Additionally, five murals have been installed, along with four corporate art installations, two works funded by Centropolis and two by the City Centre Advisory Board. And, lest we forget, we are enriched by the installations of the highly unique Red Pole Park and the Boulder Garden at Carpenter Lake. The former was funded through a Michigan Economic Development Patronicity Grant with matching funding and the latter through the generosity of a private donor.

We are extremely proud of all that has been accomplished through this significant expansion of the presence of public art over the past five years in our city. Additional installations are in the works.

May you enjoy and be moved by the art detailed in this comprehensive guide.

Sincerely yours,

Kenson J. Siver, Ed. D.

Mayor

Southfield Public Arts Guide

Arts Commission Vision



Southfield Public Arts Guide

Preface

The **Southfield Public Art Commission** was created pursuant to Ordinance No. 1630 and enacted by the Southfield City Council on September 22, 2014. After an application period and candidate interviews, The City Council and Mayor Kenson Siver, appointed nine (9) members to the commission in February 2015. Ordinance No. 1674 later expanded the Commission to eleven (11) members.

The **Southfield Public Arts Commission** consists of eleven (11) members, six (6) of whom are appointed by the City Council and the remaining five (5) are appointed by the Mayor, with confirmation by the City Council. All members of the Commission are appointed on the basis of demonstrated experience and knowledge of the arts. In addition, the Commission includes Administrative Liaisons, the Director of Planning and Planning staff, the City Librarian and the Parks & Recreation Director.

Following the closure of Southfield's historic Northland Mall, the City of Southfield acquired fourteen (14) pieces from a collection that was headed for the auction block—these pieces would have been lost to Southfield forever. The Mayor, City Council and Administration did not want that to happen and secured a loan of \$500,000.00 to purchase the art from the court-appointed receiver. Fortunately, the Commission inventoried this art and made recommendations for the display of the same to the City Council. Additionally, the Commission inventoried all art on City-owned properties including the Southfield Public Library and Donald F. Fracassi Municipal Complex, as well as the campus of Lawrence Technological University, Centrepolis, the Downtown Development Authority, and other corporate locations. The inventory included photographs and narratives of each piece, thereby developing the Southfield Public Arts Guide for public viewing.

The Southfield Public Arts Commission was established to advise the City Council on matters affecting public art within the City. The Commission recognizes that public art creates a unique sense of place and distinction, enjoyment and pride for all citizens, businesses, and visitors to the City of Southfield. The goal of the Southfield Public Arts Commission is to create a stimulating environment that reflects and enhances the City's heritage, diversity, and character through public artwork integrated in the architecture, infrastructure, and landscape of the City.

The Southfield Public Arts Commission is self-sufficient in terms of financing public art. Currently, it has developed the Southfield Public Arts Guide; a website; a plaque format for labeling, identifying and discussion of each piece; maintenance guidelines; and fundraising programs for the purchase, relocation, and placement of the art. Further, future plans also call for the creation of public art education experiences, a City art gallery, programs with public and private schools and universities to reinvigorate public interest in the arts.

The Friends of Southfield Public Arts is a 501(c)(3) non-profit organization that supports the goals of the Southfield Public Arts Commission. This organization is specifically tasked with helping to fund opportunities for the solicitation, acquisition, acceptance, restoration, and placement of art.

Southfield Public Arts Guide

Preface (continued)

The Commission has and is working on fundraising programs to finance the placement of art in the City's possession. These initiatives include crowd funding appeals and grant funding applications. The Commission has successfully engaged the City Centre Advisory Board, the Southfield Downtown Development Authority, and local businesses and corporations in matching funds and/or sponsorships.

Southfield Public Arts Guide will give structure to public arts responsible planning and implementing the Public Art Master Plan in Southfield, while setting forth a series of policy measures and processes to enable the City of Southfield to fulfill its public art objectives effectively and efficiently. The Southfield Public Arts Commission's (SPAC) vision, is to create a stimulating environment that reflects and enhances the City's heritage, diversity, and character through public artworks integrated in the architecture, infrastructure, and landscape. The **Southfield Public Arts Guide** must remain flexible and open to change as new information about existing art will be researched and additional art pieces will be acquired. Further, the **Southfield Public Arts Guide** will help encourage and stimulate citizens, developers, landowners, contractors and architects to support public displays of art for public enjoyment and aesthetics appreciation.

Further information about the Southfield Public Arts Commission is available in the City of Southfield's Ordinance numbers 1630 and 1674, and the Art Commission's by laws.

Southfield Public Arts Guide

Arts Commission Vision

A VISION FOR PUBLIC ARTS IN SOUTHFIELD

1. Public art is key to placemaking at the Donald F. Fracassi Southfield Municipal Campus, Southfield City Centre District, Northland site, and at other key locations throughout Southfield.
 - Placemaking is an economic development tool; creating a sense of place and enhancing the quality of life.
2. Public art at the Municipal Campus will help create a special sense of identity for our City.
 - An 'ArtWay' should continue to be developed with sculptures located around the front lawn loop between City Hall and Evergreen Road, and continuing into the City Centre District
3. The City acquired many pieces of Northland art, which are in good condition and should be installed in highly visible locations on the ArtWay, at the Southfield Municipal campus, or at key locations within the future Northland development.
 - The condition of several pieces of Northland art remains uncertain and should be determined. Restoration costs should be estimated.
 - As soon as possible, the Northland art should be made visible to the public. Several recommended pieces would be relatively simple and inexpensive to install.
 - Many pieces of Northland art have been installed; the Commission seeks to place the few that remain.
4. Locations for public art should be identified in the plans for the City Center and the Northland developments.
 - Additional locations for future public art installations will continue to be identified, including the Centrepolis.
5. Some City-owned sculptures, including *City of Southfield*, *Falling Icarus*, and *Two Friends* should be relocated for better public visibility.
 - *City of Southfield* has been relocated and *Falling Icarus* has been determined to remain where it is.
6. Art that the City of Southfield owns for which there is no suitable City installation location should be leased or sold with the net proceeds going to support Southfield's public arts.
7. Helping to educate the people of Southfield about the importance of art in their lives continues to be a priority of the Commission.

Phase 1:

- Help promote the importance of public art as a priority of the Commission.
- Encourage and invigorate public interest and support of public art.
- Advocate for diversity in public artworks.
- Communicate public art successes, goals, activities and programs.

Southfield Public Arts Guide

Arts Commission Vision (continued)

Phase 2:

- Advocate and support new opportunities for lifelong learning for residents of all ages.
 - Advocate for high quality art education programs tailored for Pre-K -12, university students and adults of all ages.
 - Develop community partnerships with private and public schools, non-profit organizations and local businesses.
 - Promote and solicit the Artist/Art Educator Registry database to serve as a resource for both the City and the general public.
 - Encourage Citywide school art exhibitions.
8. The Southfield public arts plan must remain flexible and open to change as new information about existing art will be researched and additional art pieces will be acquired.
 9. By adoption of the Arts Commission vision, the Southfield City Council will reinforce the mission of the Commission and the Council's support of enhancing the image of the City of Southfield through art for future generations.
 10. The Public Arts Commission is revitalizing its fund raising efforts. Without additional funding, progress toward realizing this vision will be slow.
 11. As the Northland Art continues to be installed, the Commission must look outward for additional locations for public art beyond the City Centre.
 12. The Arts Commission has a long term goal to develop a City Art Gallery to showcase local artists.
 13. Identify each piece of art through unified design and signage that at a minimum includes: name of the piece, artist, material, date of production, and background information.
 14. Use technology (i.e. PocketSites) to promote art and education.

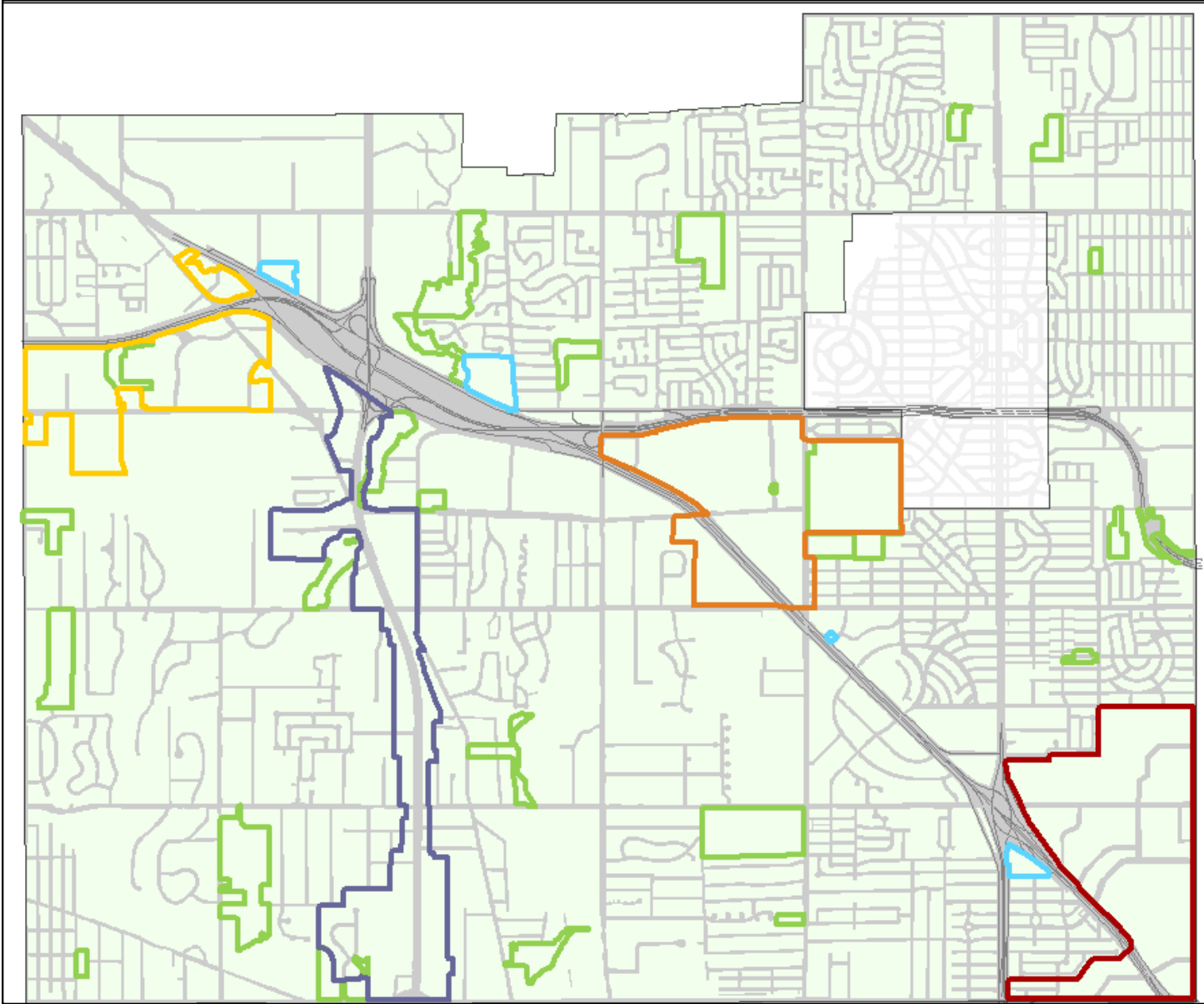
Southfield Public Arts Guide

District Map



Southfield Public Arts Guide

District Map



-  Southfield City Centre District
-  Municipal Parks
-  Downtown Development Authority District
-  Southfield Technology Corridor
-  Smart Zone A / **Centrepolis**
-  Misc. Locations



Southfield Public Arts Guide

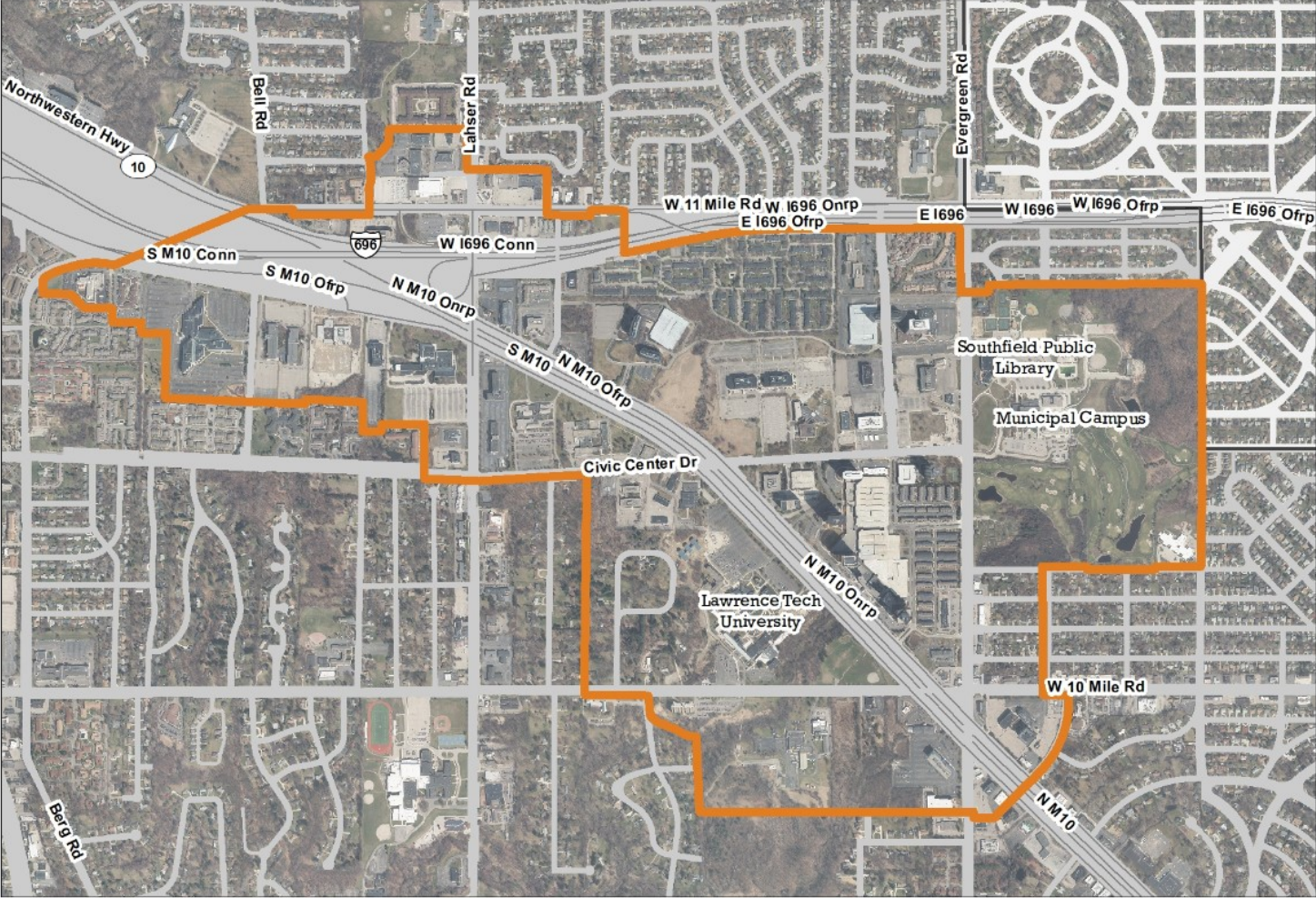
Artworks by District



Southfield Public Arts Guide

Map

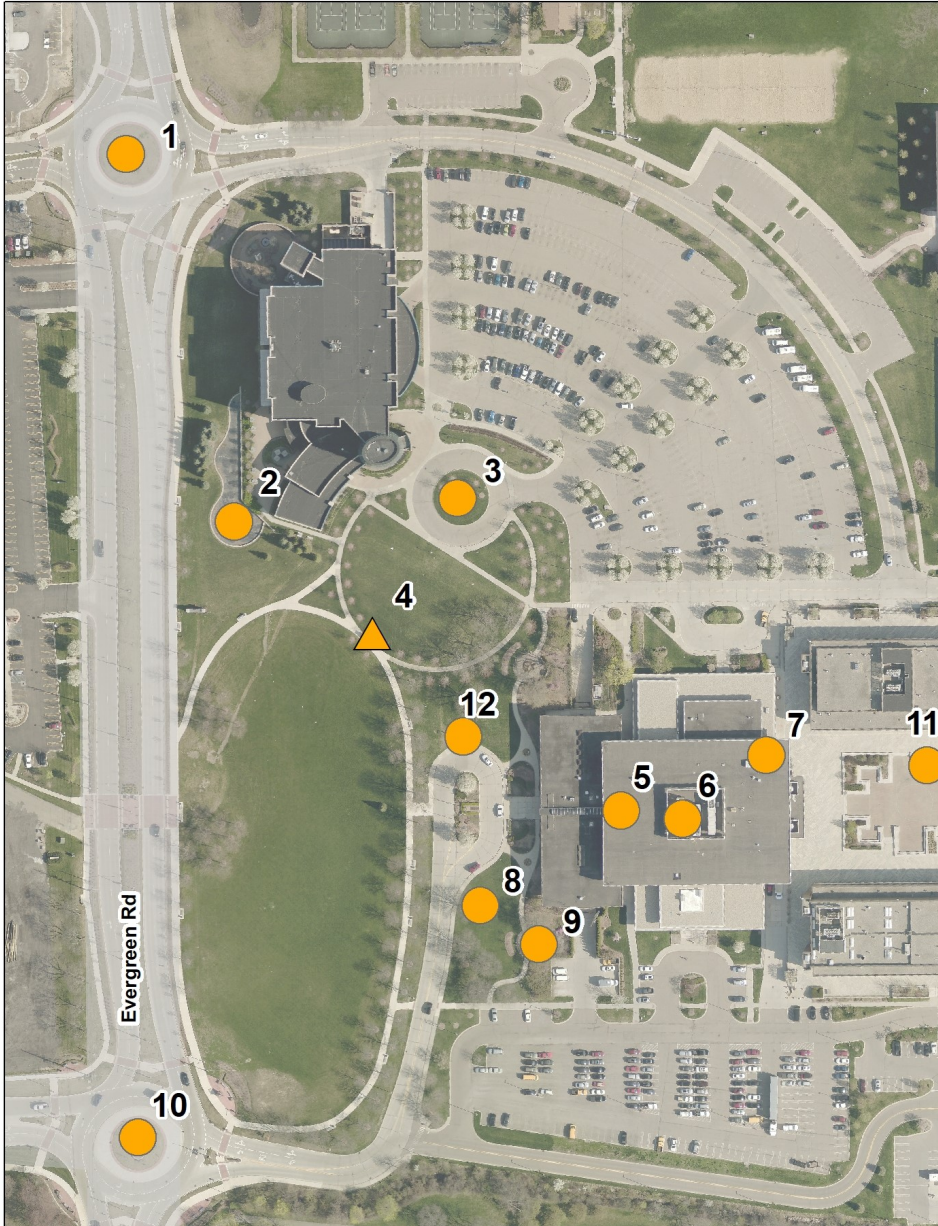
City Centre/Donald F. Fracassi Municipal Campus



Southfield Public Arts Guide

Map

City Centre/Donald F. Fracassi Municipal Campus



Legend

TYPE

- Existing
- ▲ Movable
- ★ Proposed



ID	NAME	TYPE
1	Diversity	Existing
2	Moby Dick	Existing
3	Peacock	Existing
4	SFLD Letters	Movable
5	The Gazelle	Existing
6	Motown Mural	Existing
7	Falling Icarus	Existing
8	City of Southfield	Existing
9	Prphet	Existing
10	Gratitude	Existing
11	Seated Female Figure	Existing
12	Peace Poles	Existing

Southfield Public Arts Guide

Map

City Centre/Donald F. Fracassi

Municipal Complex

The City of Southfield (Leiserowitz)

Diversity (Piet)

Falling Icarus (Hipp)

Moby Dick (McDonnell)

Gratitude (Lefkowitz)

The Leaping Gazelle (Fredericks)

Peacock Sculpture (Kraft)

“SFLD” Letters

Motown Mural (Perry)

Prophet (Etrog)

“Seated Female Figure” (Unknown)

ARTIST: Melvin Leiserowitz (1925-2015)

TITLE: City of Southfield

MATERIAL: Bethlehem Steel, USA

DIMENSIONS: Measures 18'x18'x12'

CREATED: 1983

LOCATION: City Hall Front Entrance



The piece is signed and dated “1983” by the artist and is in need of restoration. Mr. Leiserowitz came to Michigan State University in 1964. In the course of a teaching career that lasted until 1991, he influenced a generation of sculpture students. At the same time he produced a body of work that ranged in scale from very large (Orpheus at the Wharton Center for the Performing Arts) to small relief panels of a few inches, and in media from steel, Cor-Ten and stainless steel, to clay, plaster and concrete. This piece was purchased and erected in 1983 as part of the City’s 25th anniversary celebration. Created in cooperation with the Business Consortium of the Arts, this colorful artwork honors the 1,400 volunteers who have served on City Boards & Commissions throughout Southfield’s history. Received identification plaque in July 2019 and was moved from behind City Hall to the front entrance in December 2020.



Inventory Date: 5/15/15

Inventoried By: RM

ARTIST: John Piet (1946-2016)

TITLE: Diversity

MATERIAL: Steel painted primary red

DIMENSIONS: 6'x4' base, 16' tall

CREATED: 1976?

LOCATION: Evergreen Road/North roundabout



The cost of material installation was funded by the Southfield City Centre Advisory Board. The Southfield City Council unanimously approved the installation of the sculpture in the north Evergreen roundabout on September 12, 2016. The artist was a noted sculptor, retired Macomb Community College art professor and 35+ year Southfield resident. Mr. Piet and his wife donated the piece to the City and it was accepted by the City Council on July 18, 2016.



Inventory Date: 10/31/16

Inventoried By: TC

ARTIST: William Gordon Hipp

TITLE: Falling Icarus

MATERIAL: Hammered Aluminum

DIMENSIONS: 12' tall

CREATED: 1962 or 1986?

LOCATION: Northeast corner of the Southfield Pavilion



This piece hangs in the Southfield Pavilion. Mr. Hipp is the artist who created the windows for Temple Beth El. Received identification plaque July 2019.



Inventory Date: 5/14/15

Inventoried By: NK

ARTIST: Joseph Anthony McDonnell (Date of Birth: 1936)

TITLE: Moby Dick

MATERIAL: Bronze

DIMENSIONS: 8'L x 5'W x H5'6"

CREATED: 1965-66

LOCATION: Library Fountain



The artist, Mr. McDonnell, was born in 1936 in Detroit and currently lives in Seattle, Washington. He studied at University Notre Dame with post graduate work completed in Florence, Italy. He has commissioned works for Al Taubman and Bill Gates and has completed over 100 sculptures. Recipient award as artist improving environment, Dept. of Housing and Urban Development, 1972. Installed in library fountain in August 2019. The installation was accompanied by a complete rework of the fountain and its interior components to make it functioning, as well as a new walkable design with landscaping.



Inventory Date: 3/4/15

Inventoried By: NK

ARTIST: Jay Lefkowitz
TITLE: Gratitude
MATERIAL: Powder-coated steel
DIMENSIONS: 16' tall, 5'x6' base
CREATED: 1986
LOCATION: Evergreen Road/South roundabout



Jay Lefkowitz, a nationally-acclaimed Southfield sculptor, created and displayed this piece at the 4th Southfield Outdoor Sculpture Exhibition in 1986. With its soaring upward spirals and shapes, the work expresses Southfield's optimism for the future. Donated by the family of Barbara J. Davis for her service to the city and her devotion to the arts. Installed May 26, 2016.



Inventory Date: 8/19/16

Inventoried By: TC

ARTIST: Marshall Fredericks (1908-1998)

TITLE: The Leaping Gazelle

MATERIAL: Bronze

DIMENSIONS: 2'8" tall, base 4'4"

CREATED: Original created 1935

LOCATION: City Hall main lobby (original at the Barbour Memorial Fountain at Belle Isle)



Gift from Hudson's to the City of Southfield; The 'Leaping Gazelle', one of the most duplicated of Fredericks' sculptures, was the first commissioned work for which Marshall Fredericks was paid. In 1936, the sculpture won first prize in a national competition, and as a result, Fredericks became well known as a public sculptor. The original stands atop the Levi Barbour Memorial Fountain in the rose garden next to the Conservatory on Belle Isle. Since the gazelle is not native to Michigan, Fredericks made four animals that are, and placed them around the gazelle on Belle Isle. These animals are the otter, grouse, hawk and rabbit.



Inventory Date: 5/6/15

Inventoried By: NK

ARTIST: Arthur Kraft (1922-1977) & Gwen Lux (1908-1987) Collaboration
TITLE: Peacock Sculpture
MATERIAL: Welded bronze rodstock and enameled copper panels; glass orb (missing)
DIMENSIONS: 12'1 x 8'h
CREATED: 1954
LOCATION: Library Entrance Circle



Commissioned by Architect Victor Gruen for J.L. Hudson & Company in 1954. Installed in Library entrance circle on September 20, 2018.



Inventory Date: 6/8/15

Inventoried By: NK

ARTIST: Signs by Crannie & Terry Croad, City Planner

TITLE: “SFLD” Letters

MATERIAL: Aluminum painted international orange with black base

DIMENSIONS:

CREATED: 2016

LOCATION: Movable for special events



The “SFLD” letters debuted at the Eat-to-the-Beat event on June 9, 2016. It is labeled “#southfieldspirit” and encourages placemaking and interactivity. The piece was also used at the Summer Soulstice run event on June 18, 2016 and will be moved to other city-sponsored events. Today it serves as a “placemaking” element on the front lawn loop at the Donald F. Fracassi Municipal Campus.



Inventory Date: 6/8/16

Inventoried By: TC

ARTIST: Clifton Perry
TITLE: Motown Mural
MATERIAL: Airbrushed mural on two wall boards
DIMENSIONS: 45'x10'
CREATED: 2013 - 2014
LOCATION: Southfield Pavilion



The artist, Clifton Perry, completed the mural between September 2013 and February 2014. The mural depicts Motown acts (left to right) Rick James, Tammi Terrell, Gladys Knight & the Pips, Marvin Gaye, Smokey Robinson, Esther Gordy, Barry Gordy, the Jackson 5, The Supremes, The Four Tops, The Temptations, and Stevie Wonder. Installed in Southfield Pavilion.



Inventory Date: 3/4/15

Inventoried By: NK

ARTIST: Sorel Etrog (1933-2014)

TITLE: Prophet

MATERIAL: Bronze casting with copper base

DIMENSIONS: 4'3"L x 1'4"W x 5'8"H

CREATED: 1968

LOCATION: South side garden of Southfield City Hall



Originally installed at the Genessee Valley Center in Flint, Michigan, *Prophet* was later erected at Northland Mall. The modern sculpture consists of curved bronze-casted forms with negative spacing throughout. Installed March 13, 2018 in side garden of City Hall along Artway.



Inventory Date: 3/20/2018

Inventoried By: Kyle Bryce

ARTIST: Unknown
TITLE: Unknown (Seated Female Figure)
MATERIAL: Bronze
DIMENSIONS: 3' x 4''w x 3.5'h
CREATED: Unknown
LOCATION: City Hall Plaza



Originally installed at the Northland Theater, this unknown piece was part of the Northland Art Collection. Installed February 1, 2021 at City Hall Plaza.



Inventory Date: 2/23/2021

Inventoried By: Kyle Bryce

ARTIST: May Peace Prevail on Earth International/Johnson Sign Co.

TITLE: Peace Poles

MATERIAL: Bronze

DIMENSIONS: 8" x 8" base, 8'6"h

CREATED: 2020

LOCATION: City Hall Front Entrance



These three poles display the phrase “May Peace Prevail on Earth” in 24 different languages. Installed September 2020.



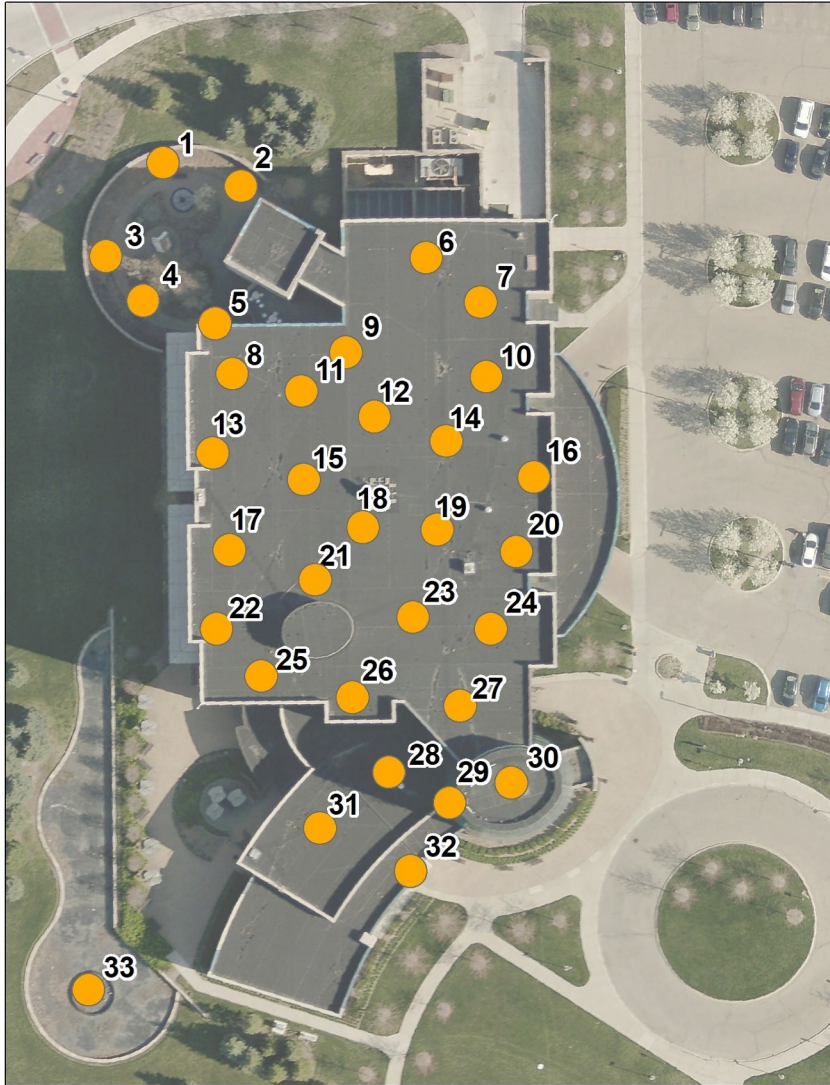
Inventory Date: 2/23/2021

Inventoried By: Kyle Bryce

Southfield Public Arts Guide

Map



City Centre/Southfield Public Library

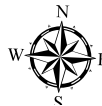


ID	NAME	TYPE
1	Butterfly Bench	Existing
2	Words of Wisdom	Existing
3	Season of the Imagination	Existing
4	Alice in Wonderland	Existing
5	Journey of the Imagination	Existing
6	Still Waters Reflections	Existing
7	Southfield 50th Anniversary Quilt	Existing
8	A Plethora of Fish	Existing
9	Brown Honey in Broom-wheat Tea	Existing
10	Bedtime Stories	Existing
11	Les Fleurs de Babylone	Existing
12	Transformation	Existing
13	Oh the Places You'll Go	Existing
14	Cat in the Hat	Existing
15	In the Beginning	Existing
16	Singing Cats	Existing
17	Two Bears	Existing
18	Fox in Socks	Existing
19	Sophie and Rose	Existing
20	Book Quit	Existing
21	Unorthodox Taxidermies	Existing
22	Oh the Stuff You Will Learn	Existing
23	Miniature Bridge Model	Existing
24	Wind Blowing	Existing
25	These Hands	Existing
26	A Potter's Touch	Existing
27	Unknown (Johnson) x 3	Existing
28	Mark Twain Bench	Existing
29	Green Glass	Existing
30	Boy and Bear	Existing
31	The Voyage Begins	Existing
32	MLK Bust	Existing
33	Moby Dick	Existing

Legend

TYPE

-  Existing
-  Proposed



Southfield Public Arts Guide

Map

City Centre/Southfield Public Library

Alice in Wonderland	Southfield 50th Anniversary Quilt (Library Staff)
Bedtime Stories (Dyer)	Still Waters Reflection (Harding)
Book Quilt (Library Staff)	These Hands (Collier)
Boy and Bear (Fredericks)	Transformation (Kelman)
Brown Honey in Broomwheat Tea (Cooper)	Two Bears (Fredericks)
Butterfly Bench	Unorthodox Taxidermies (Seuss)
Cat in the Hat (McKnight)	The Voyage Begins (Venti)
Les Fleurs de Babylone (Saville)	Wind Blowing (Pinkney)
Fox in Socks (Seuss)	Words of Wisdom (Price)
Green Glass	Untitled (Johnson)
In the Beginning (Collier)	Untitled (Johnson)
Journey of the Imagination (Price)	Untitled (Johnson)
Mark Twain Bench (Price)	
Martin Luther King Jr. Bust (Spearman)	
Miniature Bridge Model	
Oh, the Places You'll Go (Seuss)	
Oh, the Stuff You Will Learn (Seuss)	
A Plethora of Fish (Seuss)	
A Potter's Touch (Collier)	
Season of the Imagination Tiles (Eisenhardt)	
Singing Cats (Seuss)	
Sophie and Rose (Halperin)	

ARTIST:

TITLE: Alice in Wonderland

MATERIAL:

DIMENSIONS:

CREATED:

LOCATION: Southfield Public Library



Gift of Friends of the Southfield Public Library



Inventory Date: 6/1/15

Inventoried By: NK

ARTIST: Jane Dyer
TITLE: Bedtime Stories
MATERIAL:
DIMENSIONS:
CREATED:
LOCATION: Southfield Public Library



Jane Dyer (born 1949) is an American author and illustrator of more than fifty books, including Amy Krouse Rosenthal's *Cookies* series and Jeanne Birdsall's *Lucky and Squash*. Dyer grew up in New Jersey and Pennsylvania. She used to teach, write, and illustrate textbooks before she began illustrating children's books full-time. She was encouraged to begin illustrating by her students and their parents. Most of Dyer's work in children books illustrates family or home scenes. Dyer is a twin and often illustrates books with her daughter, Brooke Dyer. Donated by Carla Moss.



Inventory Date: 6/8/15

Inventoried By: NK

ARTIST: Staff of the Southfield Public Library

TITLE: Book Quilt

MATERIAL: Cotton

DIMENSIONS:

CREATED:

LOCATION: Southfield Public Library



CITY CENTRE / LIBRARY



Inventory Date: 6/8/15

Inventoried By: NK

ARTIST: Marshall M. Fredericks (1908-1998)

TITLE: Boy and Bear

MATERIAL: Indiana limestone & polished bronze

DIMENSIONS: 6'6"l x 3'6"w x 7'6"h

CREATED:

LOCATION: Southfield Public Library rotunda; Formerly located at Northland Mall adjacent to the interior entrance to Macy's



Marshall Frederick's philosophy was to bring happiness to others in the way of his art. He designed Boy and Bear to be a welcoming figure for children: "The bear has a gentle smile and lowered down snout for kids to rub..." —Marshall Fredericks

The original plaster model of the bear was created in Mr. Fredericks' studio in Royal Oak. The final sculpture was cut from Indiana limestone by stonecutters from Meier Cut Stone. The sculpture took 3 years to complete.



Inventory Date: 5/19/16

Inventoried By: TC

ARTIST: Floyd Cooper
TITLE: Brown Honey in Broomwheat Tea
MATERIAL:
DIMENSIONS:
CREATED:
LOCATION: Southfield Public Library



Floyd Cooper (born January 8, 1956) is an American illustrator of children's books. He is based in Easton, Pennsylvania and has worked with Jane Yolen, Nikki Grimes, Eloise Greenfield, Howard Bryant, Joyce Carol Thomas and many more. He graduated from the University of Oklahoma. Gift of Friends of the Southfield Public Library.



Inventory Date: 6/8/15

Inventoried By: NK

ARTIST:
TITLE: Butterfly Bench
MATERIAL:
DIMENSIONS:
CREATED:
LOCATION: Southfield Public Library



Gift of Friends of the Southfield Public Library



Inventory Date: 6/8/15

Inventoried By: NK

ARTIST: David McKnight (Emerald City Designs)

TITLE: Cat in the Hat

MATERIAL: Mixed-Media, soft sculpture

DIMENSIONS:

CREATED:

LOCATION: Southfield Public Library (Children's Department, 1st Floor)



Inventory Date: 6/8/15

Inventoried By: NK

ARTIST: Joy Saville
TITLE: Les Fleurs de Babylone
MATERIAL: Cloth
DIMENSIONS: 70" w x 50" h
CREATED: 2004
LOCATION: Southfield Public Library (Admin Offices)



CITY CENTRE / LIBRARY



Inventory Date: 6/1/15

Inventoried By: NK

ARTIST: Dr. Seuss (aka Theodor Seuss Geisel) (1904-1991)

TITLE: Fox in Socks

MATERIAL: Print

DIMENSIONS:

CREATED:

LOCATION: Southfield Public Library



Gift of Friends of the Southfield Public Library



Inventory Date: 6/8/15

Inventoried By: NK

ARTIST: Unknown
TITLE: Green Glass
MATERIAL: Glass
DIMENSIONS:
CREATED:
LOCATION: Southfield Public Library (Admin Offices)



Inventory Date: 6/1/15

Inventoried By: NK

ARTIST: Bryan Collier (Date of Birth: 1967)

TITLE: In the Beginning

MATERIAL: Watercolor

DIMENSIONS:

CREATED:

LOCATION: Southfield Public Library



An African American writer and illustrator known best for illustrating children's books. **Bryan Collier** won both the Coretta Scott King Award, as illustrator, and the Ezra Jack Keats New Illustrator Award for Uptown, the first book he both wrote and illustrated. This illustration, mixed media on paper, by Bryan Collier for the book "Dave the Potter: Artist, Poet, Slave" by Laban Carrick Hill, is one of a hundred pieces of art included in "Our Voice: Celebrating the Coretta Scott King Illustrator Awards." Gift of Friends of the Southfield Public Library in memory of James Scharret.



Inventory Date: 6/8/15

Inventoried By: NK

ARTIST: Gary Lee Price (Date of Birth: 1955)

TITLE: Journey of the Imagination

MATERIAL: Bronze

DIMENSIONS: 7' x 5' x 2'8"

CREATED:

LOCATION: Southfield Public Library



Gary Lee Price born 1955 has created over the year sculptures that was very therapeutic for him. Each piece represents the freedom and the joy for life that so many of us lose. His bronzes are sculptures with meaning, sculpture to “lift the human spirit” – sculpture to inspire – this is the essence of Gary’s works and his life’s journey – *to lift, to inspire*. Gary has been sculpting professionally for over 30 years and has supported a successful fine art business and foundry during those years. Gary resides in Mapleton Utah with his wife Leesa Clark Price. He s his success to His mother who instilled in Gary the ability to express himself through art. Gary is a member of the National Sculpture Society.



Inventory Date: 6/8/15

Inventoried By: NK

ARTIST: Gary Lee Price (Date of Birth: 1955)

TITLE: Mark Twain Bench

MATERIAL: Bronze

DIMENSIONS:

CREATED:

LOCATION: Southfield Public Library



Gift of Friends of the Southfield Public Library



Inventory Date: 6/8/15

Inventoried By: NK

ARTIST: James Spearman
TITLE: Martin Luther King Jr. Bust
MATERIAL: Bronze
DIMENSIONS:
CREATED:
LOCATION: Southfield Public Library



Commissioned by the MLK Task Force for Southfield Residents. An original sculpture of King's likeness in clay was created based on photos. Three plaster pieces were then made from the clay. The piece was unveiled on January 20, 2015 at the annual MLK Peace Walk and Celebration in the Southfield Pavilion.

Spearman, who now lives in Columbia, Tennessee, is the former owner of an art gallery in Lathrup Village called Dell Gallery. The bust, Spearman said, is a re-creation of one he re-created several years ago.



Inventory Date: 6/8/15

Inventoried By: NK

ARTIST: Unknown
TITLE: Mackinac Bridge
MATERIAL: Painted metal
DIMENSIONS: 6'x8"x3'
CREATED:
LOCATION: Southfield Public Library



Placed in Southfield Public Library September 2019.



Inventory Date:

Inventoried By:

ARTIST: Dr. Seuss (aka Theodor Seuss Geisel) (1904-1991)

TITLE: Oh, the Places You'll Go

MATERIAL: Print

DIMENSIONS:

CREATED:

LOCATION: Southfield Public Library



CITY CENTRE / LIBRARY

Gift of Friends of the Southfield Public Library



Inventory Date: 6/8/15

Inventoried By: NK

ARTIST: Dr. Seuss (aka Theodor Seuss Geisel) (1904-1991)

TITLE: Oh, the Stuff You Will Learn

MATERIAL: Prints

DIMENSIONS:

CREATED:

LOCATION: Southfield Public Library



Gift of Friends of the Southfield Public Library



Inventory Date: 6/8/15

Inventoried By: NK

ARTIST: Dr. Seuss (aka Theodor Seuss Geisel) (1904-1991)

TITLE: A Plethora of Fish

MATERIAL: Print

DIMENSIONS:

CREATED:

LOCATION: Southfield Public Library



Gift of Friends of the Southfield Public Library



Inventory Date: 6/8/15

Inventoried By: NK

ARTIST: Bryan Collier (Date of Birth: 1967)

TITLE: A Potter's Touch

MATERIAL: Mixed Media on Paper

DIMENSIONS: 13.5" x 20"

CREATED:

LOCATION: Southfield Public Library



Gift of Friends of the Southfield Public Library in memory of James Scharret. See page 39 for artist information.



Inventory Date: 6/8/15

Inventoried By: NK

ARTIST: Laura Eisenhardt (Date of Birth: 1961)

TITLE: Season of the Imagination

MATERIAL: Tiles

DIMENSIONS:

CREATED:

LOCATION: Southfield Public Library



CITY CENTRE / LIBRARY



Inventory Date: 6/8/15

Inventoried By: NK

ARTIST: Dr. Seuss (aka Theodor Seuss Geisel) (1904-1991)

TITLE: Singing Cats

MATERIAL: Print

DIMENSIONS:

CREATED:

LOCATION: Southfield Public Library



CITY CENTRE / LIBRARY

Gift of Friends of the Southfield Public Library



Inventory Date: 6/8/15

Inventoried By: NK

ARTIST: Wendy Anderson Halperin (Date of Birth: 1952)

TITLE: Sophie and Rose

MATERIAL:

DIMENSIONS:

CREATED:

LOCATION: Southfield Public Library



CITY CENTRE / LIBRARY



Inventory Date: 6/8/15

Inventoried By: NK

ARTIST: Staff of the Southfield Public Library

TITLE: Southfield 50th Anniversary Quilt

MATERIAL: Cotton

DIMENSIONS:

CREATED: 2008

LOCATION: Southfield Public Library (Near History Room)



Commissioned by the Friends of the Southfield Public Library



Inventory Date: 6/8/15

Inventoried By: NK

ARTIST: Tim Harding
TITLE: Still Waters Reflections
MATERIAL: Cloth
DIMENSIONS:
CREATED: 2006
LOCATION: Southfield Public Library (Admin Offices)



CITY CENTRE / LIBRARY

Consists of 3 fabric panels each measuring 60" by 60"



Inventory Date: 6/8/15

Inventoried By: NK

ARTIST: Bryan Collier (Date of Birth: 1967)

TITLE: These Hands

MATERIAL: Mixed Media on Paper

DIMENSIONS:

CREATED:

LOCATION: Southfield Public Library



Gift of Friends of the Southfield Public Library in memory of James Scharret. See page 39 for additional information.



Inventory Date: 6/8/15

Inventoried By: NK

ARTIST: Janet Kelman (Date of Birth: 1948)
TITLE: Transformation
MATERIAL: Glass
DIMENSIONS:
CREATED: 2006
LOCATION: Southfield Public Library (Admin Offices)



Janet Kelman has created sculptural and architectural glass for over forty years. She studied chemistry in college and fell in love with glass, aesthetically as well as the physical ways in which the medium can be manipulated. She built a studio and produced beautifully blown and etched perfume bottles that were sold in galleries across the country. In 1985, Janet began creating architectural glass: sandblasted doors, windows, and mirrors in her distinct, delicate style. Recent commissions include mosaics, donor walls, sculptural wall pieces, and lighting.



Inventory Date: 6/1/15

Inventoried By: NK

ARTIST: Marshall M. Fredericks (1908-1998)

TITLE: Two Bears

MATERIAL: Bronze

DIMENSIONS:

CREATED: 1962

LOCATION: Southfield Public Library



Two Bears was originally created in 1962 for Lincoln Square, Urbana, Illinois. A large and small bear sit back-to-back in quiet contemplation. In nature, these two animals are enemies, however, **Marshall Fredericks** portrays the two in a gentle humanistic way, stressing tolerance. The bears are markedly different in their ears and noses and the small bear displays Fredericks' trademark teardrop-kneecap sculpting style. Other sculptures that display this characteristic are *The Thinker*, *Lion and Mouse*, and the *Male Baboon* and *Female Baboon* sculptures. Gift of Friends of the Southfield Public Library.



Inventory Date: 6/8/15

Inventoried By: NK

ARTIST: Dr. Seuss (aka Theodor Seuss Geisel) (1904-1991)

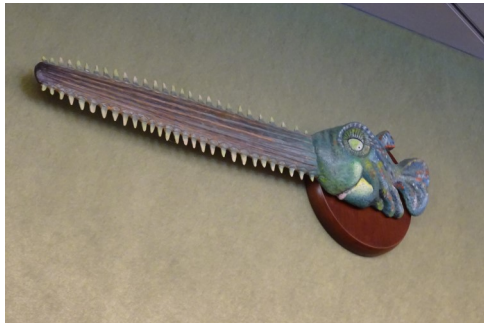
TITLE: Unorthodox Taxidermies (Various)

MATERIAL:

DIMENSIONS:

CREATED:

LOCATION: Southfield Public Library (Children's 1st Floor)



Sawfish



Gimlet Fish



Sea Going Dilemma Fish



Turtle-Necked Sea Turtle

Donated by the Friends of the Library



Inventory Date: 6/8/15

Inventoried By: NK

ARTIST: Dr. Seuss (aka Theodor Seuss Geisel) (1904-1991)

TITLE: Unorthodox Taxidermies (Various)

MATERIAL:

DIMENSIONS:

CREATED:

LOCATION: Southfield Public Library (Children's 1st Floor)



Sludge Tarpon



Carbonic Walrus



Flaming Herring



Powerless Puffer

Donated by the Friends of the Library



Inventory Date: 6/8/15

Inventoried By: NK

ARTIST: Dr. Seuss (aka Theodor Seuss Geisel) (1904-1991)

TITLE: Unorthodox Taxidermies (Various)

MATERIAL:

DIMENSIONS:

CREATED:

LOCATION: Southfield Public Library (Children's 1st Floor)



Anthony Drexel Goldfarb



Mulberry Street Unicorn



Semi-Normal Green Lidded



Two Horned Drouberhannis

Donated by the Friends of the Library



Inventory Date: 6/8/15

Inventoried By: NK

ARTIST: Dr. Seuss (aka Theodor Seuss Geisel) (1904-1991)

TITLE: Unorthodox Taxidermies (Various)

MATERIAL:

DIMENSIONS:

CREATED:

LOCATION: Southfield Public Library (Children's 1st Floor)



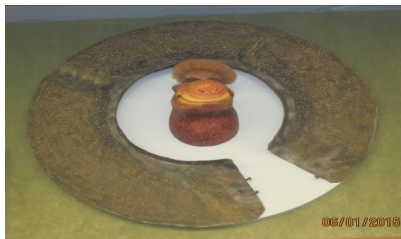
Googoo-Eyed
Tasmanian Wolghast



Blue-Green Abelard



Andulovian Grackler



Tufted Gustard

Donated by the Friends of the Library



Inventory Date: 6/8/15

Inventoried By: NK

ARTIST: Anthony Bacon Venti (Date of Birth: 1950)

TITLE: The Voyage Begins

MATERIAL:

DIMENSIONS:

CREATED:

LOCATION: Southfield Public Library



The son of a Manhattan advertising photographer, **Anthony Venti** grew up in a carriage house studio where pictures, deadlines, and art directors were part of life. Broadway, movies and animation inspired him to create pictures that draw people from across the room. Venti is a member of The Society of Illustrators and his work can be seen in many of his one-man shows, including the Palette & chisel Club in Chicago (1988) and his Romancing the Sea exhibit at the Penobscot Marine Museum (1996). Mystic Seaport and The Farnsworth Art Museum also carry his best-selling posters, 'Harmony,' 'The Voyage Begins.'



Inventory Date: 6/8/15

Inventoried By: NK

ARTIST: Jerry Pinkney (Date of Birth: 1939)

TITLE: Wind Blowing

MATERIAL: Watercolor

DIMENSIONS:

CREATED:

LOCATION: Southfield Public Library



Jerry Pinkney born 1939, has been illustrating children's books since 1964. He has illustrated over one hundred titles and is the first solo African-American to win the prestigious Caldecott Medal for picture book illustration. He also has five Caldecott Honors, five Coretta Scott King Awards, four Coretta Scott King Honors, five New York Times Best Illustrated Awards, and a Boston Globe-Horn Book Award. Pinkney's works address diverse themes and are usually done in watercolors. Gift of Friends of the Southfield Public Library.



Inventory Date: 6/8/15

Inventoried By: NK

ARTIST: Gary Lee Price (Date of Birth: 1955)

TITLE: Words of Wisdom

MATERIAL: Bronze

DIMENSIONS:

CREATED:

LOCATION: Southfield Public Library Children's Garden



Gift from T. Neil & Mildred L. McGregor. See page 40 for artist information.



Inventory Date: 6/8/15

Inventoried By: NK

ARTIST: Edmond Johnson (1927-2011)

TITLE: Unknown

MATERIAL: Watercolor

DIMENSIONS:

CREATED:

LOCATION: Southfield Public Library (Admin Conference Room)



Always a gifted artist, Edmond Johnson left the automobile industry in the late 70s to pursue painting. His work has been on exhibit at the Gallery at Mystic Seaport and the Mariners Museum as well as in galleries and shows from New England to the Chesapeake Bay area. Ed was an artist member of the in Boston and the American Society of Marine Artists. He holds over 35 awards including the prestigious Yankee Magazine Sagendorph Memorial Award from the Copley Society as well as awards from the the Mystic Seaport Art Festival. Cod Art Association and 4 major awards from the Mystic Seaport Art Festival.



Inventory Date: 6/1/15

Inventoried By: NK

ARTIST: Edmond Johnson (1927-2011)

TITLE: Unknown

MATERIAL: Watercolor

DIMENSIONS:

CREATED:

LOCATION: Southfield Public Library (Admin Conference Room)



See page 63 for artist information.



Inventory Date: 6/1/15

Inventoried By: NK

ARTIST: Edmond Johnson (1927-2011)

TITLE: Unknown

MATERIAL: Watercolor

DIMENSIONS:

CREATED:

LOCATION: Southfield Public Library (Admin Conference Room)



See page 63 for artist information.



Inventory Date: 6/1/15

Inventoried By: NK

ARTIST: Elwyn Bush (1931-2016)
TITLE: Malcolm X bust
MATERIAL: Ceramic
DIMENSIONS:
CREATED:
LOCATION: Southfield Public Library



Donated by Elwyn Bush. Plaque reads, "Malcolm X, Ceramic bust, donated by Elwyn Bush, 1931-2016."



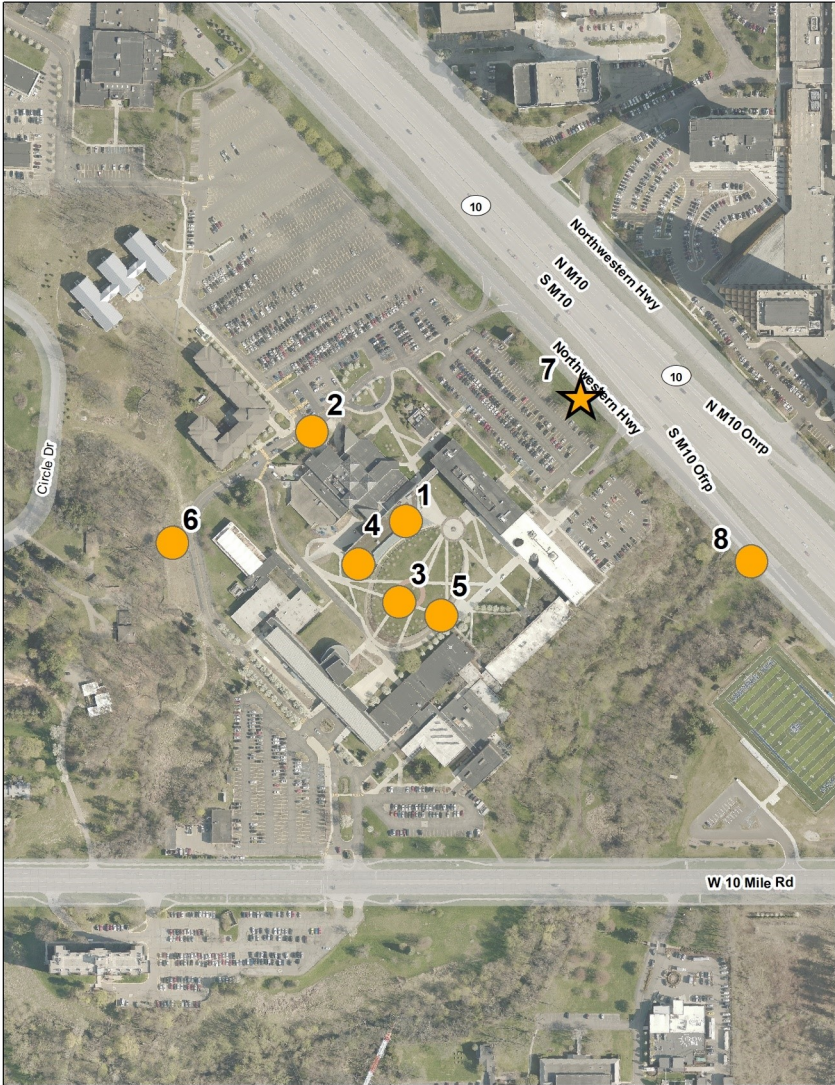
Inventory Date: 12/8/16

Inventoried By: DE

Southfield Public Arts Guide

Map

City Centre/Lawrence Tech University



Legend

- TYPE
- Existing
 - Not Placed
 - Proposed

ID	NAME	TYPE
1	Blossom	Existing
2	Henry Ford Statue	Existing
3	Ockham's Wedge	Existing
4	Readings	Existing
5	Unnamed (Tau Beta Pi)	Existing
6	Engine-uity	Existing
7	Tapestry of a Community	Proposed
8	LTU Barrier Wall Murals	Existing



Southfield Public Arts Guide

Map

City Centre/Lawrence Tech University

Blossom (Golkar)

Henry Ford, Father of Industrial Education (Kramer)

Ockham's Wedge (Pepper)

Readings (Golkar)

Unknown (Tau Beta Pi)

Engine-uity (Gruizenga)

Tapestry of a Community (Massey)

LTU Barrier Wall Murals (Cook, Nicolín, and Valdez)

ARTIST: Michael "Mino" Duffy Kramer (Date of Birth: 1947)

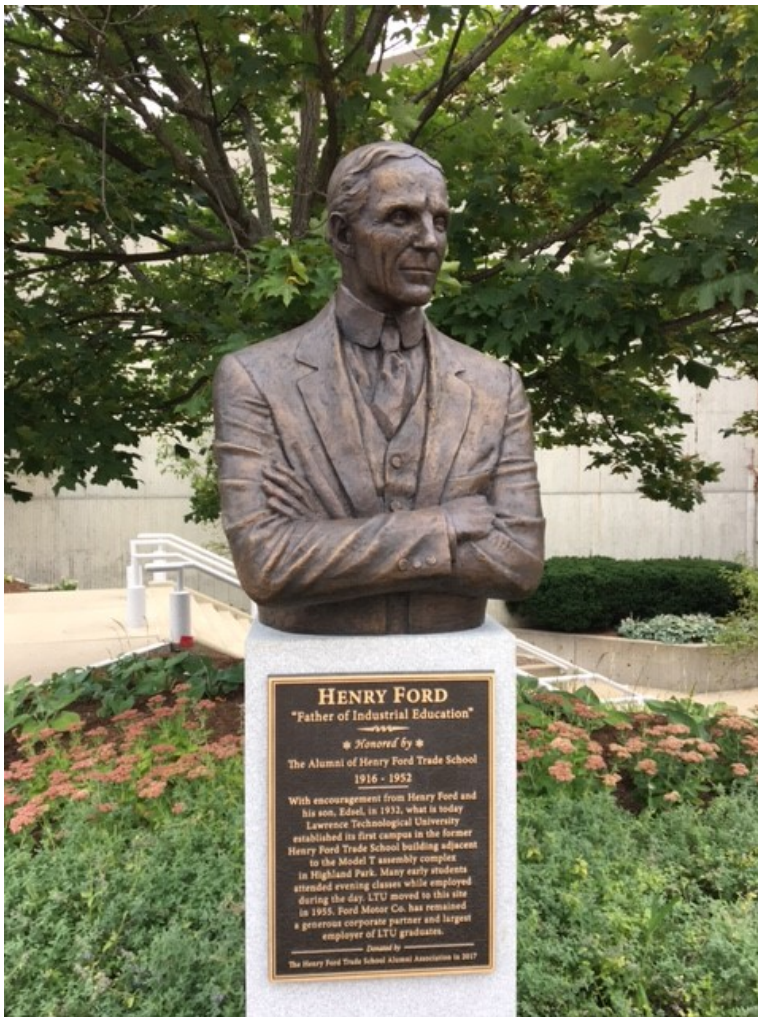
TITLE: Henry Ford, Father of Industrial Education

MATERIAL: Bronze

DIMENSIONS:

CREATED: 2017

LOCATION: Lawrence Technological University



The sculpture is a gift of the Henry Ford Trade School Alumni Association. Ford opened a trade school in 1916 that would eventually enroll nearly 3,000 students a year. LTU and the Ford alumni group have a long history dating back to Lawrence Tech's creation. The April 25, 2017 unveiling took place with LTU President Virinder Moudgil, HFTS Alumni Association President George Banda, Edsel Ford II, Sculptor Mino Kramer, and LTU Board of Trustees Chairman Douglas Ebert, Chairman.



Inventory Date: 8/18/17

Inventoried By: TC

ARTIST: Douglas Gruizenga
TITLE: Engine-uity
MATERIAL: Welded Aluminum
DIMENSIONS: 9'H x 12'W x 14'L
CREATED: Installed 2020
LOCATION: Lawrence Technological University



This sculpture neatly fits in with Lawrence Technological University's theme of engineering and ingenuity. Part of LTU's Public Art Requirement for their multipurpose sports stadium, this bold sculpture proudly adorns their campus.



Inventory Date:

Inventoried By: KB

ARTIST: Beverly Pepper (Date of Birth: 1922)

TITLE: Ockham's Wedge

MATERIAL: Welded steel

DIMENSIONS: 24' tall, 3,000 lbs

CREATED:

LOCATION: Lawrence Technological University Quadrangle



Donated by A. Alfred Taubman, April 22, 2009. The sculpture was named for William of Ockham, a 14th-century English philosopher associated with Ockham's Razor, a principle of scientific inquiry that postulates that the simplest explanation is probably the best. Ms. Pepper was born in New York City in 1922, won several awards from 1982-2013 and has commissioned pieces in Italy, the U.S., Japan, Israel, France, Sweden, Spain, and Australia.



Inventory Date: 5/19/15

Inventoried By: PL

ARTIST: Ali Golkar (Date of Birth: 1948)

TITLE: Blossom

MATERIAL: Serigraph on wove paper

DIMENSIONS:

CREATED:

LOCATION: Lawrence Technological University: A. Alfred Taubman Student Services Building



Born in 1948 in the historic city of Isfahan, Iran. His deep passion for the arts became apparent at an early age, beginning with an interest in the classical Persian style for which he won numerous awards at the national level in painting. As a student of fine arts and architecture in Tehran, Iran, Golkar made the decision to move with his wife to the United States in 1974 where he has been living ever since.

While pursuing a formal education at the Southern California Institute of Architecture in Los Angeles (Sci-Arc), Golkar continued to indulge in his love for painting and exhibited his work throughout California. His career in painting proved so fruitful from the start that he decided, upon graduating from Sci-Arc, to work full-time as an artist. Commissioned by Park West Gallery



Inventory Date: 5/19/15

Inventoried By: PL

ARTIST: Ali Golkar (Date of Birth: 1948)

TITLE: Readings

MATERIAL: Serigraph on wove paper

DIMENSIONS:

CREATED:

LOCATION: Lawrence Technological University: A. Alfred Taubman Student Services Building



Commissioned by Park West Gallery. See artist information on page 72.



Inventory Date: 5/19/15

Inventoried By: PL

ARTIST: Unknown

TITLE: Unknown

MATERIAL: Concrete and metal

DIMENSIONS:

CREATED: 1981

LOCATION: Lawrence Technological University Quadrangle



Commissioned by Tau Beta Pi—Michigan ETA Chapter; plaque reads, “Tau Beta Pi/
Michigan ETA Chapter/School of Engineering/Lawrence Institute of Technology/Dedicated
to its alumni members/April 11, 1981”.



Inventory Date: 5/19/15

Inventoried By: PL

ARTIST: Dustin Cook
TITLE: LTU Barrier Mural 1
MATERIAL: Paint on concrete
DIMENSIONS: 5' x 30'
CREATED: 2021
LOCATION: Lawrence Technological University Pathway



One of three linear murals painted on the inside of the barrier wall along the Lawrence Technological University pathway. Painted by local Detroit artist Dustin Cook, this abstract form creates a dramatic splash of color along the wall. Installed in May 2021.



Inventory Date: 5/19/15

Inventoried By: PL

ARTIST: Sheila Nicolin

TITLE: LTU Barrier Mural 2

MATERIAL: Paint on concrete

DIMENSIONS: 5' x 30'

CREATED: 2021

LOCATION: Lawrence Technological University Pathway



One of three linear murals painted on the inside of the barrier wall along the Lawrence Technological University pathway. Painted by local Detroit artist Sheila Nicolin, this abstract form creates a dramatic splash of color along the wall. Installed in May 2021.



Inventory Date: 5/19/15

Inventoried By: PL

ARTIST: Dino Valdez

TITLE: LTU Barrier Mural 3

MATERIAL: Paint on concrete

DIMENSIONS: 5' x 30'

CREATED: 2021

LOCATION: Lawrence Technological University Pathway



One of three linear murals painted on the inside of the barrier wall along the Lawrence Technological University pathway. Painted by local Detroit artist Dino Valdez, this abstract form creates a dramatic splash of color along the wall. Installed in May 2021.



Inventory Date: 5/19/15

Inventoried By: PL

ARTIST: Hubert Massey

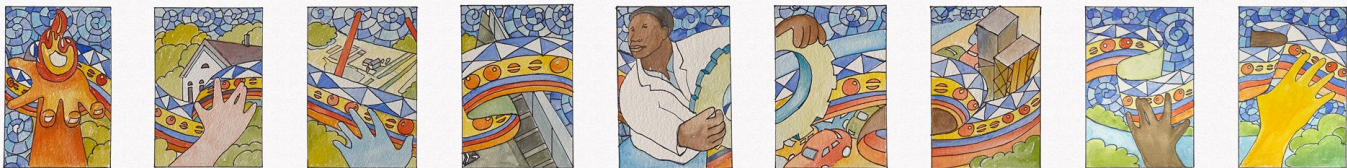
TITLE: Tapestry of a Community

MATERIAL: Glazed clay tile mosaic on concrete triptychs

DIMENSIONS: 8' h x 5'10" w each

CREATED: 2021

LOCATION: Lawrence Technological University Pathway



This piece consists of a community-inspired design created by Detroit artist Hubert Massey. The design tells the story of the City of Southfield, and will be assembled by local volunteers. Dr. Massey held two virtual Town Hall meetings with Southfield community stakeholders to create the vision for the final design. The design will be constructed in a series of concrete triptychs along the Lawrence Technological University Pathway. The first two sets of triptychs are to be completed in 2021.



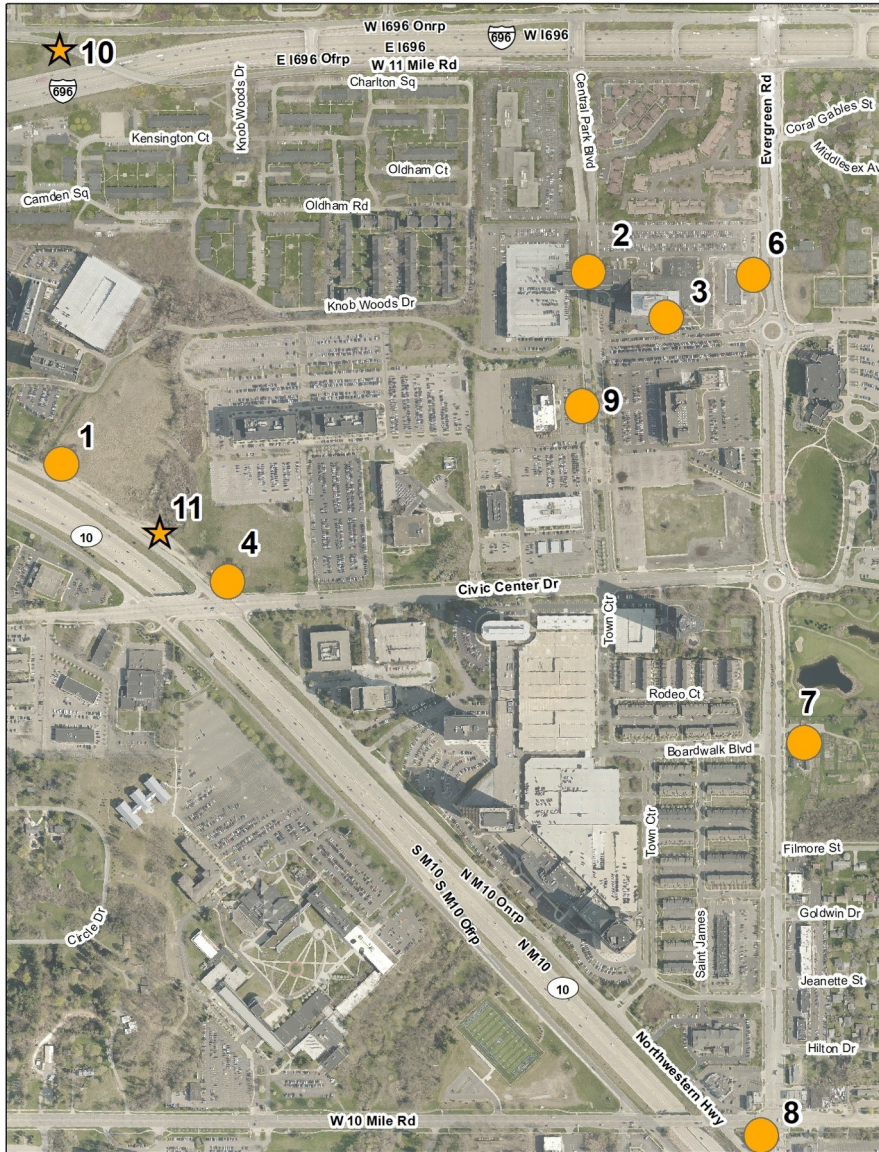
Inventory Date: 5/19/15

Inventoried By: PL

Southfield Public Arts Guide

Map

City Centre/Corporate & Public



ID	NAME	TYPE
1	Red Pole Park	Existing
2	Citigroup	Existing
3	Helmsley	Existing
4	Clarience Technologies Plaza	Existing
5	The Crowd	Existing
6	Singularity	Existing
7	Pioneer Family II	Existing
8	Yin Yang	Existing
9	Striving	Existing
10	Obelisk	Proposed
11	Endeavor	Proposed

Legend

TYPE

● Existing

★ Proposed

Southfield Public Arts Guide

Map

City Centre/Corporate & Public

Corporate

Travelers Tower, 26555 Evergreen Rd

Citigroup (Arrechea)

Helmsley (Arrechea)

Truck-Lite, 20600 Civic Center Rd

Clarience Technologies Plaza

Travelers Outlot, 26559 Evergreen Rd

Singularity (Czerska)

2000 Town Center

The Crowd (Pomodoro)

Public

Northwestern Hwy Service Drive (ROW)

Red Pole Park

Pioneer Family II (Drenters)

Yin Yang (Barr)

Central Park Boulevard Plaza

Striving

Endeavor

ARTIST: Alexandre Arrechea (Date of Birth: 1970)

TITLE: Citigroup

MATERIAL: Foam, polyurethane, steel

DIMENSIONS: 192 1/2" x 60 5/8" x 12 3/4"

CREATED: 2013

LOCATION: Travelers Tower North Lawn



Originally part of a sculpture installation series in New York City called *No Limits*. Each piece is a different take on an iconic building from NYC and were previously on display on Park Avenue in NYC. On loan since August 15, 2016, the Citigroup sculpture can be rotated by hand on its spinning-top base by passersby. It is a depiction of the Citigroup Center office tower in New York City, located in midtown Manhattan. The art is meant to create a dialogue with the public that raises questions of control, power, surveillance and one's role within these categories. Through iconic architectural buildings and urban spaces, the artist plays and entices the viewer to explore this concept. The artist was born in Trinidad, Cuba but lives and works in Miami, Florida.



Inventory Date: 8/11/16

Inventoried By: TC

ARTIST: Alexandre Arrechea (Date of Birth: 1970)

TITLE: Helmsley

MATERIAL: Painted steel

DIMENSIONS: 14'9" x 14'5 5/8" x 2'7 3/8"

CREATED: 2013

LOCATION: Travelers Tower South Lawn



Originally part of a sculpture installation series in New York City called *No Limits*. Each piece is a different take on an iconic building from NYC. On loan since August 15, 2016, the Helmsley Building sculpture pays homage to the 35-story building but is equally recognizable as a snake eating its own tail. Per the artist, "It's like a city that devours itself. That has always been my first vision of New York." The viaduct slot at the bottom of the building, as a mouth, eats the pretty cupola atop the building and in doing so creates a circle. The artist was born in Trinidad, Cuba but lives and works in Miami, Florida.



Inventory Date: 8/11/16

Inventoried By: TC

ARTIST: Andreas Drenters (date of birth: 1937)

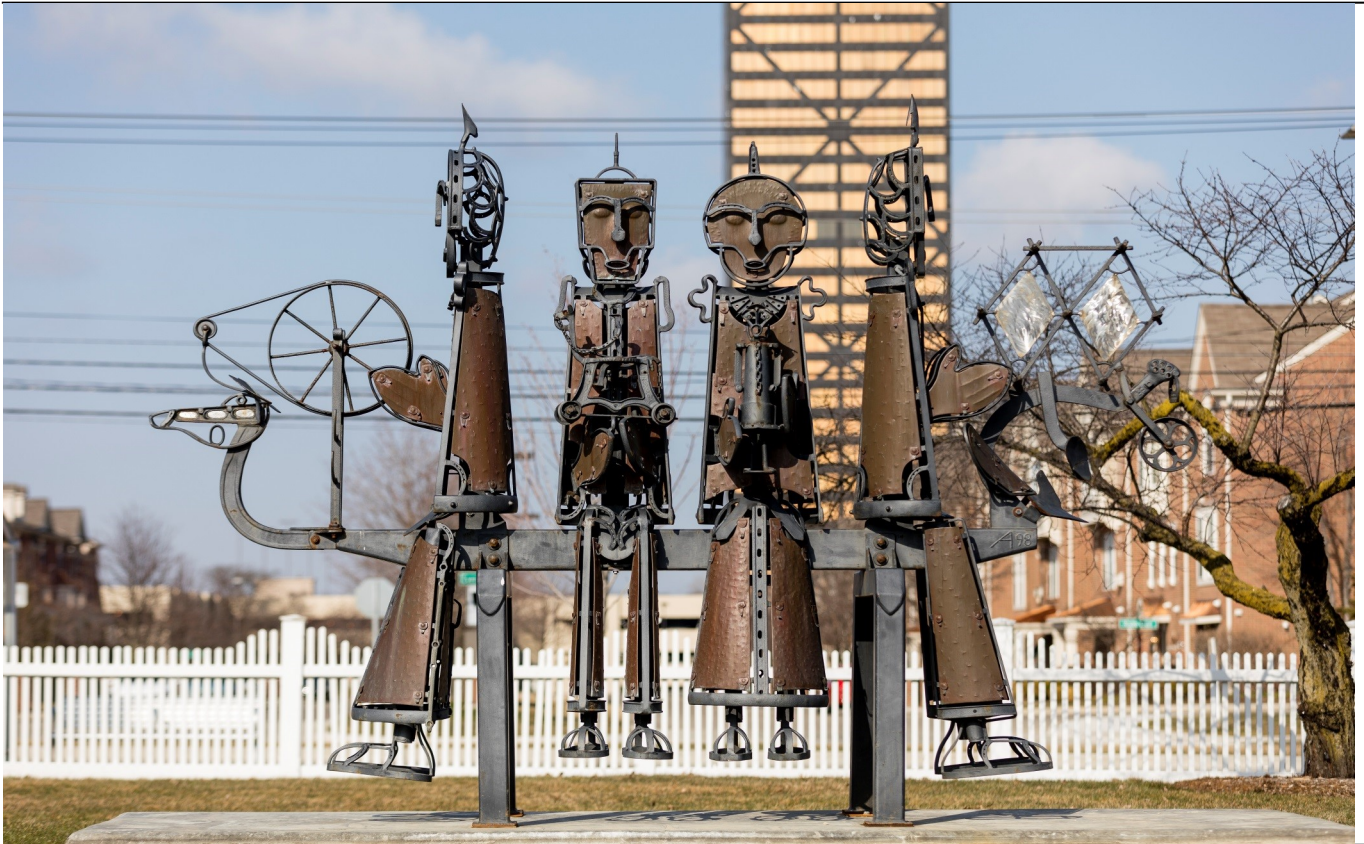
TITLE: Pioneer Family II

MATERIAL: copper, steel, polished steel

DIMENSIONS: 12' 1 x 3' w x 9' h

CREATED: 1998

LOCATION: Mary Thompson Farm



Pioneer Family II was donated by Mark Diem to the City in November 2017. The artist, Andreas Drenters, lived on a farm in The Netherlands during the Second World War. His father was an inventor and blacksmith, and Drenters used the materials found in his father's shop to create toys as a child. During the 1950s, the Drenters family immigrated to Canada continuing to farm. Drenters was drawn to the design of agriculture machinery which inspired him to continue to create. In the 1960s, his found metal objects were recognized for having cultural significance. The original Pioneer Family (1988), on which Pioneer Family II was based, was a gift of the Jocius family in memory of Andreas Drenter's brother. Yosef Drenters, also a well-known sculptor, died suddenly in 1983 at the age of 52. Before his death, he had plans to create Pioneer Family. Andreas combined the remnants of the unfinished piece with scrap metal and repurposed farming tools and machinery. *Pioneer Family* was unveiled to the public on April 28, 1990, the same day as the opening reception for an exhibition honoring his brother, *Yosef Drenters: A Lifetime of Drawing*. Mr. Drenters currently resides in Rockwood, Ontario, Canada.



Inventory Date:

Inventoried By: TC

ARTIST: HED

TITLE: Red Pole Park (Future)

MATERIAL: Painted utility poles and concrete discs

DIMENSIONS: Average 9.6" diameter x 35' high above ground; 10' x 10' grid

CREATED: 2018

LOCATION: Northwestern Hwy



After a successful crowdfunding campaign and a matching grant through the Michigan Economic Development Corporation, Red Pole Park was completed in Summer 2018. The site contains 65 poles, a bike repair station, two rest areas, and an interpretive panel. Decorative blue lights were attached to the tops of (40) poles to provide a nighttime element.



Inventory Date: 5/5/17

Inventoried By: TC

ARTIST: Kinga Czerska (Date of Birth: 1973)

TITLE: Singularity

MATERIAL: Paint

DIMENSIONS: 100'w x 12' h

CREATED: 2017

LOCATION: Travelers Outlot Retail Center (west/rear façade), 26563-26587 Evergreen Rd



The artist currently lives in Seattle, WA. From the artist: “The world is composed of an expansive number of connections, nuances and details, that my mind constantly processes. If you can imagine flattening everything in front of you into one plane and analyzing its contents you will be able to see what I see. As the world restructures by shifting and undulating I try to capture the brief moment when it is stable just before another shift occurs.

I devote my time to the study of different patterns and structures found in architecture, engineering, animal kingdom, stars and galaxies, the human body and psyche. I am amazed at the intricacies of the natural and manmade environments and the phenomenal detail that allows for each piece to fit creating a graceful, precise, elegant and complex puzzle.

My work is an attempt at understanding how it all fits, what holds it together and most importantly how one simple change affects everything as "elements" interlace, change, shift, and reconfigure.”



Inventory Date: 10/17/17

Inventoried By: TC

ARTIST: Gia Pomodoro (1930-2002)
TITLE: The Crowd 1963-64
MATERIAL: Granite & polished bronze
DIMENSIONS: 8'x2'x6'4"
CREATED: 1983
LOCATION: 2000 Town Center Lobby



Created in the 1960s, the artist described the piece as “surfaces under tension”, referring to societal conflict of the time. It was not one of the six works of art originally commissioned by Hudson's. Another is located at the Palm Springs Art Museum. *The Crowd* was restored, given a new base and installed inside the 2000 Town Center lobby, where it is currently being leased.



Inventory Date: 3/4/15

Inventoried By: NK

ARTIST: Unknown

TITLE: Clarience Technologies Plaza

MATERIAL: Various

DIMENSIONS:

CREATED: 2020

LOCATION: Civic Center Dr. and NW HWY



Part of Clarience Technologies new headquarters, this corner pedestrian plaza serves as their Public Art Requirement.



Inventory Date:

Inventoried By: KB

ARTIST: David Barr

TITLE: Yin Yang

MATERIAL: Steel

DIMENSIONS:

CREATED:

LOCATION: 10 Mile/Northwestern/Evergreen traffic triangle



Created by Michigan artist David Barr in his noteworthy steel sculptural design, this piece is evocative of the principals of movement and balance from which it gets its name. After private ownership for several decades, this piece was purchased by the Friends of Southfield Public Art. Installed in 2020.



Inventory Date: 4/20/21

Inventoried By: KB

ARTIST: Signgraphix
TITLE: Striving
MATERIAL: Aluminum
DIMENSIONS: 5' x 5' cluster, tallest piece is 12' h
CREATED: 2021
LOCATION: Central Park Plaza



Designed by the Southfield Planning Department and Signgraphix, "Striving" evokes the germination of the seven band of colors (in pastel) of the rainbow striving to its ultimate arching form that we all are familiar with. It also represents the eternal hope & desire to come out of the darkness of the COVID-19 pandemic. *Striving* was installed May 2021.



Inventory Date: 4/20/21

Inventoried By: KB

ARTIST: Signgraphix

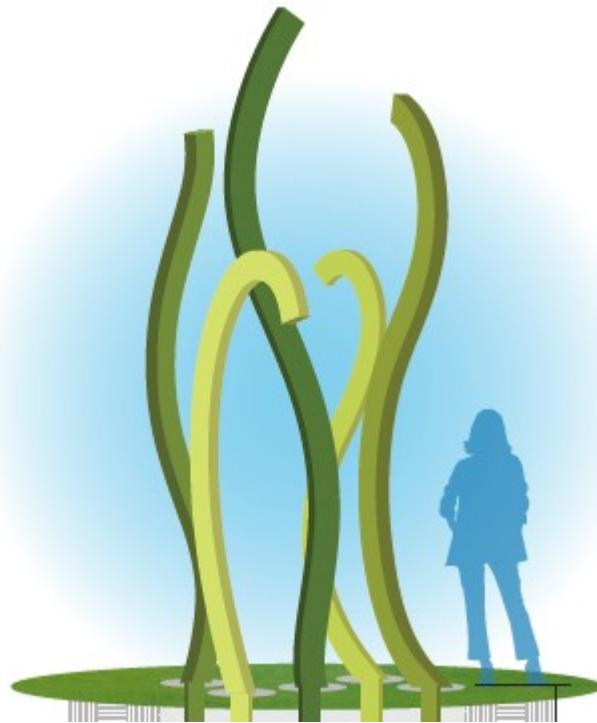
TITLE: Endeavor

MATERIAL: Aluminum

DIMENSIONS: 5' x 5' cluster, tallest piece is 12' h

CREATED: 2021

LOCATION: Northwestern Highway



Designed by the Southfield Planning Department and Signgraphix, "Endeavor" evokes spring-like growth and renewal. To be installed in 2021.



Inventory Date: 4/20/21

Inventoried By: KB

ARTIST: Hubert Massey

TITLE: TBA

MATERIAL: Concrete

DIMENSIONS: 3'11" x 3'11" base, 14' h

CREATED: 2021

LOCATION: 11 Mile Rd. and Arlington Dr. median



Designed by Hubert Massey with community stakeholder input. To be installed in 2021.



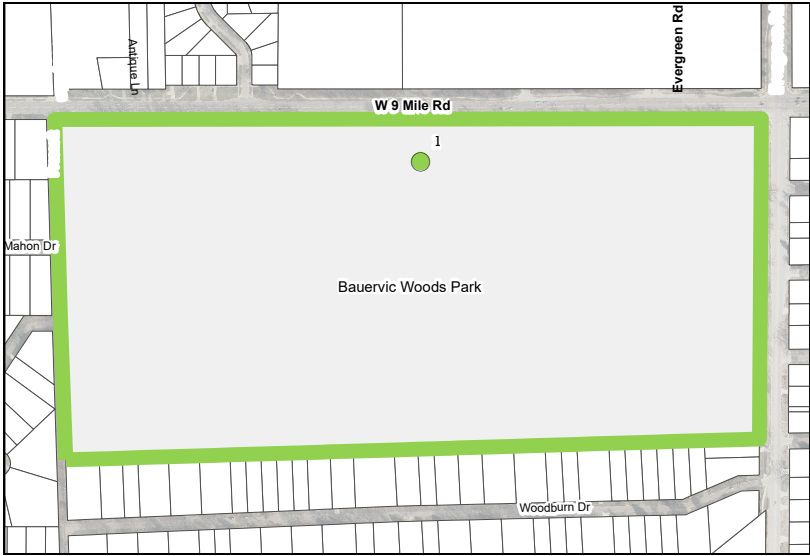
Inventory Date: 4/20/21

Inventoried By: KB

Southfield Public Arts Guide

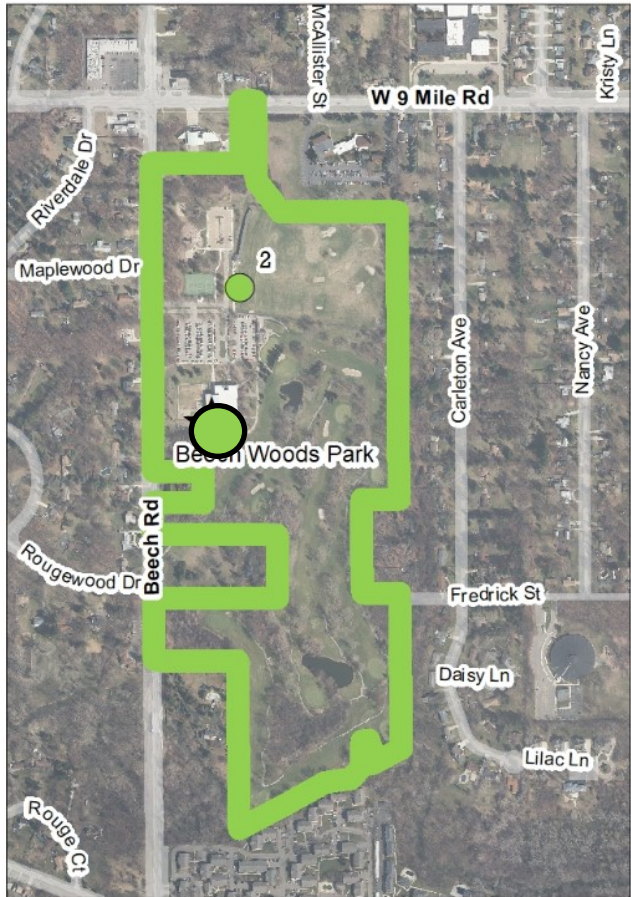
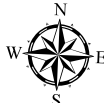
Map

Municipal Parks



Legend

- Existing
- ★ Proposed



ID	NAME	TYPE
1	Two Friends	Existing
2	Untitled	Existing
3	Great Lakes	Existing

Southfield Public Arts Guide

Map

Municipal Parks

Bauervic Woods

Two Friends (Reid)

Beech Woods

Untitled (Youngman)

The Great Lakes (Saarinen)

Carpenter Lake

The Boulders at Carpenter Lake (Lasser)

ARTIST: Marshall Lasser (Date of Birth: 1947)
TITLE: The Boulders at Carpenter Lake
MATERIAL: Granite, iron ore, hematite, and basalt
DIMENSIONS: TBD
CREATED: 2017
LOCATION: Carpenter Lake Nature Preserve



Granite, iron ore, hematite and basalt from the western Upper Peninsula; glacial erratics from American Aggregate mine, Oxford, MI; granite from Kingston and Huntsville, Ontario. Two granite boulders will be around 40 tons each, the largest of the glacial erratics from Oakland County.

Plants: a variety of unusual conifers.



Inventory Date:

Inventoried By: TC

ARTIST: Karl Reid

TITLE: Two Friends

MATERIAL: Wood & steel

DIMENSIONS: 13'x11'x8'

CREATED:

LOCATION: Bauervic Park



Karl Reid received a BFA in Fine Art from Wayne State University in 1981. He lived and worked in his hometown of Detroit until moving to Chicago in 1986. There, he pursued a career as a draftsman for various architectural woodworking firms while continuing to make sculpture, design, and build furniture, and participate in exhibitions. Artist statement: "My artwork is an expression of the enjoyment of color and compositional relationships. I strive for beauty through these elements." This piece was purchased by the City in July 1986.



Inventory Date: 5/18/15

Inventoried By: NK

ARTIST: W. Robert Youngman (Date of Birth: 1927)

TITLE: Untitled

MATERIAL: Cement/concrete

DIMENSIONS: 6' tall

CREATED:

LOCATION: Beech Woods Park



Donated to the City by Louis Redstone. Recommendation: To be installed on the proposed ArtWay that circles between City Hall and Evergreen Road.



Inventory Date: 5/18/15

Inventoried By: NK

ARTIST: Lilian Louisa Swann Saarinen (1912-1995)

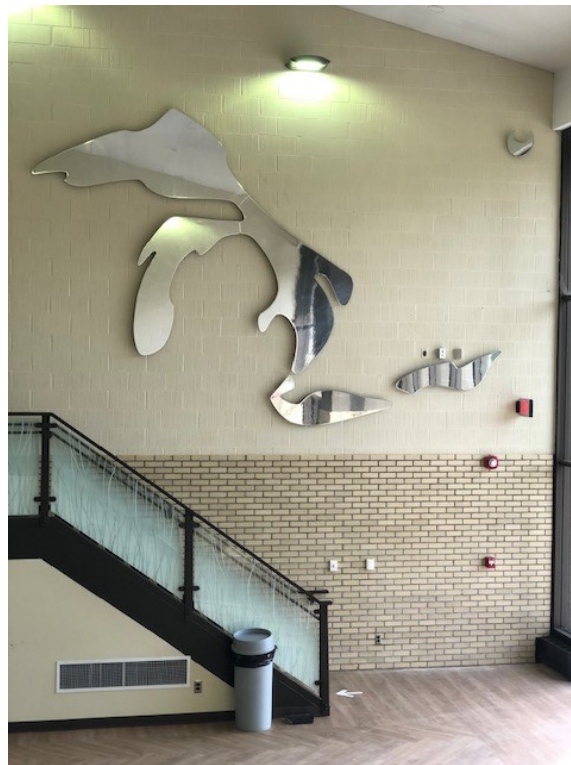
TITLE: The Great Lakes Water Hole (circa 1954)

MATERIAL: Terra cotta, ceramic, stylized ceramic contour metal, & stainless steel

DIMENSIONS: 20'x15'

CREATED:

LOCATION: Beech Woods Recreation Center



H15' x W20' outlining the State of Michigan & Great Lakes; Lilian Saarinen (1912-1995) was a sculptor and artist born in New York City who studied at Cranbrook, and lived most of her adult life in Massachusetts. From 1939-1951, she was married to Architect Eero Saarinen and worked on the design of the St. Louis Arch with him. The smaller figurines added around the ceramic map sculpture are stylized ceramic contour metal meant to depict the State of Michigan's natural beauty. Damage: 4 of 9 pieces are damaged. Recommendation: to be installed on the western wall of the ice arena without ceramic pieces. Ceramic piece can be displayed as stand alone sculptures. Installed in Beech Woods Recreation Center in 2020.



Inventory Date: 3/4/15

Inventoried By: NK

Southfield Public Arts Guide

Map

Southfield Downtown Development Authority



Legend

- Existing
- ★ Proposed

ID	NAME	TYPE
1	Baseline Obelisk	Existing
2	Laughing Elephant	Proposed
3	Greenfield Murals	Existing
4	Iter Vitae	Proposed



Southfield Public Arts Guide

Map

Southfield Downtown Development Authority

Eight Mile Rd Frontage

Coasting the Baseline Obelisk (Barr)

Iter Vitae (Makohon)

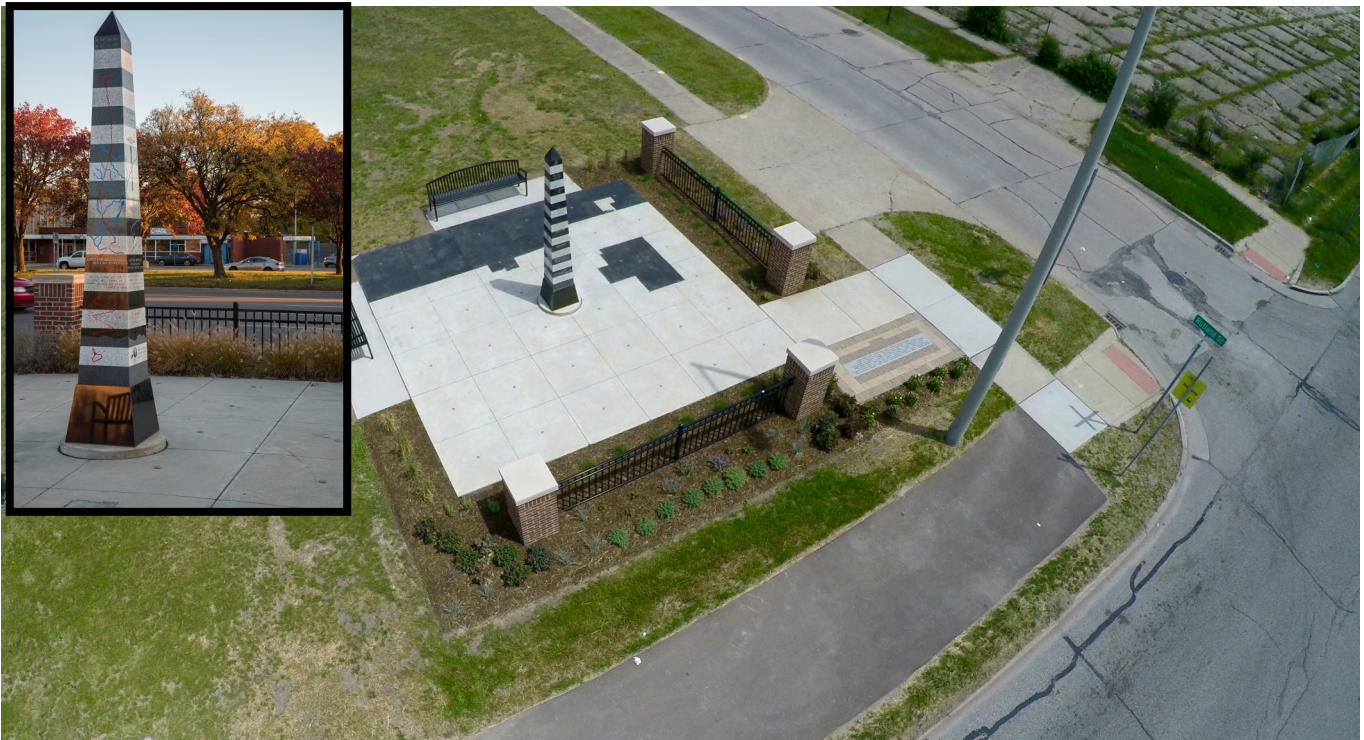
Greenfield Frontage

Greenfield Murals (Unknown)

Future Northland Development

Laughing Elephant (Kraft)

ARTIST: David Barr (1939-2015)
TITLE: Coasting the Baseline Obelisk & Plaza
MATERIAL: Concrete, marble, & granite
DIMENSIONS: 10' tall, 18" high black granite base
CREATED: 2016
LOCATION: Northwest corner of Eight Mile Rd and Rutland Ave



The Coasting the Baseline project is a series of commemorative markers located on Eight Mile or Baseline Road. Each marker is a 10' tall obelisk describing the significance of surveying in the settlement of Michigan as the foundation for property ownership in the state. Michigan was the first state in the nation to be fully, successfully surveyed using modern surveying practices. This obelisk will join those of neighboring communities (Northville, Farmington Hills, & Novi) along Eight Mile Road. The obelisk, designed by world-renowned sculptor David Barr, includes engraved references to early surveying tools, land ownership, and elements of Southfield's history, and are made from alternating blocks of black and white granite. The obelisk shape was chosen because it was commonly used by early surveyors to mark significant geographical points. The obelisk was erected through public donations and corporate sponsors. The plaza is laid out to replicate the original 36 square mile grid of Southfield Township with section markers identified.



Inventory Date: 6/16/16

Inventoried By: TC

ARTIST: Various
TITLE: Greenfield Murals
MATERIAL: Various
DIMENSIONS:
CREATED: August 2019
LOCATION: Arby's Alley at Greenfield and 9 Mile



Part of Advance Building's new Arby's construction, a series of abstract murals adorns this pedestrian walkway.



Inventory Date:

Inventoried By: KB

ARTIST: Patrizia Makohon
TITLE: Iter Vitae
MATERIAL: Welded Metal
DIMENSIONS: 8' H x 8' W
CREATED: 2011
LOCATION: 20830 Rutland



This metal sculpture, evocative of a family, is to be installed as part of 20830 Rutland's Public Art Requirement. Created by Detroit artist Patrizia Makohon in 2021.



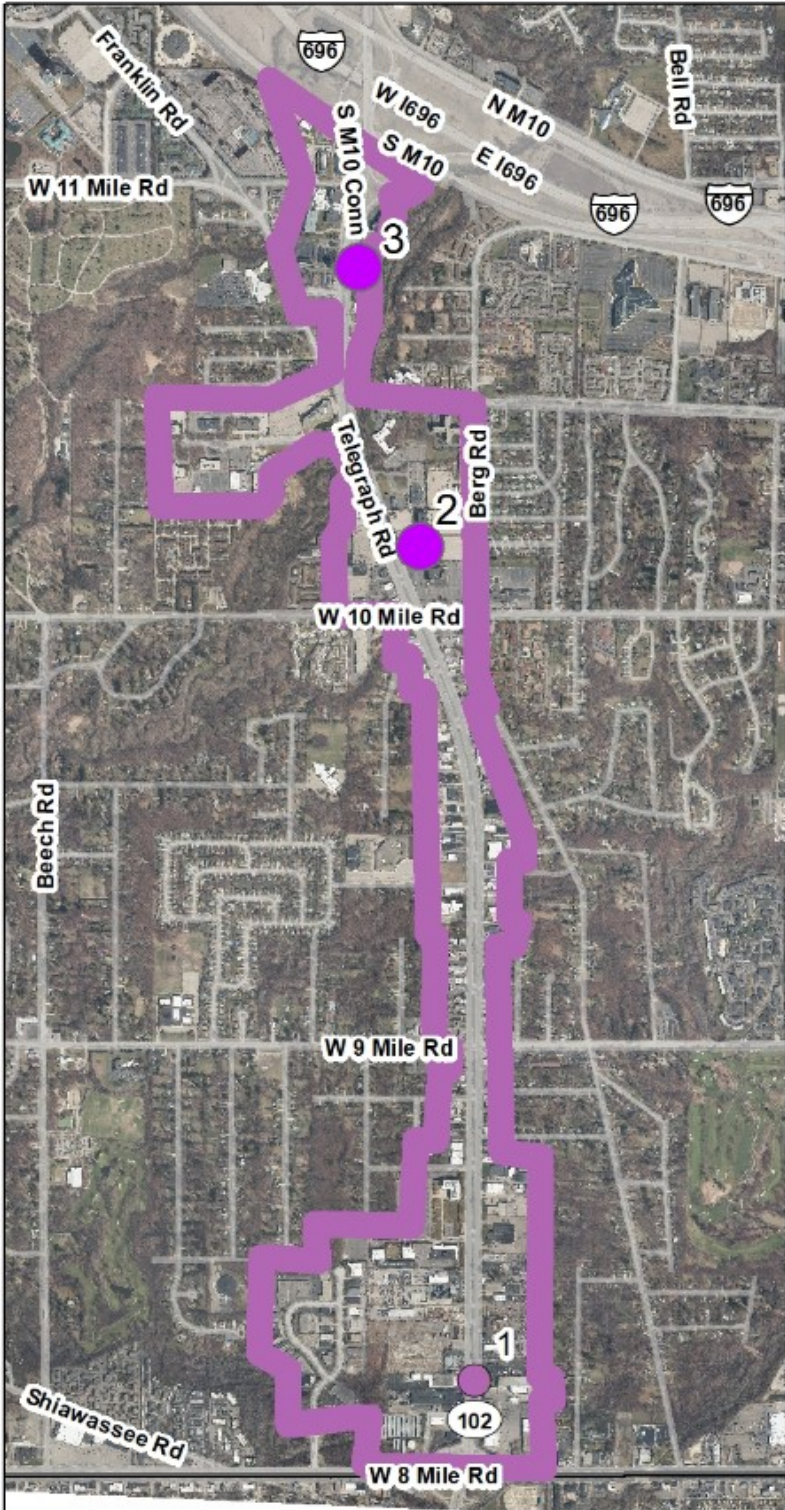
Inventory Date: 11/6/19

Inventoried By: KB

Southfield Public Arts Guide

Map

Southfield Technology Corridor



Legend

- Existing
- ★ Proposed

ID	NAME	TYPE
1	Industrial Robot Art	Existing
2	Lookie Here Dear	Existing
3	Stallion	Existing



Southfield Public Arts Guide

Map

Southfield Technology Corridor

Telegraph Rd (ROW)

Industrial Robot Art

25330 Telegraph

Lookie Here Dear (Lefkowitz)

26388 Telegraph

Stallion (Unknown)

ARTIST: Unknown
TITLE: Stallion
MATERIAL: Bronze
DIMENSIONS: 8' tall
CREATED: August 2019
LOCATION: Starbucks at 26388 Telegraph



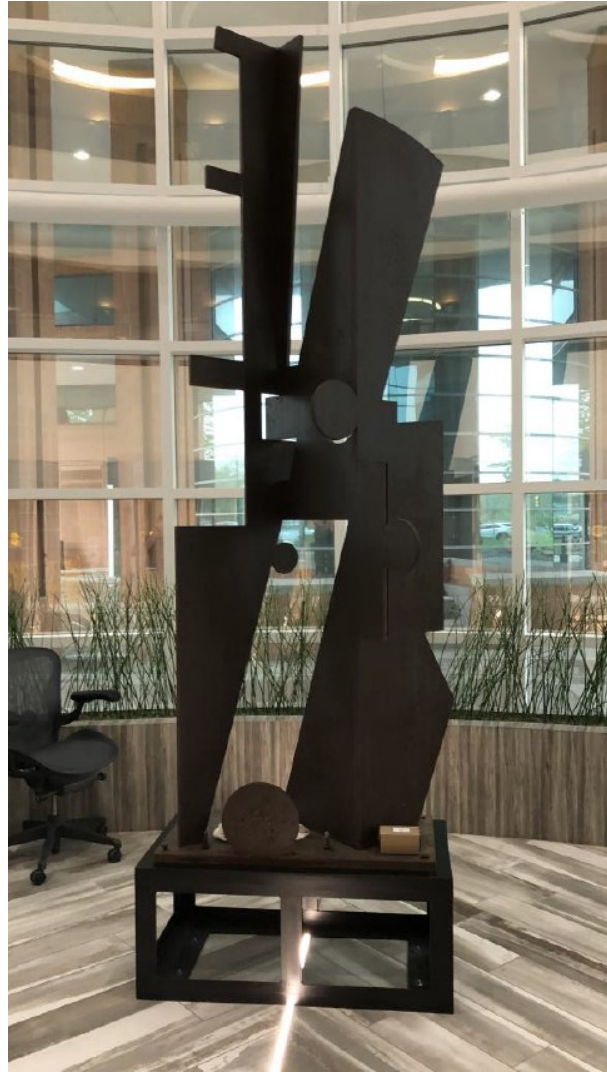
Part of Big Boy's Public Art Requirement.



Inventory Date:

Inventoried By: KB

ARTIST: Jay Lefkowitz
TITLE: Lookie Here Dear
MATERIAL: Corten Steel
DIMENSIONS: 12'H x 4'W x 2'L
CREATED: Summer 2020
LOCATION: 25330 Telegraph Rd



Jay Lefkowitz is also the creator of *Gratitude*, which is situated in the southern roundabout on Evergreen Road. This abstract steel sculpture, bold yet typical of his work, sits in the lobby of Credit Acceptance, where it serves as their Public Art Requirement for a recent project.



Inventory Date: 6/19/2020

Inventoried By: KB

ARTIST: Unknown

TITLE: Industrial Robot Art

MATERIAL:

DIMENSIONS: 11.17' l x 3.88' w x 10.83' h

CREATED:

LOCATION: Telegraph Rd Right-of-Way near 21000 & 21175 Telegraph Rd



TELEGRAPH ROAD

Commissioned by Comau



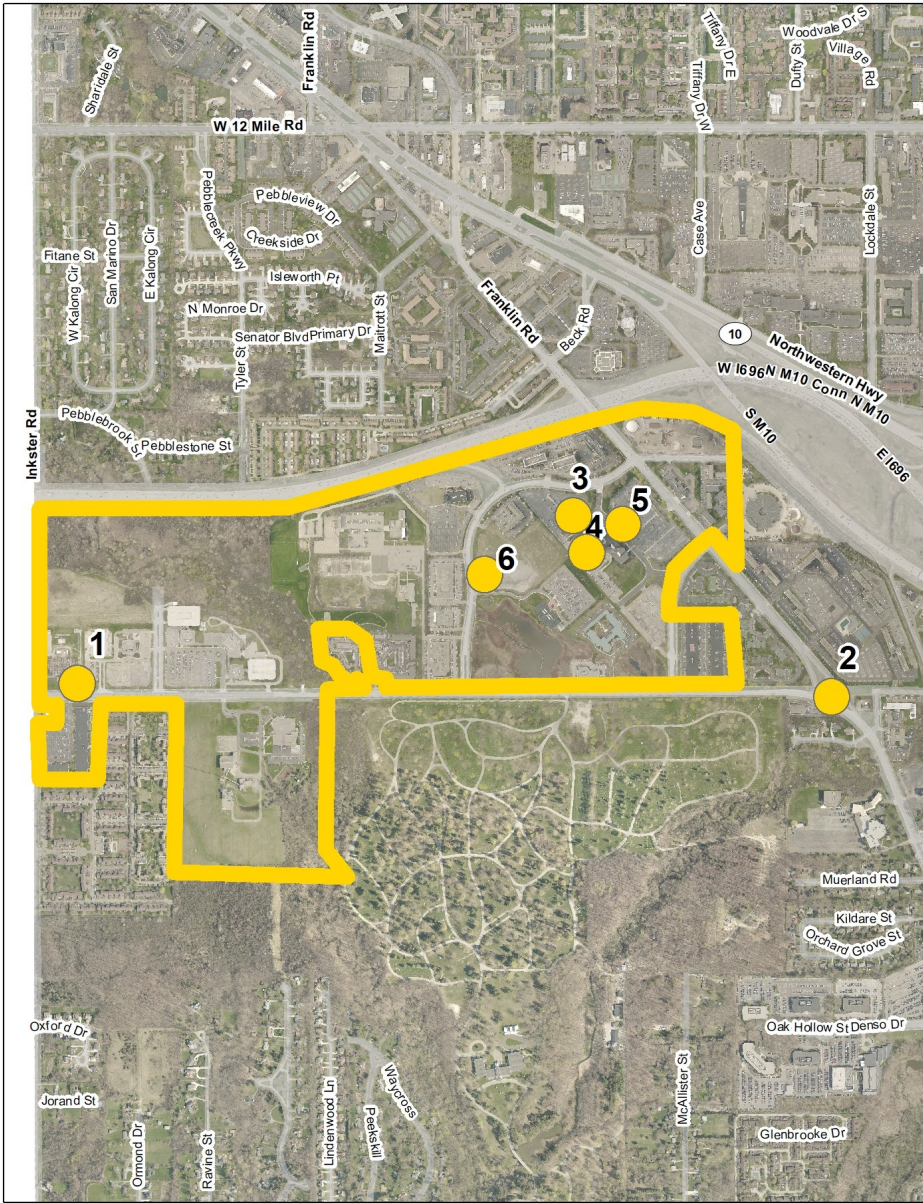
Inventory Date: 8/12/15

Inventoried By: NK

Southfield Public Arts Guide

Map

Centrepolis



Legend

- Existing
- ★ Proposed



ID	NAME	TYPE
1	C's	Existing
2	Fins	Existing
3	Unknown	Existing
4	Unknown	Existing
5	Unknown	Existing
6	Ocular Civility	Existing

Southfield Public Arts Guide

Map

Centrepolis

American Center, 26000 American Dr

Unknown #1 (Unknown)

Unknown #2 (Unknown)

Unknown #3 (Unknown)

Veoneer, 26360 American Dr

Ocular Civility (Karmo)

Eleven Mile Rd (ROW)

C's (Signgraphix)

Fins (Signgraphix)

ARTIST: Laith Karmo
TITLE: Ocular Civility
MATERIAL: Stainless Steel
DIMENSIONS: 5.5' x 3.5' x 11.5" x 5.5'
CREATED: 2019
LOCATION: Veoneer (26360 American Drive)



Laith Karmo was born in Detroit, Michigan in 1980, and raised in the Metro Detroit area. He received his Bachelor of Fine Arts degree in 2004 from the College for Creative Studies in Detroit, and his Master of Fine Arts from Cranbrook Academy of Art in Bloomfield Hills, Michigan in 2006. He has taught at Wayne State University in Detroit, Oakland Community College in Auburn Hills and the College for Creative Studies. Laith maintains a healthy studio practice in his Pontiac, Michigan studio. He's participated in several national group shows and has had solo exhibitions at Paul Kotula Projects and The Butchers Daughter in Metro Detroit. He was awarded a Kresge Artist Fellowship in 2011.

Part of Veoneer's Public Art Requirement. Installed June 2019.



Inventory Date: 9/17/19

Inventoried By: KB

ARTIST: Unknown

TITLE: Unknown (American Center #1)

MATERIAL: Marble

DIMENSIONS:

CREATED:

LOCATION: American Center, 26000 American Dr (NW corner of building)



Inventory Date: 4/21/16

Inventoried By: SM

ARTIST: Unknown

TITLE: Unknown (American Center #2)

MATERIAL: Marble

DIMENSIONS:

CREATED:

LOCATION: American Center, 26000 American Dr (South side of building)



Inventory Date: 4/21/16

Inventoried By: SM

ARTIST: Unknown

TITLE: Unknown (American Center #3)

MATERIAL: Marble

DIMENSIONS:

CREATED:

LOCATION: American Center, 26000 American Dr (NE Corner of Building)



Inventory Date: 4/21/16

Inventoried By: SM

ARTIST: Signgraphix

TITLE: Fins

MATERIAL: Steel

DIMENSIONS: 18' x 47"

CREATED: 2019

LOCATION: Franklin and 11 Mile Roundabout



Created as part of Centrepolis wayfinding signage project.



Inventory Date: 6/19/2020

Inventoried By: KB

ARTIST: Signgraphix

TITLE: C's

MATERIAL: Steel

DIMENSIONS: 126" x 96"

CREATED: 2019

LOCATION: 11 Mile and Inkster



Created as part of Centrepolis wayfinding signage project.



Inventory Date: 6/19/2020

Inventoried By: KB

Southfield Public Arts Guide

Map

Miscellaneous Locations



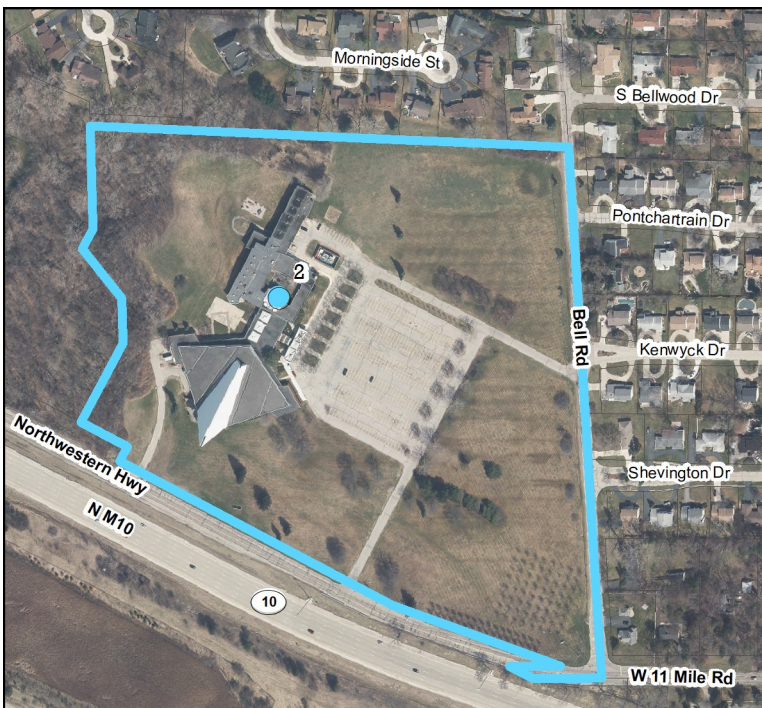
Legend

TYPE

- Existing
- ★ Proposed

ID	NAME	TYPE
1	Stargazer	Existing
2	Unknown (Shaarey Zedek)	Existing
3	Comfort Women Peace Statue	Existing
4	Unkonwn #1 (St. John's Armenian Church)	Existing
5	Unknown #2	Existing
6	Unknown (Lazaryan)	Existing
7	Let Us Rejoice	Existing
8	R-S19 (Prelude to Peace)	Existing
9	Mapletree Plaza	Proposed

100/200 Galleria Officentre



Shaarey Zedek, 27375 Bell Rd



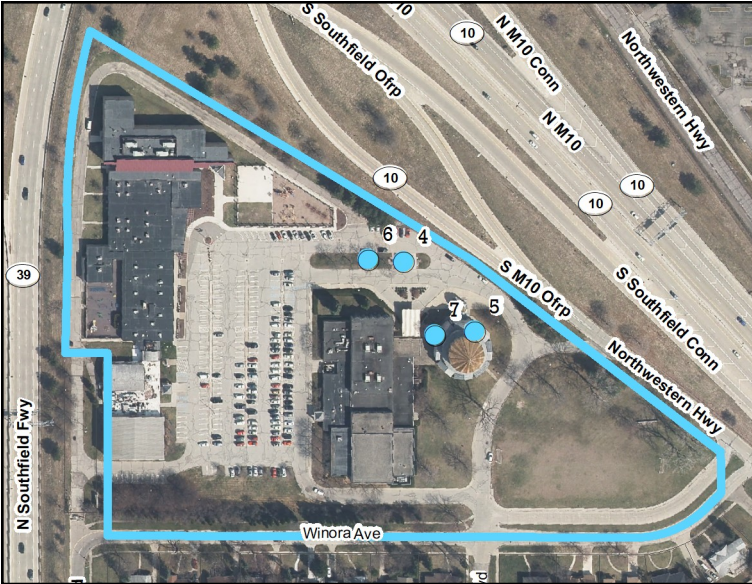
Korean American Cultural Center

24666 Northwestern Hwy

Southfield Public Arts Guide

Map

Miscellaneous Locations



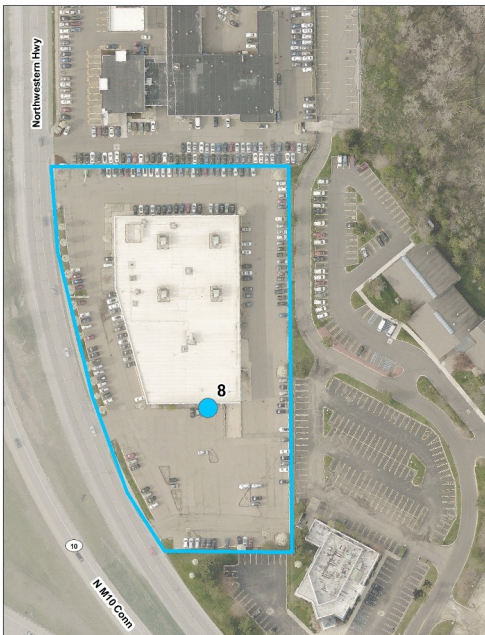
St. John Armenian Church
22001 Northwestern Hwy

Legend

TYPE

- Existing
- ★ Proposed

ID	NAME	TYPE
1	Stargazer	Existing
2	Unknown (Shaarey Zedek)	Existing
3	Comfort Women Peace Statue	Existing
4	Unkonwn #1 (St. John's Armenian Church)	Existing
5	Unknown #2	Existing
6	Unknown (Lazaryan)	Existing
7	Let Us Rejoice	Existing
8	R-S19 (Prelude to Peace	Existing
9	Mapletree Plaza	Proposed



Glassman Subaru
27000 Telegraph Road



Mapletree Apartments
28509 Franklin Road

Southfield Public Arts Guide

Map

Miscellaneous Locations

Galleria Officentre

100/200 Galleria

Stargazer (Hall)

Congregation Shaarey Zedek

27375 Bell Rd

Unknown (Unknown)

Korean American Cultural Center

24666 Northwestern Hwy

Comfort Women Peace Statue (Kim)

St. John's Armenian Church

22001 Northwestern Hwy

Let Us Rejoice (Merigian)

Unknown #1 (Unknown)

Unknown #2 (Unknown)

Unknown Memorial (Lazaryan)

Miscellaneous

R-S19 (Prelude to Peace) (Valdez)

Mapletree Plaza (PEA)

ARTIST: Mr. & Mrs. Kim Un-Sung and Kim Seo-Kyung

TITLE: Comfort Women Peace Statue

MATERIAL: Bronze

DIMENSIONS:

CREATED:

LOCATION: Korean American Cultural Center, 24666 Northwestern Hwy



Commissioned by the Korean American Community of Michigan, the sculpture reads, “The young Korean woman with a sparrow on her shoulder, casting a shadow of an older person, and staring at the land of Japan, symbolizes the hitherto unresolved issue of ‘Comfort Women’, a hideous crime of sexual slavery committed by the Japanese military during World War II. It also stands; For the Dignity of Human Beings, the Human Rights of the Women of the World, and For the Future of Mankind.” Estimates vary as to how many women were involved, with numbers ranging from as low as 20,000 to as high as 360,000 to 410,000. Many of the women were from occupied countries, including Korea, China, and the Philippines. The last surviving victims have become public figures in Korea, where they are referred to as halmoni, the affectionate term for 'grandmother'. In December 2011, a statue of a young woman was erected in front of the Japanese Embassy to honor the comfort women. At least 30 similar monuments honoring the comfort women have been established worldwide, including Southfield’s.



Inventory Date: 9/3/14

Inventoried By: KS

ARTIST: John Merigian

TITLE: Let Us Rejoice

MATERIAL:

DIMENSIONS:

CREATED: 1980

LOCATION: St. John's Armenian Church, 22001 Northwestern Hwy



Three attenuated figures comprise the sculpture group "Let Us Rejoice" at Saint John's Armenian Church. The upraised arms of the figures are an expression of joy. One of the figures of John Merigian's sculpture group "Let Us Rejoice." Mr. Merigian grew up in Detroit and attended Cranbrook School in Bloomfield Hills, Michigan. Merigian went on to earn a BFA at the University of Michigan. A gift from the artist in honor of the Merigian Family, 1980.



Inventory Date: 6/15/16

Inventoried By: KS

ARTIST: Michael D. Hall (Date of Birth: 1941)

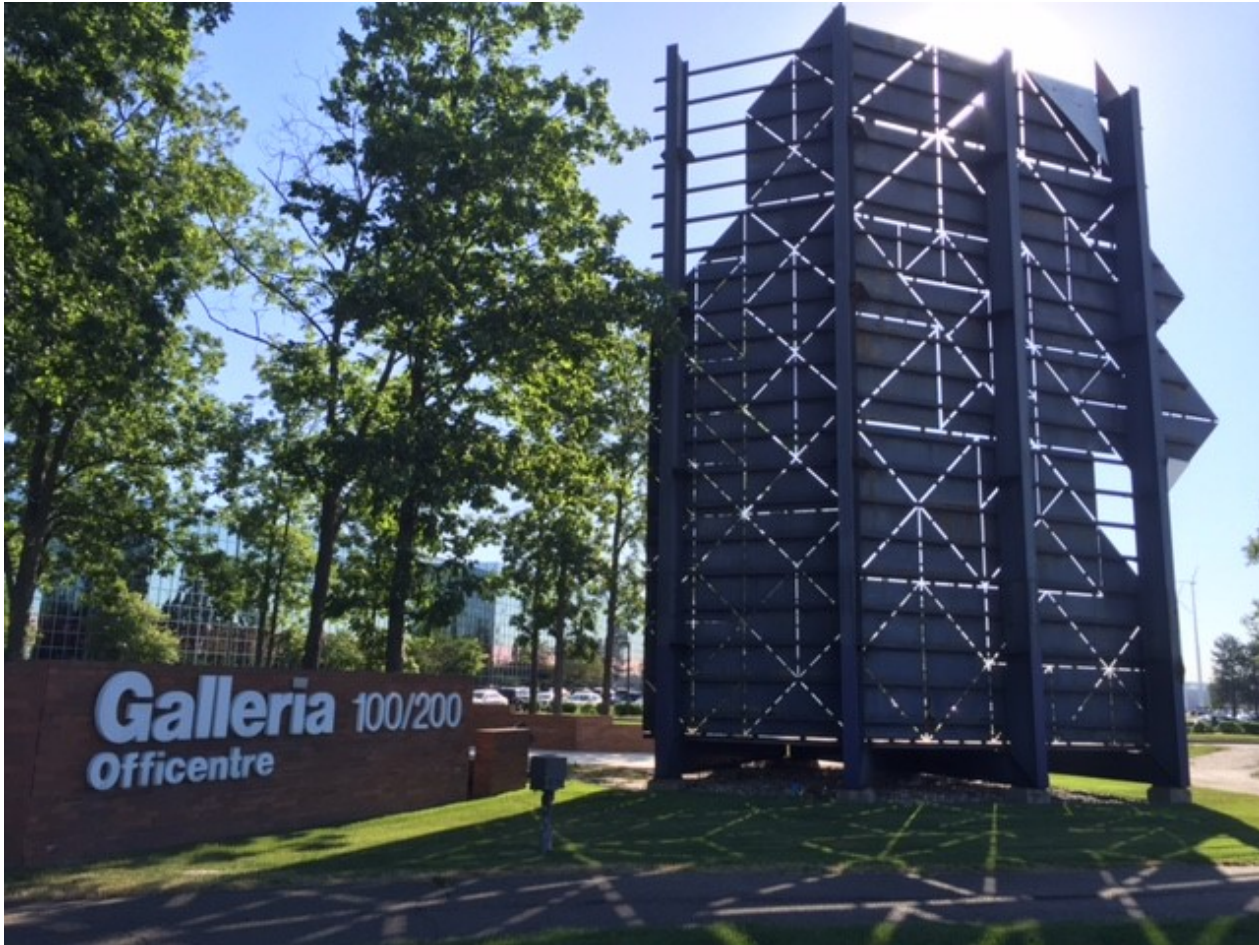
TITLE: Stargazer

MATERIAL: Painted steel

DIMENSIONS: 50'h

CREATED: 1983

LOCATION: 100/200 Galleria Officentre



Installed near the office complex's entrance, the two 50' walls were meant to screen the viewer from the busy highway beyond. Viewed from the highway, the piece is black; however, viewed from the office side, the piece is painted blue to mimic the sky and triangular steel plates are bolted to supports leaving openings to appear like twinkling stars. The intent of the piece was to also complement the design of the existing building with its grid-
ded façade, blue glass, and stepped roofline. The artist was born in California in 1941, studied at the University of North Carolina and University of Washington before settling in the Detroit area.



Inventory Date: 6/21/16

Inventoried By: KS

ARTIST: Unknown

TITLE: Unknown

MATERIAL:

DIMENSIONS:

CREATED:

LOCATION: Congregation Shaarey Zedek, 27375 Bell Rd



Inventory Date: 6/13/16

Inventoried By: KS

ARTIST: Unknown

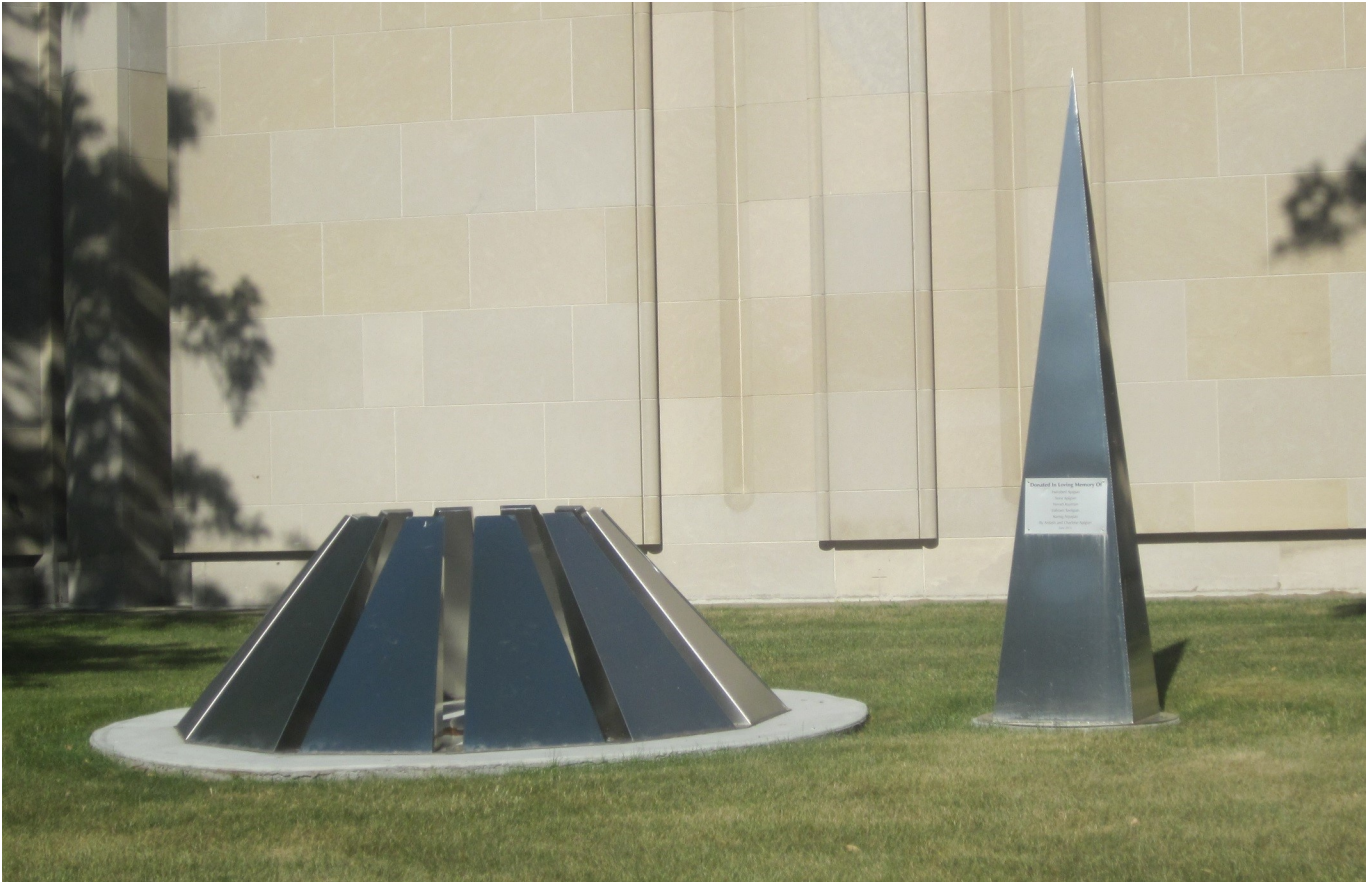
TITLE: Unknown

MATERIAL:

DIMENSIONS:

CREATED:

LOCATION: St. John's Armenian Church, 22001 Northwestern Hwy



MISCELLANEOUS LOCATIONS

Donated in memory of Hairabed Apigian, Sona Apigian, Nevert Kuzirian, Vahram Tavtigan, Karnig Arpajian by Ardash and Charlene Apigian, June 2015



Inventory Date: 6/20/16

Inventoried By: NK

ARTIST: Unknown

TITLE: Unknown

MATERIAL:

DIMENSIONS:

CREATED:

LOCATION: St. John's Armenian Church, 22001 Northwestern Hwy



MISCELLANEOUS LOCATIONS



Inventory Date: 6/20/16

Inventoried By: NK

ARTIST: Arthur Lazaryan

TITLE: Unknown

MATERIAL:

DIMENSIONS:

CREATED:

LOCATION: St. John's Armenian Church, 22001 Northwestern Hwy



This monument was erected to honor the memory of the countless souls of Armenians who perished as witness of their Christian faith and identity during the pogroms perpetrated by the Azeris from 1988-1991 in the cities of Baku, Sumgait, Kirovabad, and other cities in Azerbaijan, 2013.



Inventory Date: 6/20/16

Inventoried By: NK

ARTIST: Dino Valdez
TITLE: R-S19 (Prelude to Peace)
MATERIAL: Spray paint, house paint
DIMENSIONS: 25' H x 150' W
CREATED: November 2019
LOCATION: 27000 Telegraph Road



Abstract mural on the south wall of 27000 Telegraph Road. Colorful and highly noticeable from area freeways, this mural was completed as part of the Public Art Requirement for Glassman Automotive.



Inventory Date: 11/6/19

Inventoried By: KB

ARTIST: PEA Group
TITLE: Mapletree Plaza
MATERIAL: Concrete, steel and landscaping
DIMENSIONS:
CREATED: 2021
LOCATION: 28509 Franklin Rd.



MISCELLANEOUS LOCATIONS

Serving as Mapletree Apartment's Public Art Requirement for new townhouses, this plaza serves as a relaxing pedestrian space in an area that had no amenities previously.



Inventory Date: 11/6/19

Inventoried By: KB

Southfield Public Arts Guide

Map

Unplaced

River Series No. 4 (Brose)

Unknown (Bertoia)

Woman with Fish (McDonnell)

Totem Pole (Unknown)

Laughing Elephant (Kraft)

Obi (Unknown)

Kimono (Unknown)

ARTIST: Joseph Anthony McDonnell (Date of Birth: 1936)

TITLE: Woman with Fish

MATERIAL: Fiberglass & bronze

DIMENSIONS: 6' tall woman with 1' base and 1' basket

CREATED: 1965-66

LOCATION: Formerly located at Northland Mall in the north mall



Fountain piece completed 1965-66, cast in Italy; Damage: broken fins on fish. The artist, Mr. McDonnell, was born in 1936 in Detroit and currently lives in Seattle, Washington. He studied at University Notre Dame with post graduate work completed in Florence, Italy. He has commissioned works for Al Taubman and Bill Gates and has completed over 100 sculptures. Recommendation: Near the water feature on the west of the Library.



Inventory Date:

Inventoried By:

ARTIST: Attributed to Gwen Lux (1908-1987)

TITLE: Totem Pole

MATERIAL:

DIMENSIONS: 9-10' tall

CREATED:

LOCATION: Formerly located at Northland Mall



9-10' tall smaller totem pole of the two totem poles originally located at the mall. Lux was born in Chicago in 1908 and began her art studies in Detroit at age 14, taking classes with Mary Chase Perry Stratton at Pewabic Pottery. She later studied at both the Maryland Institute College of Art and at the School of the Museum of Fine Arts, Boston. In 1933 she received a Guggenheim Fellowship. Lux lived and worked in Detroit, Michigan in the early part of her career. Her sculptures combined abstraction and realism, and were frequently constructed from polyester resin concrete and metals. In poor condition.



Inventory Date:

Inventoried By:

ARTIST: Morris Brose (1914-2000)

TITLE: River Series No. 4

MATERIAL: Wood

DIMENSIONS: 76"x71"

CREATED: 1969

LOCATION:



Polish/American was born in Wyszkow, Poland. He became a sculptor and instructor of sculpture at the Detroit Institute of Arts, Wayne State University and Cranbrook Academy of Art, Bloomfield Hills, Michigan. Cranbrook was designed by architect and faculty member, Eliel Saarinen who collaborated with Charles and Ray Eames on chair and furniture design. artist to have her sculpture, "Sojourner Truth," commissioned for the Emancipation Hall in the Capital Visitor Center in Washington DC), Cory Puhlman (televised Pastry Chef extraordinaire), Though many of Brose's pieces are considered whimsical his more geometric pieces can be considered an early representation of the abstract development which is apparent in his bronze doors of the Detroit Holocaust Memorial in Detroit from the 1980s.

Originally installed at the Southland Mall in Taylor. Restored Summer 2019 and currently looking for a new home.



Inventory Date:

Inventoried By:

ARTIST: Harry Bertoia (1915-1978)
TITLE: Sunlit Straw "Cloud" Series
MATERIAL: Gold bronze metal coating on metal
DIMENSIONS:
CREATED:
LOCATION: recently located at Northland Mall



Formerly located at Genesee Valley Mall in Flint, 1967. Removed circa 1980. Needs protection and restoration. Recommendation: to be sold.



Inventory Date: 11/21/17

Inventoried By: Arts Commission

ARTIST: Arthur M. Kraft (1922-1977)

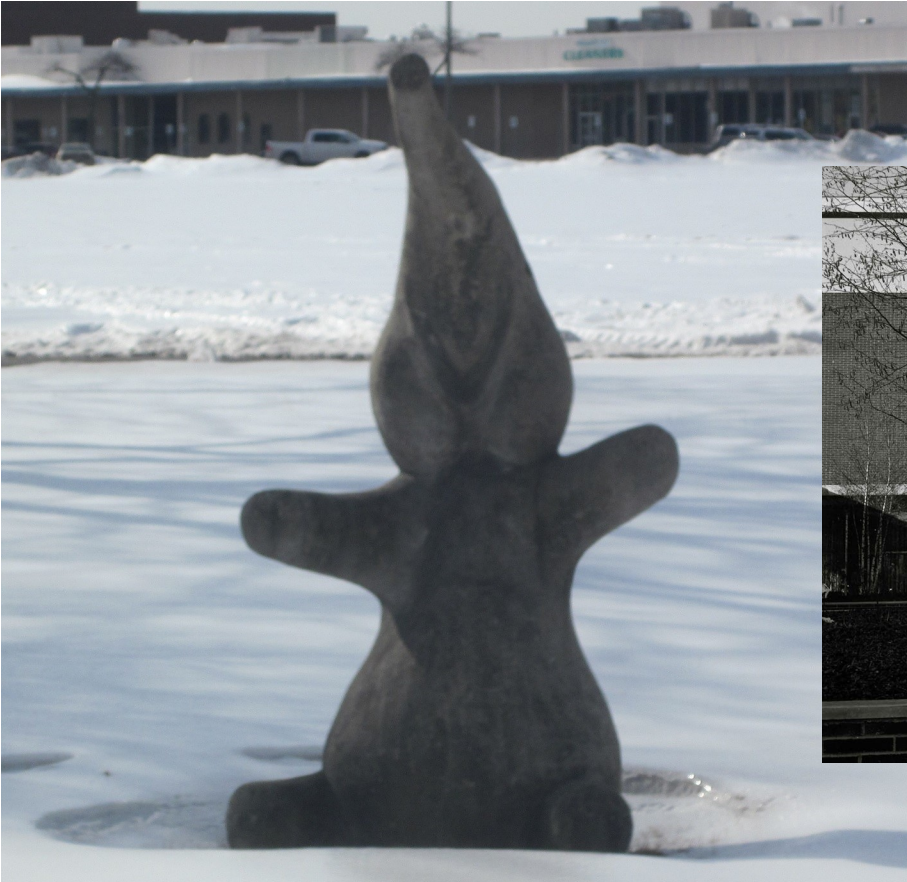
TITLE: Laughing Elephant

MATERIAL: Cast Stone

DIMENSIONS: 4'2"l x 4'w x 8'h

CREATED:

LOCATION: Formerly located at Northland Mall in the Great Lakes Court



UNPLACED

Arthur Kraft (1922 - 1977) was a native of Kansas City. Education: Yale University, Kansas City Art Institute, Nelson Gallery of Art. Notable works: "Court of the Penguins" (1979) in Kansas City's Country Club Plaza, Mural at the downtown Kansas City Public Library, "Family" (1961) at the Executive Plaza Office Building in Kansas City. Movement: Expressionism. "He also left his mark through such creations as a 10-ton laughing elephant at a Detroit shopping center" Restoration needed. Recommendation: to be placed in the plaza between the pool & ice arena or outside the ice arena entrance near the parking lot.



Inventory Date: 3/5/15

Inventoried By: NK

ARTIST: Unknown, donated by Akira (Andy) Kataoka

TITLE: Kimono

MATERIAL: Hand-woven silk

DIMENSIONS: 4'x6'

CREATED:

LOCATION: City Hall underground corridor



Originally worn by the wife of the Chief Retainer (Warrior) for a Feudal Lord from Tokitsuhhan Kyushu, Japan. This 100 year old kimono features bird decorations of metallic gold, black, orange, and green, and green high kimono silk. Upon his retirement, “Andy” Kataoka, who was the first DENSO employee in North America, personally gave the kimono to the City of Southfield as a symbol of DENSO’s long and mutually prosperous relationship. It was Andy’s hope that the kimono would bring good fortune to the City of Southfield. Removed from City Hall lobby in 2020.



Inventory Date: 5/18/15

Inventoried By: NK

ARTIST: Unknown, donated by Akira (Andy) Kataoka

TITLE: Obi

MATERIAL: Hand-woven silk

DIMENSIONS: 12'x22'

CREATED:

LOCATION: City Hall underground corridor



Originally worn by the wife of the Chief Retainer (Warrior) for a Feudal Lord from Tokitsu-Han, Kyushu, Japan. The green obi (belt) is 150 years old. It is the oldest of the individual pieces that make up the kimono silk. Personally given to the City of Southfield as a symbol of DENSO's long and mutually prosperous relationship with the city. It was Andy Kataoka's hope that the kimono would bring good fortune to the City of Southfield.



Inventory Date: 5/18/15

Inventoried By: NK

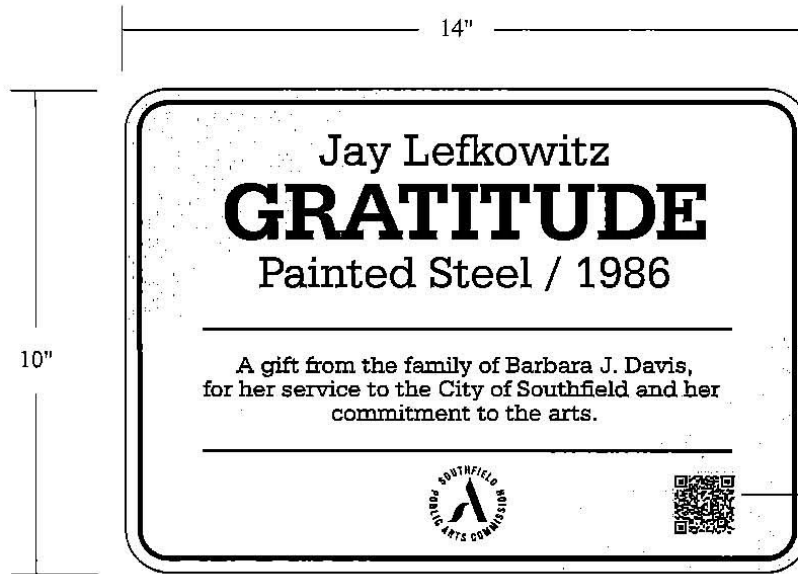
Southfield Public Arts Guide

Art Identification Plaques

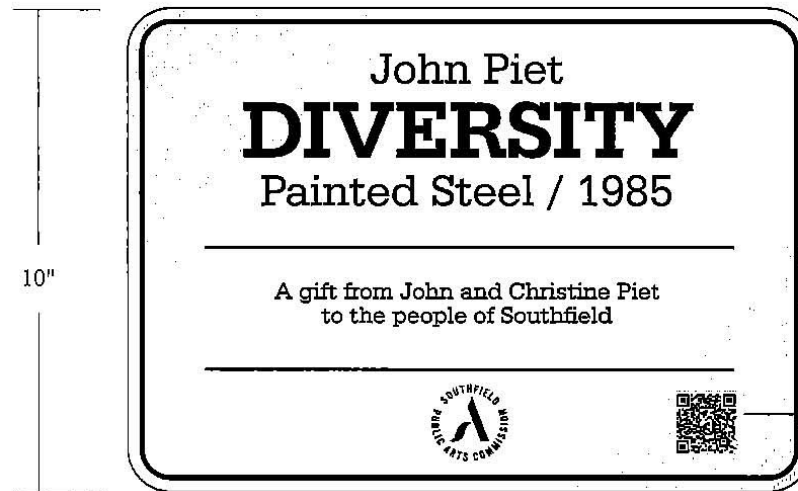


Southfield Public Arts Guide

Art Identification Plaques (example)



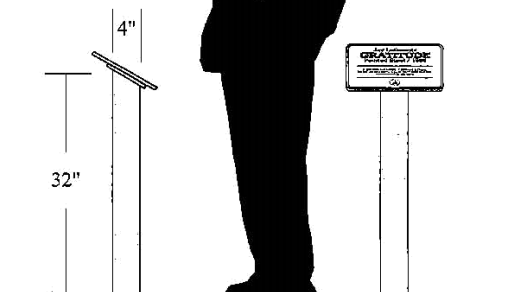
Scale: 3" = 1'-0"



1 1/4" decal to be applied by others.

Plaques to be mounted at an angle onto a 4" diameter aluminum support post.

2 Art Identification Plaques on Posts



Southfield Public Arts Guide

Index of Artists

Artist Name	Title	Page(s)
Arrechea, Alexandre	Citigroup, Helmsley	83, 84
Barr, David	Coasting the Baseline Obelisk	90, 102
Bertoia, Harry	Unknown Sculpture	134
Brose, Morris	River Series No. 4	133
Bush, Elwyn	Malcolm X Bust	68
Collier, Brian	In the Beginning, A Potter's Touch, These Hands	41, 49, 59
Cooper, Floyd	Brown Honey in Broomwheat Tea	34
Cook, Dustin	LTU Barrier Mural	77
Czerska, Kinga	Singularity	87
Dyer, Jane	Bedtime Stories	32
Drenters, Andreas	Pioneer Family II	85
Eisenhardt, Laura	Seasons of the Imagination	50
Etrog, Sorel	Unknown Sculpture	27
Fredericks, Marshall	Boy and Bear, The Leaping Gazelle, Two Bears	23, 34, 57
Golkar, Ali	Blossom, Readings	74, 75
Hall, Michael D.	Stargazer	123
Gruizenga, Douglas	Enguine-uity	72
Harding, Tim	Still Waters Reflection	54
Halperin, Wendy Anderson	Sophie and Rose	52
Hipp, Gordon	Falling Icarus	20
HED	Red Pole Park	86
Johnson, Edmond	Unnamed (3)	65, 66, 67

Southfield Public Arts Guide

Index of Artists

Artist Name	Title	Page(s)
Kelman, Janet	Transformation	56
Karmo, Leith	Ocular Civility	112
Kim, Un-Sung and Seo-Kyung	Comfort Women Peace Statue	121
Kramer, Michaele "Mino" Duffy	Henry Ford, Father of Industrial Education	71
Kraft, Arthur	Laughing Elephant, Peacock Sculpture	24, 135
Lazaryan, Arthur	Unknown	127
Lasser, Marshall	The Boulders at Carpenter Lake	96
Lefkowitz, Jay	Gratitude, Lookie Here Dear	21, 108
Leiserowitz, Melvin	The City of Southfield	17
Lux, Gwen	Peacock Sculpture, Totem Pole	23, 132
McDonnell, Joseph Anthony	Moby Dick, Woman with Fish	20, 131
Makohon, Patrizia	Iter Vitae	104
Massey, Hubert	Tapestry of a Community	80
McKnight, David	The Cat in the Hat	37
Merigian, John	Let Us Rejoice	122
Pepper, Beverly	Ockham's Wedge	73
Nicolin, Sheila	LTU Barrier Mural	77
Perry, Clifton	Motown Mural	25
PEA Group	Mapletree Plaza	129
Piet, John	Diversity	18
Pinkney, Jerry	Wind Blowing	63
Pomodoro, Gia	The Crowd	86
Price, Gary Lee	Journey of the Imagination, Mark Twain Bench, Words of Wisdom	42, 43, 64

Southfield Public Arts Guide

Index of Artists

Artist Name	Title	Page(s)
Reid, Karl	Two Friends	97
Saarinen, Lilian Louisa Swann	The Great Lakes Water Hole	99
Saville, Joy	Les Fleurs de Babylone	38
Seuss, Dr. (aka Theodor Seuss Geisel)	Fox in Socks, Oh, the Places You'll Go, Oh, the Stuff You Will Learn, A Plethora of Fish, Singing Cats, Unorthodox Taxidermies	39, 46-48, 51, 58-61
Signs by Crannie	"SFLD" Letters	24
Signgraphix	Striving, Endeavor, Fins, C's	91, 92, 116, 117
Spearman, James	Martin Luther King Jr. Bust	44
Staff of the Southfield Public Library	Book Quilt, Southfield 50th Anniversary Quilt	33, 53
Venti, Anthony Bacon	The Voyage Begins	62
Valdez, Dino	LTU Barrier Mural, R-S19 (Prelude to Peace)	79, 128
Youngman, W. Robert	Untitled	98

Southfield Public Arts Guide

Appendix

Item

- A-1 Ordinance #1674*: Southfield Public Arts Commission
- A-2 Southfield Arts Commission Bylaws
- A-3 Public Art Requirement

*Please note that Ordinance #1630 published 11/30/14 established the Arts Commission; Ordinance #1674 increased the membership and replaced the originally adopted Ordinance

ORDINANCE NO. 1674

AN ORDINANCE TO AMEND ARTICLE VI, SOUTHFIELD PUBLIC ARTS COMMISSION, OF CHAPTER 4, BOARDS AND COMMISSIONS, OF TITLE I, ADMINISTRATION, BY AMENDING SECTION 1.179, MEMBERSHIP

THE CITY OF SOUTHFIELD ORDAINS:

THE CODE OF THE CITY OF SOUTHFIELD IS HEREBY AMENDED BY AMENDING SECTION 1.179, MEMBERSHIP, OF ARTICLE VI, SOUTHFIELD PUBLIC ARTS COMMISSION, OF CHAPTER 4, BOARDS AND COMMISSIONS, OF TITLE I, ADMINISTRATION, WHICH SECTION 1.179 SHALL BE AMENDED TO READ AS FOLLOWS:

SECTION 1

ARTICLE VI. SOUTHFIELD PUBLIC ARTS COMMISSION

Sec. 1.177 Purpose and Intent

It is the purpose of this Article to promote the public welfare and to serve the public interest, convenience, and enjoyment through the promotion of the arts in the City of Southfield, by establishing physical works of art in public places throughout the City. It is further determined that the promotion of public art can help to build the economy of the city through promotion of tourism and economic development, enhance the city's character and identity, promote the cultural heritage and artistic development of the city, expand the opportunities for residents to experience public art, and improve the lives of its citizens through the humanization and individualization of public spaces and structures. In furtherance of these goals, the City Council has determined the need to form a public arts commission to advocate for, promote and participate in the establishment, selection and installation of public artwork in the city.

Sec. 1.178 Creation

For the purposes herein provided, there is hereby created in and for the City a commission to be known as the Public Arts Commission (the "Commission").

Sec. 1.179 Membership

- (a) The Public Arts Commission shall consist of eleven (11) members, six (6) of whom shall be appointed by the City Council, and the remaining five (5) shall be appointed by the Mayor, with confirmation thereof by the City Council. All members of the Commission shall be appointed on the basis of demonstrated experience and knowledge of the arts. Insofar as possible, members of the Commission shall represent and include a landscape architect, a registered architect of the state of Michigan, a visual arts educator, an art gallery owner or operator, an urban designer, an art fundraiser, and three (3) members who are either a recognized visual artist, art collector, or art curator. At least two members of the Commission shall be residents of the City. The remaining members and ex-officio members may or may not be residents of the City.

The terms of office of members of the Commission shall be three (3) years, except that initial members of the Commission shall be appointed for staggered terms with three (3) members appointed for one (1) year terms, three (3) members appointed for two (2) year terms, and three (3) members appointed for three (3) year terms.

- (b) Members of the Commission shall serve without compensation and may be removed for cause by the appointing authority. Any vacancy in office shall be filled by the City Council for the remainder of the unexpired term.
- (c) The Commission shall elect a Chairperson, Secretary, and Treasurer at its first meeting every year, which shall be held in January. At least five (5) members of the Commission shall constitute a quorum for the transaction of business. The Commission may adopt by-laws to outline the proper conduct and order of their meetings and the duties of the officers.
- (d) The Commission shall hold such regular meetings as it deems necessary and advisable; however, it shall generally hold at least one (1) meeting each month.
- (e) The City Planner, City Parks and Recreation Landscape Architect, and City Librarian shall serve as ex-officio (non-voting) members of the Commission. The City Planner will serve as the City staff liaison to the Commission.

Sec. 1.180 Powers and Duties.

(a) The Commission shall be responsible for developing and implementing a public art program within the City so as to provide for the acquisition, placement, and display of works of art within public areas of the City. "Works of Art" shall mean all forms of visual arts, including, but not limited to:

- Sculpture- in any material or combination of materials;
- Painting- all media, including portable and permanently affixed works, such as murals and frescoes;
- Photography;
- Mosaics;
- Mixed media – any combination of forms or media including collage;
- Water features and fountains; and
- Streetscape and landscape features and elements, including signage, lighting, benches, clocks, kiosks, and planters.

(b) Specifically, the Commission shall:

- (1) Encourage and stimulate citizens, developers, landowners, contractors and architects to provide and support displays of works of art for public enjoyment;

- (2) Develop and promulgate a comprehensive public art plan for the City. The plan will list long term objectives of the Commission in carrying out its purpose as established herein; establish criteria for the selection of artists and works of art; create a list of potential locations throughout the city for the placement of works of art and develop standards for the placement thereof; develop a list of priorities for the funding of various public art projects throughout the City; identify the existing inventory of public works of art; and create standards and guidelines for public accessibility and safety. Upon completion of the plan, the Commission shall present same to the City Council for review and approval;
- (3) Reinforce the City's placemaking goals by commissioning works of art that are distinctive, yet particularly reflect and promote the City's identity or the identity of individual neighborhoods or business districts within the City;
- (4) Ensure that public works of art are compatible in scale, material, form and content with their intended surroundings;
- (5) Assure that within the overall public art program reasonable diversity is attained in style, scale, media, and materials represented;
- (6) Establish guidelines for site selection, maintenance programs for ensuring the structural integrity and aesthetic quality of the site and any work of art, including the removal of any work of art;
- (7) Raise funds for the acquisition and installation of public works of art through the application of grants, private sponsorships, donations, and other fund-raising strategies; explore the establishment of a subcommittee whose primary focus will be to undertake and promote a capital fund-raising campaign in support of the Commission's purposes hereunder. All funds raised will be held by and in the name of the City, but will be held in a trust account entitled "public art fund".
- (8) Identify opportunities for acquisition of public works of art to be situated within the City;
- (9) Develop a process for the solicitation, acceptance and placement of public works of art by the City;
- (10) Develop relationships with artists, galleries, museums, art professionals, architects, community members, other governmental entities, businesses and the City Planning Department to establish public works of art priorities in the City;
- (11) Create and implement a community education and outreach program regarding public art;
- (12) Collaborate with City staff through the City Planner and private project development within the City to promote and enhance the inclusion of public works of art within the development, where appropriate;
- (13) Promote community identity through public works of art within neighborhood and business districts.
- (14) Promote the economic vitality of the City through a broad range of public art projects;
- (15) Submit to the City Council on a least a quarterly basis a written report detailing the activities, accomplishments, and a description of how such activities have achieved the objectives of the Commission.

SECTION 2

Should any section, subsection, clause, or paragraph of this Ordinance be declared by a court of competent jurisdiction to be invalid, the same will not affect the validity of the Ordinance as a whole or part thereof other than the part so declared to be invalid.

SECTION 3

Rights and duties which have matured; penalties which have been incurred; proceedings which have begun and prosecutions for violations of law occurring before the effective date of this Ordinance are not affected or abated by this Ordinance.

SECTION 4

All ordinances, parts of ordinances, or codes in conflict herewith are hereby repealed only to the extent necessary to give this Ordinance full force and effect.

SECTION 5

This ordinance shall become effective upon passage and publication.

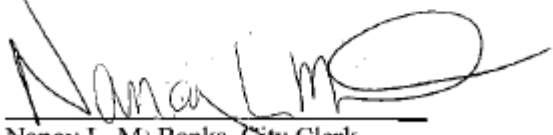
KENSON J. SIVER Mayor

NANCY L.M. BANKS, City Clerk

Introduced: 03/27/2017
Enacted: 04/17/2017
Published: 05/04/2017

I, Nancy L. M. Banks, the duly elected and qualified City Clerk of the City of Southfield, County of Oakland, State of Michigan, do hereby certify that the foregoing resolution was introduced on March 27, 2017 and enacted on April 17, 2017 by the Southfield City Council at their Regular Council Meeting, in the Council Chambers of the Municipal Building, 26000 Evergreen Road, Southfield, Michigan. Ordinance No. 1674 will become effective on May 4, 2017.

Dated: April 19, 2017



Nancy L. M. Banks, City Clerk

Adopted 4/28/2015

Southfield Public Arts Commission By-Laws

Mission Statement

The Southfield Public Arts Commission was established to advise the City Council on matters affecting public art within the City. The Southfield Public Arts Commission recognizes that public art creates a unique sense of place and distinction, enjoyment and pride for all citizens, businesses, and visitors to the City of Southfield. The goal of the Southfield Public Arts Commission is to create a stimulating environment that reflects and enhances the City's heritage, diversity, and character through public artworks integrated in the architecture, infrastructure, and landscape of the City. The Southfield Public Arts Commission administers and develops projects which accomplish this mission by:

- Provide a system of review for acceptance and placement of public art within the City;
- Provide a means to improve and maintain visual and cultural aspects of the City;
- Expand public experience through exposure to various public art forms which enhance and improve public and private facilities and the City's environment;
- Encourage and stimulate citizens, developers, landowners, contractors and architects to support public displays of art for public enjoyment.

Article I: Name

The name of the Commission shall be the Southfield Public Arts Commission (the "Commission").

Article II: Purpose and Objectives

The Commission was formed pursuant to Ordinance No.1630, enacted by the Southfield City Council on September 22, 2014, based upon the findings of the City Council that the advancement and support of public art can assist in building the economy of the city through promotion of tourism and economic development, enhance the city's character and identity, promote the cultural heritage and artistic development of the city, expand

the opportunities for residents to experience public art, and improve the lives of its citizens through the humanization and individualization of public spaces and structures.

Article III: Membership

- A. Commission members shall be comprised of individuals possessing a demonstrated experience and knowledge of the arts. The Commission shall consist of nine (9) members, six (6) of whom are appointed by the City Council, and the remaining three (3) shall be appointed by the Mayor, with confirmation thereof by the City Council.
- B. The City Planner, the City Parks and Recreation Landscape Architect, and the City Librarian shall serve as ex-officio (non-voting) members of the Commission. The City Planner will serve as the City staff liaison to the Commission.
- C. Members shall serve on this commission on a voluntary, non-paid basis.
- D. Vacancies on the Commission shall be filled by City Council appointment. Members of the Commission may be removed for cause by the appointing authority.
- E. Three consecutive absences from a meeting during a member's term shall constitute a resignation, unless an explanation is received and approved by a majority vote of the Commission. Four absences from a meeting by a member within any 12 month period shall constitute a resignation, unless an explanation is received and approved by a majority vote of the Commission.

Article IV: Officers

- A. The Commission shall consist of the following officers:
 - 1. Chairperson
 - 2. Vice Chairperson
 - 3. Secretary
 - 4. Treasurer
- B. Election of officers shall be held at the Commission's first meeting and annually thereafter at the regular January meeting.
- C. No person shall hold more than one office at the same time.
- D. The term of officers shall be for one year, or until their successors are elected.

Article V: Duties of Officers

A. The Chairperson shall:

1. call and preside at all meetings
2. represent the Commission to the City Council and other official bodies
3. serve as ex-officio on all committees
4. appoint chairpersons of all committees for his/her term of office
5. represent the Commission in the community

B. The Vice-Chairperson shall:

1. serve in the absence of the chairperson and assume additional responsibilities delegated by the chairperson

C. The Secretary shall:

1. serve in the absence of the chairperson and assume additional responsibilities as delegated by the chairperson
2. ensure that the Commission members and liaisons are notified of all meetings
3. take and maintain minutes and records of all Commission meetings. In the secretary's absence, the taking and preparing of minutes will be conducted by the Treasurer and forwarded to the chairperson for distribution to Commission members and City staff liaisons.
4. distribute minutes to Commission members and City staff liaisons
5. determine that a quorum is present
6. maintain the file of correspondence
7. keep a current roster of Commission members
8. obtain needed signatures

D. The Treasurer shall:

1. be responsible for keeping an accurate account of receipts and disbursements.
2. be responsible for making monthly reports of the status of the financial situation of and amounts in the Public Art Trust Fund held by and in the name of the City of Southfield.
3. be responsible for preparing a proposed annual budget for the Commission in cooperation with the City Planner and City Administrator.

Article VI: Meetings and Quorum

- A. Commission meetings shall take place on not less frequently than a monthly basis. In conflicting situations, meetings may be changed or postponed at the call of the chairperson.

- B. Special meetings may be called by the chairperson or shall be called upon the written request of a majority of Commission members. Notification of regular meetings shall be provided at least seven days in advance, and special meeting notification shall be provided at least 18 hours in advance. Notice of Commission meetings shall be given in accordance with the Open Meetings Act (P.A. 267 of 1976) and all meetings shall be held in compliance therewith.
- C. Fifty percent (50%) of Commission members, appointed and serving, shall constitute a quorum for the transaction of business.
- D. If, at the call of a meeting, a quorum is not present, the chairperson may proceed with the meeting, however, no action of said meeting becomes official until voted upon at a meeting where a quorum is present.
- E. All Commission meetings shall be governed by Roberts Rules of Order where not in conflict with these bylaws.

Article VII: Committees

- A. The Chairperson may establish standing committees and, whenever necessary or appropriate, create special committees. Standing committees shall be named in amendments to the by-laws and shall function from year to year until dissolved by a vote of the commission, provided a quorum is present. Special committees may be established to perform special projects or functions, and shall be dissolved upon completion of the special projects or functions for which they were created.
- B. All committee chairpersons and committee members shall be appointed by the chairperson of the Commission.
- C. Committee chairpersons must be members of the Commission. Members of the standing committees and/or special committees are not required to be members of the Commission.
- D. The Committee chairpersons shall furnish a written annual report to the Commission chairperson to be submitted during the regularly scheduled monthly meeting in January each year. A summary of these reports will be presented by the Chairperson to the membership at the next regularly scheduled monthly meeting.

Article VIII: Financial Procedures:

- A. The Commission's financial procedures shall be undertaken in accordance with the rules, regulations, and procedures established and followed by the City of Southfield.

Article IX: Publicity and Marketing:

- A. The Commission's publicity and marketing efforts shall be undertaken in conjunction with the practices and policies established and followed by the City of Southfield.

Article X: Amendments:

These bylaws may be amended by a two-thirds vote of those present at a regular meeting, provided that a quorum is present, and that the proposed changes have been submitted to the membership in writing at least two weeks in advance of the meeting.

ORDINANCE NO. 1657

AN ORDINANCE TO AMEND THE CODE OF THE CITY OF SOUTHFIELD BY ADDING SECTION 5.22-5 TO CHAPTER 45, ZONING, ARTICLE 4, GENERAL PROVISIONS, OF TITLE V, ZONING AND PLANNING OF SAID CODE.

THE CITY OF SOUTHFIELD ORDAINS:

ARTICLE 4 GENERAL PROVISIONS

THE CODE OF THE CITY OF SOUTHFIELD IS HEREBY AMENDED BY ADDING NEW SECTION 5.22-5 PUBLIC ART REQUIREMENT TO TITLE V, ZONING AND PLANNING, OF CHAPTER 45, ZONING ARTICLE 4 GENERAL PROVISIONS, WHICH SHALL READ AS FOLLOWS:

SECTION 1.

5.22-5 Public Art Requirement

Unless the project is exempt from this requirement pursuant to Sec. 5.22-5 (4) of this section, the site shall be designed and developed to contain public art as defined by Sec 1.180(a) of Chapter 4, Article VI, Title I of the City Code and in accordance with the following:

- (1) A budget for the public art required by this section shall be established based on the allocation of 0.5% of the total project cost up to \$12,500 for projects between \$1.0 million and \$2.5 million dollars, and 1% of the total project cost up to \$25,000 for projects in excess of \$2.5 million dollars, to be committed to the procurement and display of public art on the site.
- (2) The public art shall be a work of art as defined by Sec 1.180 of Chapter 4, Article VI, Title I of the City Code and shall be approved by the City's Public Art Commission in accordance with the definition of public art and the standards set forth in Sec 1.180(a) of Chapter 4, Article VI, Title I of the City Code and the City Council prior to site plan approval. The approval by the Public Art Commission and City Council shall not be unreasonably withheld.
- (3) The total allocation as established pursuant to Sec. 5.22-5 (1) shall be held in the name of the City to be held in the Public Art Fund trust account pursuant to Sec 1.180(b)(7) of Chapter 4, Article VI, Title I. Maintenance shall be the responsibility of the owner of the property in addition to the allocation established by Sec. 5.22-5 (1). Failure to install the public art as required by this subparagraph and in accordance with the approved site plan shall result in denial of a certificate of occupancy. Failure to properly maintain the public art in accordance with the approved site plan is a violation of the zoning code and subject to enforcement pursuant to the provisions of Sec. 5.206 of this Chapter. Prior to any enforcement action a violation notice shall be sent to the responsible party. A failure to cure the violation within 30 days shall constitute a violation and each day thereafter that the violation remains uncured shall constitute a separate offense.

- (4) The following projects are exempt from the public art requirements of this section:
 - (a) Projects where the application of this requirement would constitute a governmental taking or otherwise be contrary to law, as determined by the Director of Planning, under the particular facts and circumstances of that case as explained in detail by the applicant. The Director of Planning may request additional information from the applicant if insufficient information is provided with the site plan to make a determination. The applicant has all appeal rights as would otherwise be applicable to any determination by the Director of Planning.
 - (b) Projects where the total project cost is less than \$1 million dollars.
 - (c) Residential projects containing fewer than 4 residential units.
 - (d) Projects where, upon issuance of the building permit, the applicant donates an amount equivalent to the amount required in Sec. 5.22-5 (1) of this paragraph to the public art fund as established pursuant to Sec 1.180(b)(7) of Chapter 4, Article VI, Title I of the City Code or donates a "work of art" to the fund that is approved by the Public Art Commission and is of equal value to the requirements established in Sec. 5.22-5 (1) of this Section.
 - (e) Projects that are renovations of existing buildings where the total project cost is less than \$1.0 million.
- (5) A developer may choose to partially exempt a project from the public art requirement of this section to the extent the developer chooses to donate funds or works of art less than the amount established pursuant to Sec. 5.22-5 (1) of this Section in which case the budget required for public art shall be reduced by a corresponding amount.

SECTION 2.

Should any section, clause, or paragraph of this Ordinance be declared by a court of competent jurisdiction to be invalid, the same will not affect the validity of the Ordinance as a whole or part thereof other than the part declared to be invalid.

SECTION 3.

All ordinances or part of ordinances in conflict herewith are hereby repealed only to the extent necessary to give this Ordinance full force and effect.

Ordinance No. 1657
Page 3

SECTION 4.

This ordinance shall take effect after publication.

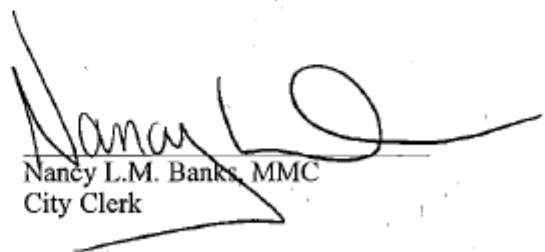
KENSON J. SIVER, MAYOR

NANCY L.M. BANKS, CITY CLERK

Introduced: 02/29/2016
Enacted: 03/21/2016
Published: 04/03/2016

I, Nancy L. M. Banks, the duly elected and qualified City Clerk of the City of Southfield, County of Oakland, State of Michigan, do hereby certify that the foregoing Ordinance No. 1657 is a true and correct copy as adopted by the Southfield City Council at their Regular Meeting held on February 29, 2016 in the Council Chambers of the Municipal Building, 26000 Evergreen Road, Southfield, Michigan.

Dated: August 15, 2016



Nancy L.M. Banks, MMC
City Clerk

Notes

NOTES