

# MAYOR'S MEMO

*News of Interest to Southfield Residents from Mayor Ken Siver*

## City's June Calendar full of activities for you, family, friends

City of Southfield has a full line-up of activities for the month of June. Come out and join us! Here is what's on tap:

- 01 Mayor Council Joint Resolution – June 2022 Men's Health Month**  
Schedule a checkup
- 06 Senior Adult Round Table with State Senator Jeremy Moss**  
2-4pm – Southfield Pavilion – Seminar on legal rights, services, avoiding scams, etc.
- 09 Eat to the Beat – Lunchtime Concert & Food Trucks**  
Featuring the Skye Island Band  
11am-2pm – Municipal Campus Front Lawn
- 11 Annual Crohn's & Colitis Walk**  
10am to Noon – Starts at Municipal Campus Front Lawn
- 11 Prostate Boxer Foundation Information Fair**  
2-7pm -- Municipal Campus Front Lawn
- 11 Fishing Fun – Parks & Rec Fishing Derby**  
10am to noon – Crafts & Activities  
Free Fishing until dusk -- No fishing license required  
Carpenter Lake Nature Preserve
- 13 City Council 2022-23 Budget Adoption Public Hearing**  
5:30pm – City Council Chambers
- 13 Mayor Council Joint Resolution – Juneteenth Week Celebrations**  
6pm – City Council Chambers
- 15-22 Juneteenth Week in the City of Southfield**  
Art of John Osler capturing African American life  
8am-5pm – City Hall Lobby
- 15 Juneteenth Flag Raising Ceremony**  
5:30pm – Front of City Hall
- 15 Jazz & Blues at the Library -- Juneteenth Edition**  
6:30-8:30pm – Library Patio – Featuring various genres of African American music  
Library Bookshelf offering gently used books

# JUNETEENTH



*Juneteenth Jazz & Blues at the Library 2021. This year the event will be held on June 15th.*

- for sale & vendors from local African American-owned businesses
- 16 A Timeline in Dance – Featuring Body Rhythm Dance Theatre Youth Troupe**  
5:30-6:15pm -- Library
- 16 Juneteenth Book Displays – Featuring Jean Alicia Elster**  
During Library hours – Library
- 16 Juneteenth Luncheon -- \$15**  
Noon to 2pm – Room 115 Park & Recreation
- 18 Mayor's Juneteenth Walk**  
10am to Noon – Starts at Municipal Campus Front Lawn
- 18 Juneteenth Children's Story Time – Featuring Miss Shari**  
Noon – Children's Department of the Library
- 18 Juneteenth Family Fun Day – Featuring Variety of Programs & Activities**  
1-9pm – Parks & Recreation & Front Lawn

*Continued on Page 2*

## City June Calendar

*Continued from Page 1*

- 18** 1pm – Juneteenth Re-enactors & Presenters  
Sponsored by the Southfield Historical Society  
2pm – Juneteenth Dancers  
4-6pm -- Drum Group  
7-9pm – Larry Lee & Back in the Day Band  
Concert
- 19** **Juneteenth Day – AKA Pi Tau Omega Chapter's Virtual Juneteenth Program**  
2pm – Access to be announced  
[www.akasouthfield.org](http://www.akasouthfield.org)
- 20** **Juneteenth Holiday Observed**  
City Offices & Library Closed
- 21** **Recreation on the Move**  
Weather permitting -- Activities, games and fund for children 5-13 years of age  
4-6pm -- Inglenook Park
- 22** **Juneteenth Pitch Event (Small Business Shark Tank)**  
3:30-6:30pm – Centrepolis Business Accelerator on LTU Campus  
Event participant Pre-Registration required -- Observers welcome
- 24** **Summer in the City Concert featuring The Circle of Sound Band**  
7-9pm – Municipal Campus Front Lawn
- 26** **Annual Southfield Parks & Garden Club Garden Walk**  
2-5pm – Registration & Shuttle Bus at Leonhard School Driveway
- 27** **Children's Summer Day Camps Begin**  
9am – Parks & Recreation  
Fees and preregistration required
- 21** **Recreation on the Move**  
Weather permitting -- Activities, games and fund for children 5-13 years of age  
4-6pm -- Evergreen Hills Golf Course
- 29** **Park-It – Fun Night & Movie *Encanto***  
6:30-9:30pm – Municipal Campus Front Lawn  
Movie begins at 8:20pm



She Never Stopped Dancing

### The Art of John Osler

continues on display in the City Hall Lobby from 8am to 5pm on weekdays through July 1.

The exhibit features 27 of Osler's original oil paintings and prints.



**Backyard grandeur in Cranbrook Neighborhood on 2021 Southfield Parks & Garden Club Garden Walk.** This year's event on Sunday, June 26th (2-5pm) will feature homes in the Beacon Square Neighborhood. Tickets are \$10 and available from the Mayor's Office. Walk registration and shuttle bus starts at the Leonhard School Driveway on Winchester Street.



### Kimkie Horne Jazz Festival returns Aug. 12-13

Southfield's signature event of the summer, the Kimkie Horne Jazz Festival, returns to the front lawn of the Southfield Municipal complex on Friday, August 12 from 6-10:15pm and on Saturday, August 13 from 3-10:15pm.

The event is free but parking on city property is \$10 per car. The complete lineup of acts is yet to be announced. The event will also feature a variety of food trucks and vendors on both days.



## DTE making good on promises to upgrade equipment, trim trees along power lines in Southfield

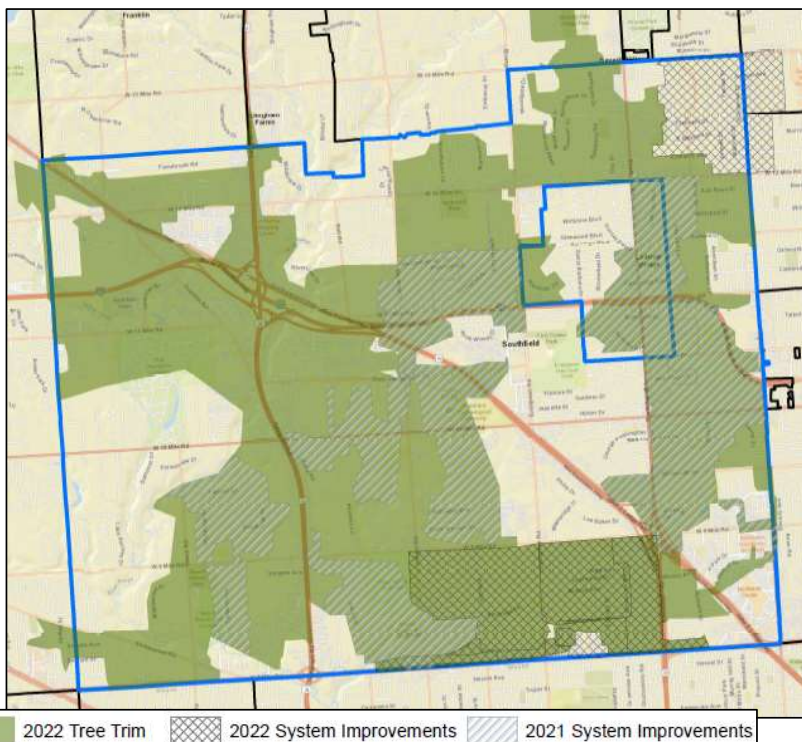
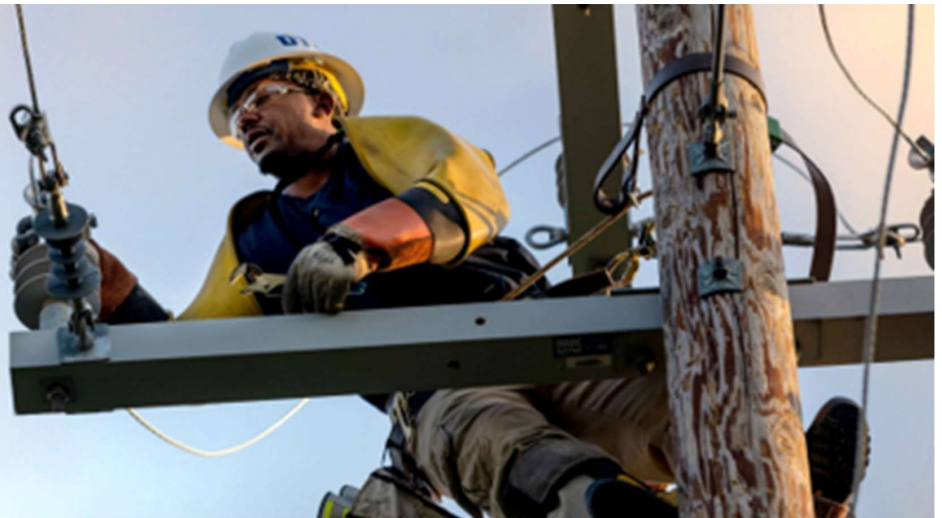
The summer of 2021 with its series of powerful storms was hard on Southfield residents and businesses as electric power was knocked out numerous times.

Starting last August, Mayor Kenson Siver held four meetings with DTE officials, including a neighborhood walk with DTE CEO Jerry Norcia in October. The Mayor stressed that tree trimming was not thorough and/or frequent enough. The result was promises by

the utility to upgrade equipment and conduct a much greater level of tree trimming in the city.

Work has been underway on both fronts over the past five months. While there is no guarantee that power outages won't occur this summer, the likelihood has been reduced. However, DTE is focusing its efforts on the area that were hardest hit last year. The company's report follows.

Working to  
Improve  
Reliability in:  
**Southfield**

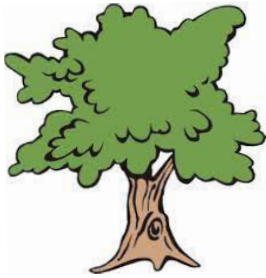


**From 2021-2022,  
we will have  
completed system  
upgrades on 50 of  
54\* overhead  
circuits in  
Southfield.**

*Continued on Page 4*

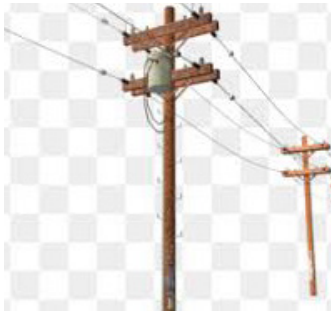
## DTE continues efforts to improve service in Southfield

*Continued from Page 3*



### Tree Trimming Update

- Tree trimming in Southfield is scheduled for 2022, in par with the tree trim maintenance cycle.
- Trimmed 73 miles of trees along power lines in Southfield so far in 2022. The goal is to trim 169 miles by 12/31/2022.
- Two-thirds of the time DTE Energy customers spend without power is due to trees.



### System Improvement Update

- DTE recently completed infrastructure upgrades on twelve circuits in 2021 (affecting 8,601 customers)
- More system improvement work has started and will continue in 2022 on six circuits (affecting 4,374 customers)
- Upgrades included installing new poles and crossarms, placing animal guards on equipment and installing specialized equipment that can automatically restore service or isolate damage, leading to faster restoration.



### Connecting with our Customers

- We are leveraging several of our social media channels including our Empowering Michigan blog, Facebook, and Nextdoor to inform customers about the work happening and planned in their neighborhood. Find more information on [empoweringmichigan.com](https://empoweringmichigan.com) or on Facebook @dteenergy.

- On average, DTE customers have seen reliability improve by 67% in areas where enhanced tree-trimming has been complete.
- In 2020, DTE invested nearly \$1 billion on equipment upgrades in our service territory, resulting in a 25% increase in reliability over 2019. When combined with tree trimming, customers experienced a 50-70% improvement in reliability.

### MAYOR'S MEMO

The Mayor's Memo is an occasional newsletter produced by Mayor Ken Siver and not done at city expense. The Memo provides city news & updates to residents. To subscribe, send an email to [bastrop@cityof-southfield.com](mailto:bastrop@cityof-southfield.com). Feel free to pass this newsletter on to others.

### Left with logs from DTE tree trimming?

Contractors working to trim limbs from power lines will remove branches that are 4" in diameter or less. Occasionally, logs are left behind that are too large for chipping machinery. These logs are the responsibility of homeowners to remove.

City Department of Public Works will not take tree limbs and logs over 4" as they are too large for city chipping equipment.

Handicapped and elderly residents may make application to DTE to have logs removed.