

CITY OF SOUTHFIELD

2022 STATE OF THE CITY

Kenson J. Siver
Mayor

Frederick Zorn, City Administrator
John Michrina, Deputy City Administrator

City Council

Linnie Taylor, *President*
Michael Mandelbaum, *Pro Tem*
Nancy M. L. Banks
Daniel Brightwell
Lloyd Crews
Myron Frasier
Jason Hoskins

Sherikia Hawkins, *City Clerk*
Irv Lowenberg, *Treasurer*

TOPICS

- City Progress
 - Police
 - Parks & Rec
 - Roads
 - Wildlife
- Placemaking & Public Art
- New Housing
- Business Developments
- Northland Revitalization
- Coming Attractions



CITY PROGRESS FOR 2022

Initiatives from Police, Parks & Recreation & Engineering

9-1-1 EMERGENCY TEXTING



Texting when unable to make voice call to 9-1-1

- **The first message should be brief; contain emergency location; & type of help needed**
- **Be prepared to answer questions & follow instructions**
- **Text in simple words – do not use abbreviations**
- **Keep text messages brief and concise**
- **As with all text messages, 9-1-1 messages can take longer to receive, can get out of order or may not be received**
- **Text-to-9-1-1 is not available if you are roaming**
- **A text or data plan is required to place a text-to-9-1-1**
- **If texting to 9-1-1 is not available in your area, or is temporarily unavailable, you will receive a message indicating that texting 9-1-1 is not available and to contact 9-1-1 by other means**
- **Photos and videos cannot be sent to 9-1-1**
- **Text-to-9-1-1 cannot include more than one person**
- **Do not send your emergency text to anyone other than 9-1-1**
- **Do not text and drive!**

DOMESTIC VIOLENCE AWARENESS



southfield domestic violence group

Domestic Violence Awareness Committee Presents ...

Why Won't They Leave, a dramatization

For ages 17 & older

Friday, April 22, 2022 at 6pm & 7:30pm

Saturday, April 23, 2022 at 4pm & 6pm

Fosters Day Care ~ 25536 Lahser Road, Southfield

SAVE THE DATE

3rd Annual Walk to Bring Awareness to Domestic Violence

Southfield Civic Center Front Lawn

Sunday, October 2, 2022 @ 11am

PARKS & RECREATION

Play Equipment Replacement

Deck Park

(I-696 & Greenfield)

Civic Center

(behind Ice Arena)

Bedford Woods Park

(Lathrup & Webster streets)

Bedford Woods Park Concept

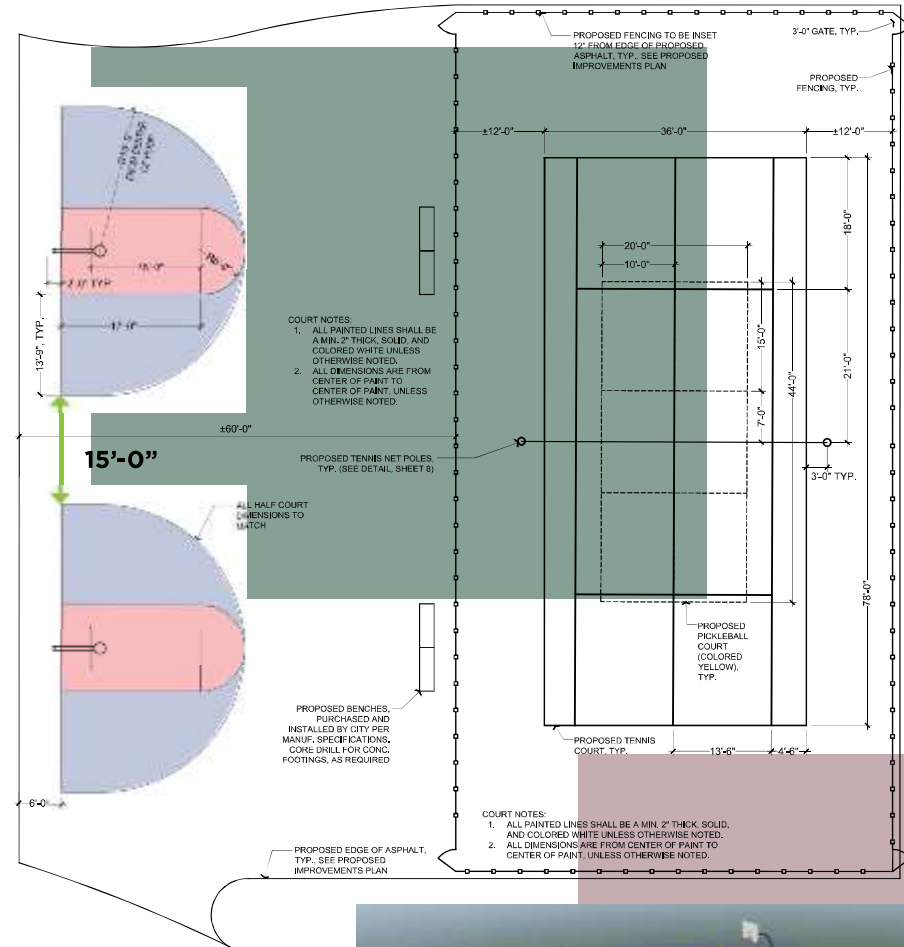


PARKS & RECREATION

Simms Park Improvements

(Pierce & Glasgow Streets)

Walking Trail
1/2 Basketball Courts
Pickleball Courts



ENGINEERING

- ❑ Phase II of the reconstruction of Beech Road between Eight Mile and Ten Mile roads & rebuilding the bridge over the Rouge River below Ten Mile
- ❑ Phase II of Section 35 street repaving
- ❑ Reconstruction of Shiawassee Road from Eight Mile to Inkster & construction of a walking path on the same
- ❑ Continuation of replacement of sections of streets in Mt. Vernon Place Neighborhood
- ❑ Replacement of degraded sections of streets in Tanglewood Neighborhood from Fairfax to Pierce
- ❑ Resurfacing of Berg Road from Eight Mile to Simmons
- ❑ Resurfacing of Eight Mile between Southfield Freeway & Greenfield Road
- ❑ Repair of the Eight Mile & Telegraph Road interchange



DEER & WILDLIFE

- ❑ City Council adopts ordinance prohibiting feeding deer. Feeding deer only increases the overpopulation of the herd.
- ❑ Southfield has joined other communities in requesting a regional solution organized by Oakland County
- ❑ Southfield Wildlife Commission plans education initiatives during the year ahead.
- ❑ Mayor requests advisory resolution on culling the deer herd on the November ballot.
- ❑ No solution in sight on growing presence of coyotes.



PLACEMAKING & PUBLIC ART

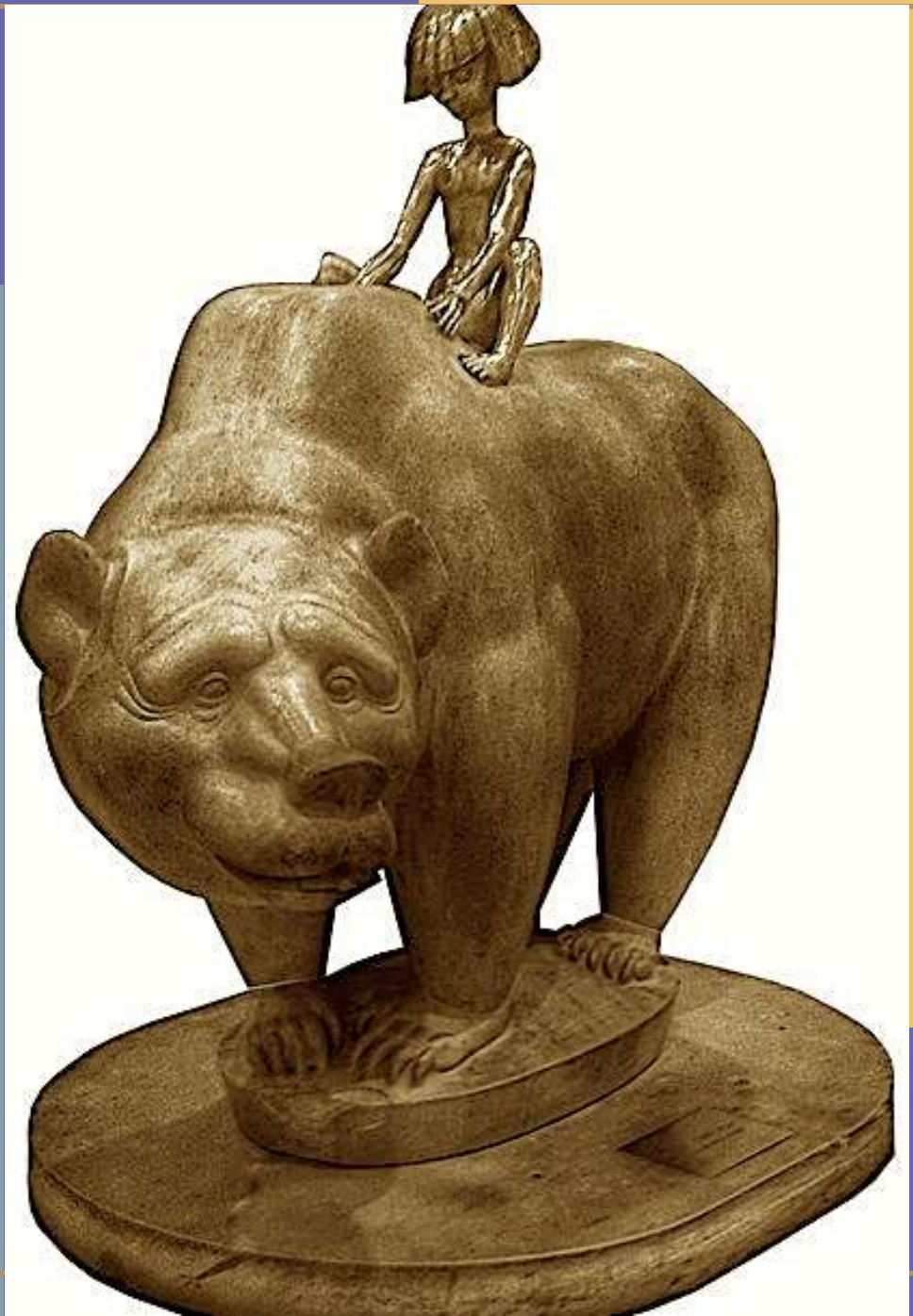
Re-Creating our City Around Places

Our objective is to strengthen the connection between people and the places they share. Placemaking refers to a collaborative process by which we can shape our public realm in order to maximize shared value.

PUBLIC ART & PLACEMAKING

For the past decade Southfield has been working to transform itself to a more pedestrian and bicycle friendly city.

Originally designed around the automobile and moving vehicular traffic quickly, we are now concentrating on creating unique and walkable spaces ... softening the auto-dominated design.





Benches, planters, trash receptacles, bike lanes, pathways, wider sidewalks, wayfinding signage, urban trails, public art, etc. make for a more friendly environment.



WALKABILITY



Miles of urban trails have been added.

WALKABILITY



SOUTHFIELD CITY CENTRE TRAIL MAP

4th Edition | ©2018/2020



MAP LEGEND

- H** HOTELS
 - H-1: DETROIT MARRIOTT-SOUTHFIELD
 - H-2: COURTYARD BY MARRIOTT DETROIT SOUTHFIELD
 - H-3: COMFORT SUITES SOUTHFIELD
 - H-4: HOLIDAY INN EXPRESS & SUITES - SOUTHFIELD
 - H-5: WESTIN SOUTHFIELD DETROIT
 - H-6: HAWTHORN SUITES BY WYNDHAM DETROIT SOUTHFIELD
 - H-7: CANDLEWOOD SUITES
 - H-8: FUTURE HOME OF THE STAYBROGE SUITES AND HAMPTON INN
- S** SHOPPING CENTERS
 - S-1: SHOPPES AT PARK PLACE
 - S-2: CITY CENTRE PLAZA
 - S-3: CITY CENTRE II
 - S-4: EVERGREEN ATRIUM MARKETPLACE
 - S-5: TGI FRIDAYS
 - S-6: TRAVELERS TERRACE RETAIL CENTER
 - S-7: KERBY'S HONEY ISLAND
 - S-8: WENDY'S
- HS** HISTORIC SITES
 - HS-1: SOUTHFIELD REFORMED PRESBYTERIAN CHURCH
 - HS-2: MARY THOMPSON FARM
 - HS-3: SOUTHFIELD CITY HALL
 - HS-5: SOUTHFIELD TOWNSHIP CEMETERY
 - HS-6: BURGH HISTORICAL PARK
 - HS-7: CODE HOUSE
- A** ART
 - A-1: BOY AND BEAR
 - A-2: PROPHET
 - A-3: PEACOCK
 - A-4: PIONEER FAMILY II
 - A-5: DIVERSITY
 - A-6: GRATITUDE
 - A-7: MOBY DICK
 - A-8: RED-POLE PARK
 - A-9: YIN YANG
 - A-10: CITY OF SOUTHFIELD
 - A-11: SOUTHFIELD PEACE POLES



- T** Trail Head or End Point
- P** Parking
- ♿** Restrooms
- R** Bike Repair Station
- Completed Shared - Use Path
- Proposed Shared - Use Path
- Completed Bike Lane
- City Centre District Boundary

CITY CENTRE TRAIL

- Completed Trail Length: 7.75 Miles
- Trail Surface: Asphalt and Concrete

WALKABILITY

And creating safe places to travel on foot



Replacing "goat paths" with sidewalks

New pathway from Lahser to Civic Center Drive

MORE THAN PATHWAYS
CREATING INTERESTING
SPACES ... DESTINATIONS



PUBLIC ART & PLACEMAKING

The Southfield Public Arts Commission, the City Centre Advisory Board, the Friends of Southfield Public Arts & the City Planner's and Mayor's offices have taken the lead on funding for the restoration, purchase and placement of Public Art.



Restored
City of
Southfield
sculpture



**23
Public Art
Installations
in the last
six years**





**23
Public Art
Installations in the
last six years**





**23
Public Art
Installations in the
last six years**



PUBLIC ART

Plus, a dozen or more private art installations by local businesses under the One Percent Art Ordinance.



Above: Mural at Glassman Auto Dealership
Right: New Seoul Plaza





R E

ld
t all™

gical

COMING SOON

Southfield City Centre Trail Mural by Dr. Hubert Massey



PUBLIC ART & PLACEMAKING



Hubert Massey installation on the Northwestern Highway at Lawrence Tech

HOUSING

Renewing & Creating Housing for Today's Needs

Southfield continues its efforts to renew its existing housing stock. Partnerships with Habitat for Humanity, Oakland Rebuilding Together & the Southfield Non-Profit Housing Corporation aid that effort.

Simultaneously, new housing is in the works for a variety of needs.

Three Housing Needs Identified

- ❖ **Workforce / Affordable**
- ❖ **Subsidized Senior**
- ❖ **Market Rate Housing**

For young professionals & Empty Nesters looking to downsize and remain in the city





Affordable Housing

Due to the high cost of new construction, City Council approved rezoning for single family residential lots for construction of duplexes.

The duplex above has been approved for Westland Street as affordable housing. This home will be constructed by Habitat for Humanity Oakland County.

ADAPTIVE REUSE HOUSING

**Former Hawthorn Suites
Extended Stay Hotel to be
reborn as The Alcove,
affordable rental housing.**

144 units



John Grace Arms

Subsidized Senior Housing proposed for a conversion of the former John Grace Elementary School. Rezoning to Residential Urban Development District.

Partnership with Southfield Non-Profit Housing Corporation and Lockwood Company

60 Units planned
Full amenities

Application for MSHDA funding pending



Indian Street Elevation



Rear Elevation

McKinley Place

Market rate condominiums to begin construction this year with the conversion of the former McKinley School and construction of 11, 2-family Tudor Town Homes

Partnership with Southfield Non-Profit Housing Corporation and Contour Companies

40 Units planned
950 to 2,500 sq. ft.
2-car garages included



NEW CONSTRUCTION MARKET RATE CONDOS

Deer Brook development will provide 39 new market rate condos – many with first floor masters

Many long-time Southfield residents are looking to downsize and remain in the city the love.

Demand exists for new market rate housing.



Development at Nine Mile &
Lahser roads

NEW CONSTRUCTION MARKET RATE

**Mapletree Townhome
development will provide
21 new market rate units.**

**Completion Summer of
2022**



Franklin Road

NEW CONSTRUCTION MARKET RATE APARTMENTS

The obsolete Civic Center Plaza office building was converted to loft apartments in 2013.

Occupancy has remained very high. Approximately 72 new units are planned.

Demand exists for market rate new housing.



Expansion of the successful Arbor Lofts apartment complex at Central Park Boulevard & Civic Center Drive.

NEW CONSTRUCTION MARKET RATE APARTMENTS

MIDDLEPOINT DEVELOPMENT

The long vacant 8.15 acres across from city hall will become a mixed-use development with apartments, retail, dining and green space ... and hopefully a gourmet market.



NEW
CONSTRUCTION
APARTMENTS
& RETAIL

MIDDLEPOINT DEVELOPMENT

The long vacant 8.15 acres across from city hall will become a mixed-use development with apartments, retail, dining and green space ... and hopefully a gourmet market.



NEW CONSTRUCTION SINGLE FAMILY HOMES

**Single Family home
construction continues across
the city, filling in vacant lots
in neighborhoods.**



TOTAL REHABILITATION OF EXISTING MULTI-FAMILY UNITS

Many of the city's apartment complexes are aging and in need of extensive rehabilitation.

The Adora (formerly the Atrium), with 96 units, is in the process of being completely rebuilt at Nine Mile & Providence Drive.



TOTAL REHABILITATION OF EXISTING MULTI-FAMILY UNITS

Many of the city's apartment complexes are aging and in need of extensive rehabilitation.

The Park at Trowbridge, with 308 units, is undergoing a complete remodeling and the installation of new mechanical systems.



The Park at Trowbridge

BUSINESS DEVELOPMENTS

Re-Imaging & Adapting Space for New Needs, Uses

Business and retail models are changing. The impact of the COVID pandemic on office and commercial spaces is yet to be fully understood. Adaptive re-use is key to maintaining a vibrant business community in Southfield.

ACCELERATOR EVOLUTION LAB

IMPACT REPORT

150 Products Commercialized
\$24 Million Value of Contracts
\$80 Million Investment Raised
by Clients
375 Companies Served
325 Contracts to Michigan
Suppliers
360 Jobs Created

**Evolution Lab created to
provide resources training and
mentoring to underserved
Southfield entrepreneurs.**



Southfield Business & Economic Development Strategies

Business Attraction
Business Diversification
Public Private Partnerships

Business Retention
Skilled Workforce
Talent Retention

NEW DEVELOPMENTS

Southfield's first Chick-fil-A has been approved at Tel-Twelve Center.



Verizon Wireless is constructing a data center on Northwestern Highway below Ten Mile.



NEW DEVELOPMENTS

After a delay caused by the pandemic, construction has resumed on two new hotels on Northwestern Highway north of Civic Center Drive.



Staybridge & Hampton Inn



SITE ADAPTIVE REUSE

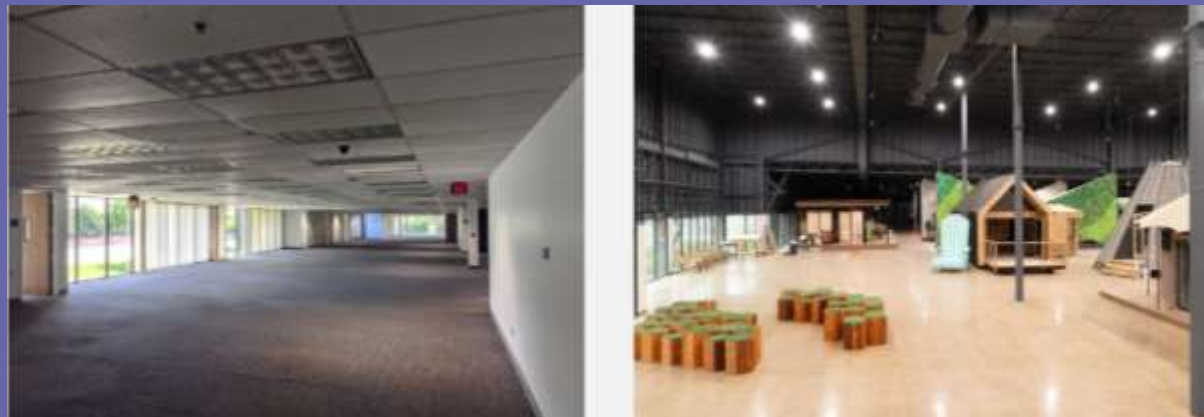
**29200 Southfield Road
obsolete office building to
be replaced with Southfield
Storage & Retail**



Note public art for top of building.
Model of construction crew on a lunch break
while working on the Empire State Building
in 1932.

ADAPTIVE REUSE

**Michigan National Bank
Regional Offices reborn as
Sun Communities Research
Center & product showroom**



ADAPTIVE REUSE

**Federal Mogul World
Headquarters reborn as
Marelli -- auto parts supplier
North American offices**



ADAPTIVE REUSE

**Sunrise Donut Shop
reborn as
Lume. Medical Marijuana
Provisioning Center**



ADAPTIVE REUSE

**Victor Center Office Building
-- Former home of Plante
Moran -- to be reborn as
Storage and Retail Center**



27400 NORTHWESTERN HIGHWAY

ADAPTIVE REUSE

First Federal Bank on Ten Mile & Grodan Drive has been reborn as Bell's Event Center.



ADAPTIVE REUSE

Copper Canyon Restaurant is
being reborn as
New Seoul Gourmet Market



ADAPTIVE REUSE

**Northland Center
to be reborn as
Northland City Center &
Hudson City Market**



ADAPTIVE REUSE

Phase I includes demolition of the JC Penney's, an auto service center, former police mini-station & the newer additions to Northland Center.

Hudsons & original mall to be converted to housing, retail & commercial uses.

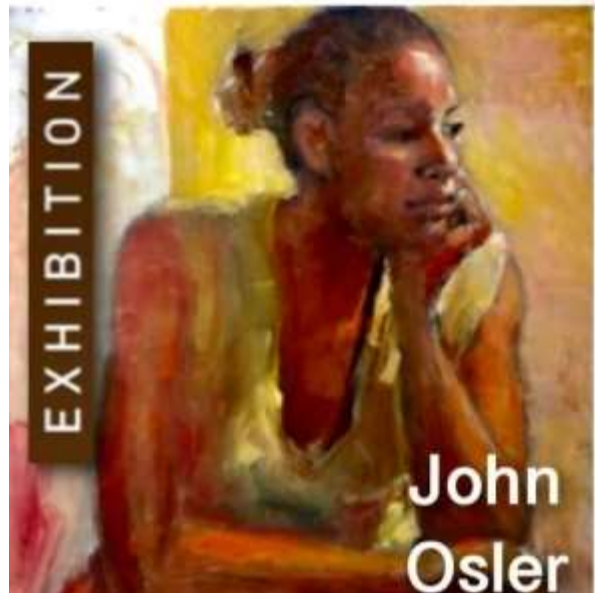


2022 COMING ATTRACTIONS

You are Invited to Attend/Participate

ART SHOW - JOHN OSLER

**Paintings by John Osler
City Hall Lobby
February 25 ~ June 30th**



APRIL NATIONAL HUMOR MONTH FOR SENIORS

Celebrate the Joy of Laughter

Fun Photo Friday – April 1 – 9am to 1pm

Southfield Pavilion – Selfies with fun backdrops

Funny Film Friday – April 8 -- 10am to noon

Parks & Rec Room 115 – *Bringing Down the House* -- \$2 and free popcorn

Laughter Yoga – April 27 – 3 to 4pm

Parks & Rec Room 115 – \$5



YARD WASTE COLLECTION

Spring Clean-Up Begins
on April 4th

Bundle branches butt
end toward street

Use trash cans or paper
yard waste bags, **ONLY**

NO PLASTIC



**Yard Waste Collection begins
the week of April 4**
on residents' designated
trash collection day.

LEAVES • GRASS CLIPPINGS • BRANCHES •
BRUSH REFUSE • ORGANIC MATERIAL ONLY

*For more information, contact Public Works
at (248) 796-4860 or visit www.cityofsouthfield.com.*

Southfield
the center of it all™

ARBOR DAY 2022

**For 35 Years Southfield
has been Recognized
as a "TREE CITY USA"**

Celebrate Arbor Day Tree Planting
Friday, April 29 at 11am
Front Circle of City Hall



BLESSING OF THE VETTES

Road Masters Corvette Club kicks off its season with the 2nd Annual Blessing for the Vettes in the Civic Center North Parking Lot

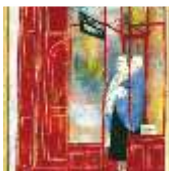
Saturday, April 30 at 10am

Contact:
rickwilliams81@gmail.com



Detroit Institute of Arts INSIDE OUT returns

7 art works to grace municipal campus from May to September



- 1 **Civic Center Park Pavilion #1**
Bookshop: Hebrew Books, Holy Day Books
Ben Shahn
- 2 **Southfield Sports Arena Ice Rink**
26000 Evergreen Rd
Hard Ball III, Robert Moskowitz
- 3 **46th District Court - Southfield**
26000 Evergreen Rd
Interior of St. Peter's, Rome
Giovanni Paolo Panini
- 4 **City of Southfield**
26000 Evergreen Rd
The Palms Parade Crowd, Russ Marshall
- 5 **City of Southfield Parks & Recreation**
26000 Evergreen Rd
Cotopaxi, Frederic Edwin Church
- 6 **Veteran's Park**
Rounded Flower Bed, Claude Monet
- 7 **Southfield Public Library**
26300 Evergreen Rd
Untitled, Edouard Duval-Carrié



Inside|Out brings reproductions of great treasures from the Detroit Institute of Arts into your community. Discover them all around town. Visit dia.org/insideout for maps of other communities and information on upcoming programs.

Use hashtags #DIAInsideOut and #InsideOutUSA to post your experience! Follow us on:

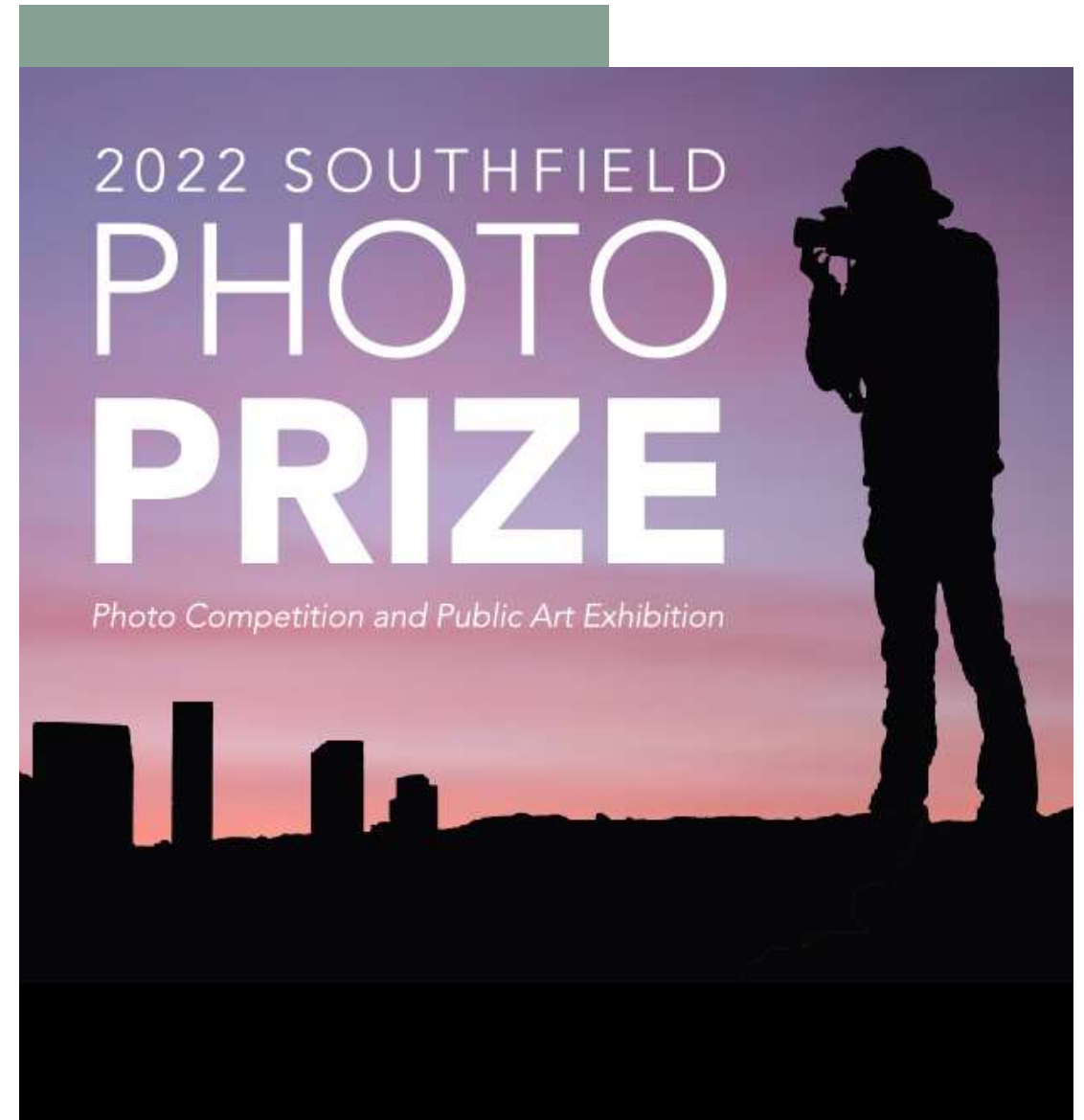


COMMUNITY RELATIONS

Entries Sought for 6th Annual Photo Prize

High resolution submissions must be e-mailed as an attachment to PhotoContest@cityofsouthfield.com by Friday, May 20, 2022.

Finalists will be posted on the City's website (www.cityofsouthfield.com) for judging by the public from June 6 – August 26, 2022. The photo that receives the most overall votes will be featured in the City's 2023 calendar with a photo credit.



COMMUNITY RELATIONS

Annual Community Pride Program Deadline for 2022 entries is June 24

Nominate

- Single Family Homes
- Condo Complexes (Small & Large)
- Apartment Complexes (Small & Large)
- Schools
- Neighborhood Entranceways
- Businesses
- Religious Institutions

Form available from City Website or Community Relations



ROUGE RIVER CLEANUP

Annual Rouge River Cleanup Returns

Saturday, May 21 ~ 8am to noon

Gather at Beech Woods Rec Center

Volunteers needed to clear logjams and debris from the river in Southfield.

Contact Brandy to volunteer 248.796.4806

**Friends of the Rouge
Native Plant & Rain Barrel Sale
Sunday, May 22 1-5pm
Beech Woods Rec Center**



CROHN'S & COLITIS WALK



**Saturday, June 11
10am
Southfield Civic
Center Front Lawn**

JUNETEENTH 2022

Plans Underway for Southfield Juneteenth Week Observances

Thursday-Wednesday, June 16-22

Historical presentations, concerts, Mayor's Juneteenth Walk, Displays and more planned for Southfield's annual Juneteenth Week.



GARDEN WALK 2022

**Southfield Parks & Garden Club
to host annual Garden Walk
On Sunday June 26 from 2-5pm**

Beacon Square Neighborhood



KIMMIE HORNE JAZZ FESTIVAL

Southfield Civic Center Front Lawn

Friday, August 12 ~ 6 to 10:30pm

Saturday, August 13 ~ 3 to 10:30pm

**Food Trucks ~ Beer & Wine Tent ~
Merchandise Vendors ~ DJ**

Parking \$10 per car



Q & A



**Meeting community needs while
adapting spaces to new uses &
keeping in tune with changing times.**

COVID-19 Memorial