

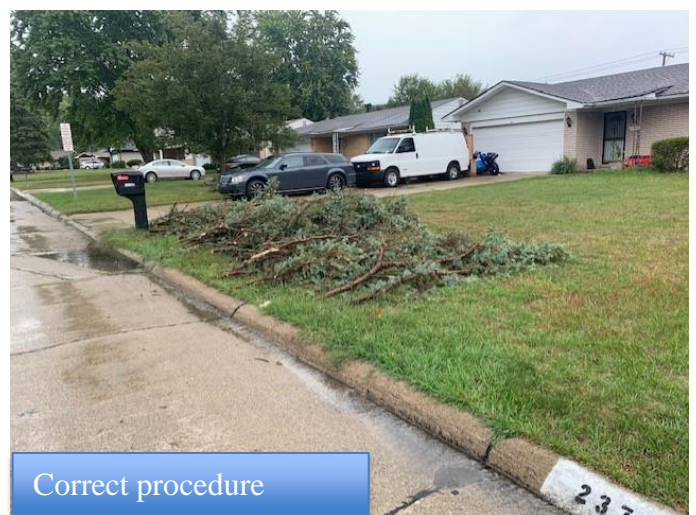
Public Works



The Do's and Don'ts of Brush Pickup

Tree trimmings must be four feet in length, maximum two inches in diameter, not to exceed 60 lbs., and tied in bundles. Brush should not have vines, glass, metal, and trash mixed in to avoid destruction of the chipper. The ends of the brush must face the street. If the guidelines are followed, limitations aren't placed on the brush pile. Yard waste must be placed in approved paper waste bags or in a rigid 32-gallon container clearly marked yard waste. Yard waste in plastic bags will not be accepted.

Residents can do their part to keep our community clean and attractive. If you see a potential code or blight issue, call the City's special hotline at (248) 796-EYES (3937) to report it.



Correct procedure



Incorrect procedure



Approved Yard Waste Bags

If you would like to give words of appreciation, highlight a D.P.W. worker, or give feedback for Public Works, please email rshelby@cityofsouthfield.com

Branch Removal Procedure

The city will remove branches two to eight inches in diameter and not exceed six to eight feet in length. They should be placed at the road with the cut ends facing the curb. There is no amount limitations designated for branches. The Residents must adhere to the specific guidelines of branch removal to ensure timely removal.

If there are any questions, feel free to contact the City of Southfield's Public Works Department at (248) 796-4860.



Have a Great Week!

MISSION STATEMENT:

It is the mission of the city of Southfield Department of Public Works to provide safe, quality, and reliable infrastructure to the residents, businesses and visitors of our community using the most affordable and efficient methods.