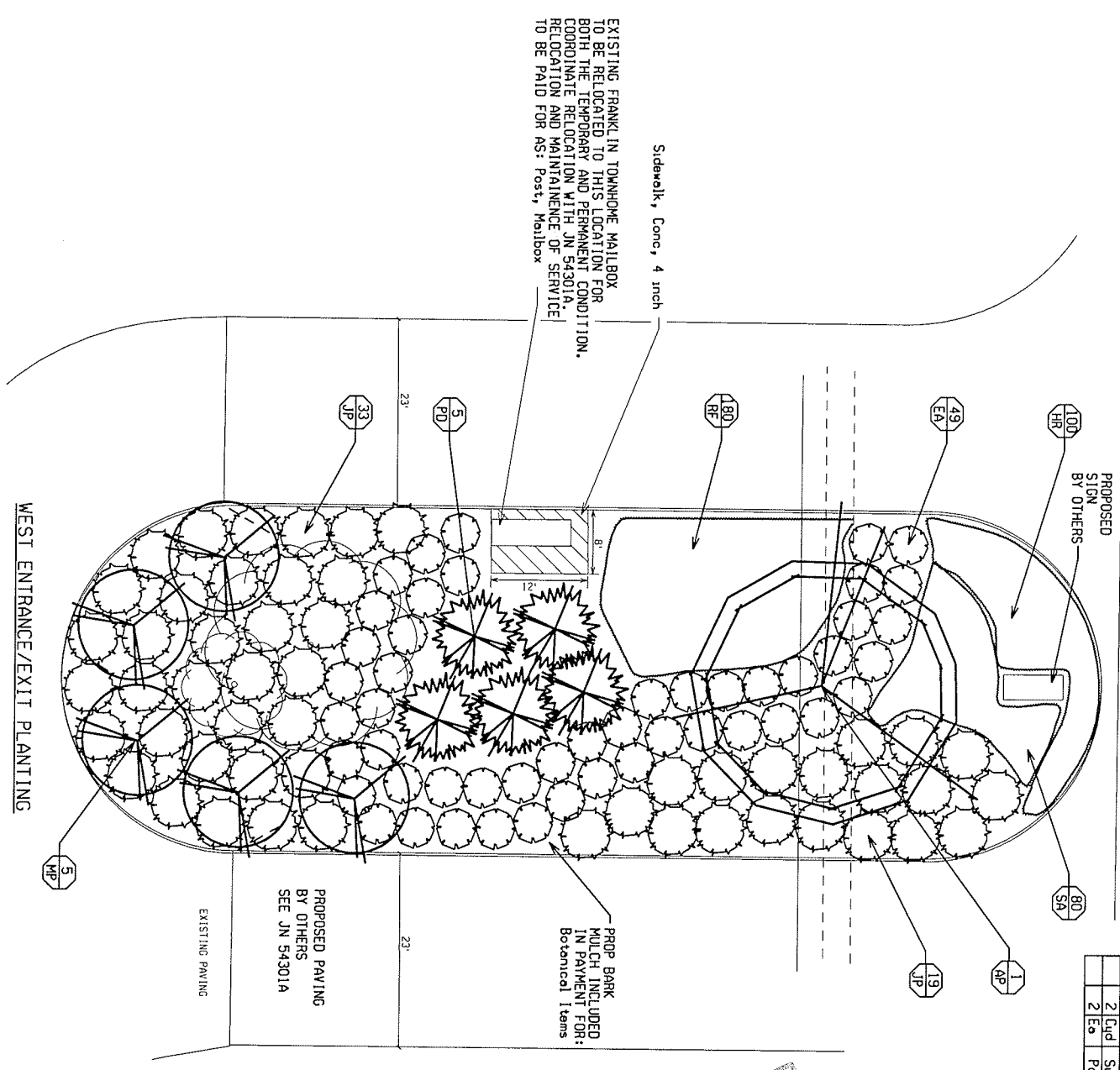
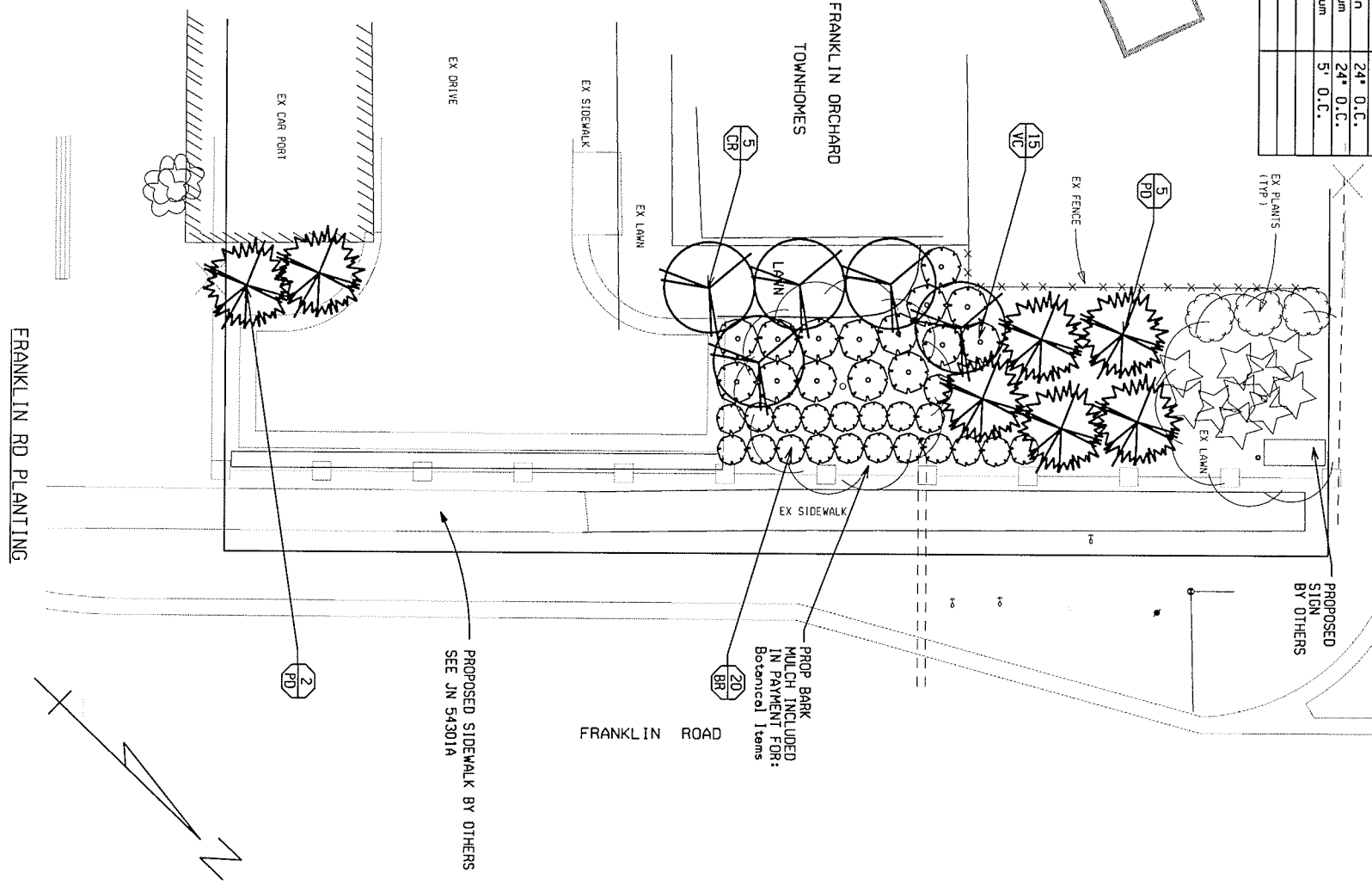


LANDSCAPING QUANTITIES - THIS SHEET
LANDSCAPE AREA - FRANKLIN ORCHARD TOWNHOUSES
SFD PART

KEY DTY/UNIT	BOTANICAL NAME/PAY ITEM	COMMON NAME	SPACING
AP 1 Ea	Acer Platanoides 'Crimson King', 2 1/2 inch	Crimson King Maple	30'-35' O.C.
BR 20 Ea	Berberis Rose Glow, 24 inch	Rose Glow Berberis	4' O.C.
CR 5 Ea	Cornus Florida 'Rubra', 1 1/2 inch	Red Dogwood	11' O.C.
EA 49 Ea	Eunonymus Alatus Compacta, 24 inch	Dwarf Burning Bush	5' O.C.
HR 100 Ea	Hemerocallis 'Raspberry Crinkles', No. 2 Container	Raspberry Daylily	18' O.C.
JP 52 Ea	Juniperus Procumbens Nana, 24 inch	Spreading Juniper	6' O.C.
MP 5 Ea	Malus 'Prarfirer', 1 1/2 inch	Prarfirer Crabapple	15' O.C.
PD 12 Ea	Picea Glauca 'Dansesta', 6 feet	Black Hills Spruce	10' O.C.
RF 180 Ea	Rudbeckia Fuldige 'Goldstrum', No. 2 Container	Black Eged Susan	24' O.C.
SA 80 Ea	Sedum Autumn Joy, No. 2 Container	Autumn Joy Sedum	24' O.C.
VC 15 Ea	Viburnum Carlesii, 24 inch	Fragrant Viburnum	5' O.C.
96 Sft	Sidewalk, Conc, 4 inch		
2 Cld	Subbase, CIP		
2 Ea	Post, Mailbox		



PRELIMINARY
DRAFT



- NOTES:
1. PLANTED TREES ARE TO BE COVERED UNDER THE 2 YEAR WATER AND CULTIVATION PERIOD PER THE MDT 2003 SPECIFICATION FOR CONSTRUCTION. TREES ARE ALSO TO BE PLANTED IN ACCORDANCE WITH BOTH 2003 SPECIFICATION AND THE INCLUDED TYPICAL PLANTING PROCEDURE.
 2. ALL EXISTING TREES TO REMAIN ARE TO BE PROTECTED WITH PROTECTIVE FENCING WITH NO MATERIAL, VEHICLES, OR ANY TYPE OF EQUIPMENT STORAGE TO BE STORED WITHIN THE DRIP LINE OF THE TREE.
 3. ALL GIVING MATERIAL AND STAKES ARE TO BE REMOVED AFTER ONE YEAR.

CH2MHILL **HRC** **MDOT**

Hidell Roth & Clark, Inc. CONSULTING ENGINEERS

Michigan Department of Transportation

FRANKLIN ORCHARD TOWNHOMES - LANDSCAPE AREA

DATE: 12/05/05 SCALE: 1" = 10' CONT. SEC.: 63081, 63082 JOB NO.: 45971A DESIGN UNIT: SWEENEY SHEET NO.: 8

DATE	REVISION	FINAL R.O.W.